

Cambodian Team

-DRIFT

-Observation

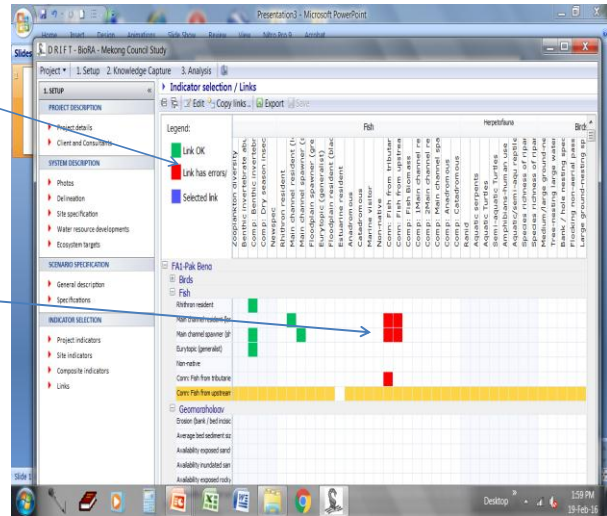
DRIFT

- The system is good enough but the system processing is slow, error appeared and only connect to MRC's database.
- Severity value should automatically link to the table of response curve.

DRIFT (1)

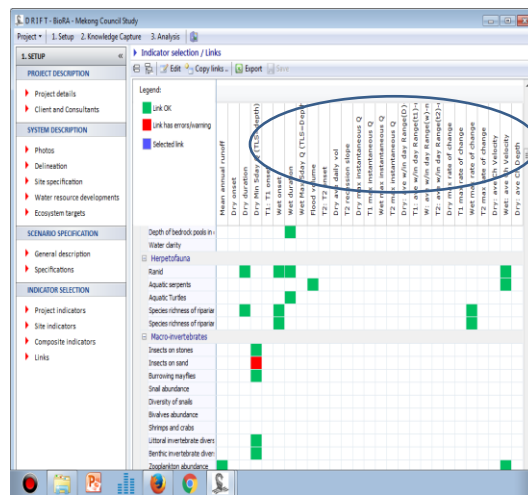
- The legend of link indicators should be changed from “error” to “delete or)”

- The color should be changed other color from red color .



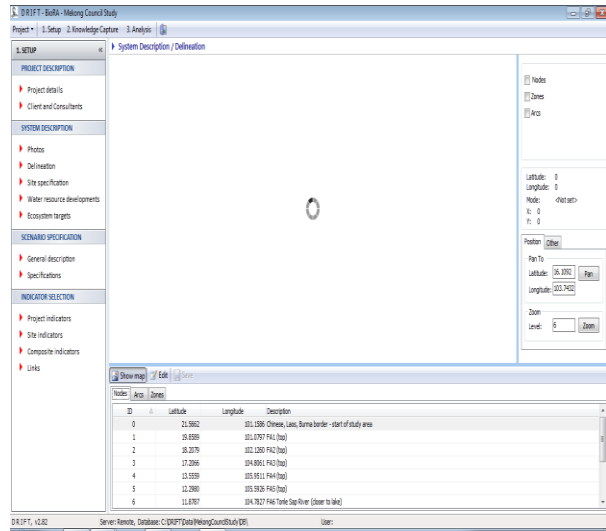
DRIFT (2)

- It is not clear on the nutrient parameters in the link is either the nutrient Compound in the water nor sediment



DRIFT (3)

- The map should be set-up in the system



Observation

- FA4, 6-8 are richness Biomass of BioRA but the sites are still not completed.
- The indicators of fish and bird should be classed by basing on FA.
- The other data of each FA is additionally used, (FA7)
- The DRIFT system is mostly based on the experts opinion (Scoring and % of change) rather than computed system.
- Field visit is still importance for checking and evaluating change.