

Cambodia • Lao PDR • Thailand • Viet Nam
For sustainable development



Council Study

Summary Content of Interim Reports



6th RTWG Meeting
Phnom Penh, Cambodia
17-18 December 2015

www.mrcmekong.org

BioRA Interim Technical Report



1. Specialist Report: 7 disciplines, with 67 indicators
2. Results of preliminary calibration
3. Technical Specifications and User's Guide of BioRA
DRIFT DSS of the LMB

www.mrcmekong.org

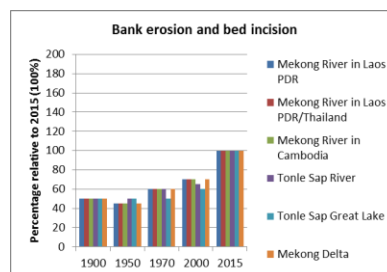
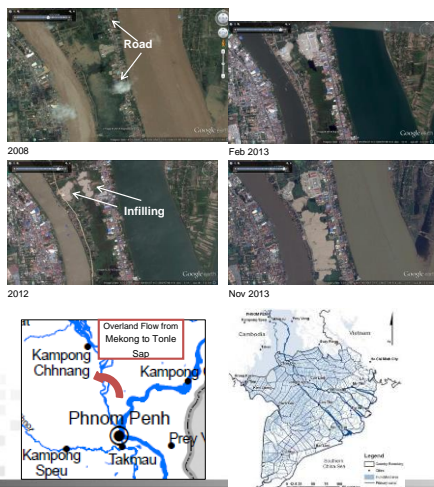
Contents: Specialist Report



- Background information on Council Study and BioRA
- BioRA Zones and Focus Areas
- For geomorphology, vegetation, macroinvertebrates, fish, herpetofauna, birds and mammals:
 - assumption and limitations;
 - literature review;
 - the selection of indicators and linked indicators;
 - the status and trends assessment underlying the assumptions used;
 - response curves and supporting evidence and reasoning for each response curve developed

www.mrcmekong.org

Detailed explanations for status and trends of each indicator

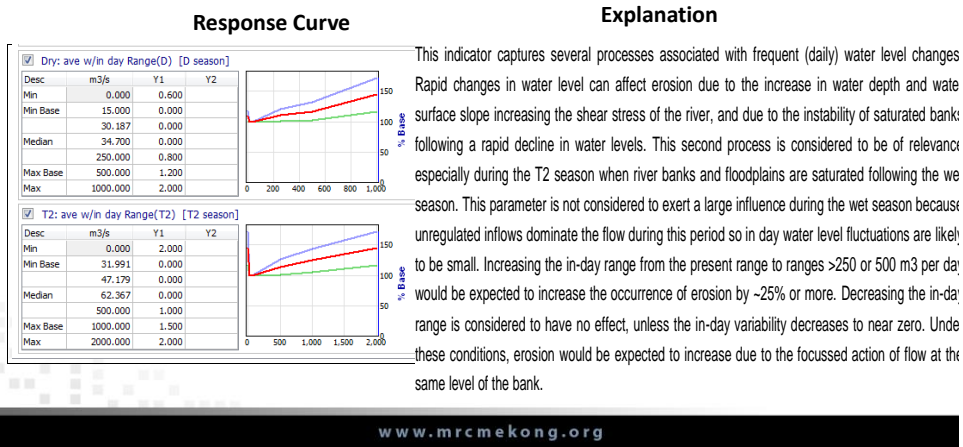


www.mrcmekong.org

Every RC for every linked indicator has an evidence-based explanation



Indicator: Bank erosion and bed incision



Contents: Results of preliminary calibration



- Background information on Council Study and BioRA
- BioRA Zones and Focus Areas
- Preliminary reference time-series used in the DSS
- Results of DSS for 9 hypothetical calibration scenarios for use in testing the DSS

9 Hypothetical calibration scenarios



- CS 1: High dry season flow, low wet season flow
- CS 2: 6 dry years, followed by 6 wet years, etc.
- CS 3: A shortened wet season
- CS 4: Sediment supply at 75% of preliminary reference
- CS 5: Migration blocked between FA1 and FA2 ONLY
- CS 6: n/a
- CS 7: Extreme dry year (1992 – 10%) repeated for whole sequence
- CS 8: Migration blocked between FA4 and 5 ONLY
- CS 9: Migration blocked between FA1 and 2 AND between FA4 and 5
- CS 10: Sediment supply at 25% of preliminary reference

www.mrcmekong.org

Contents: Technical Specifications and User's Guide of BioRA DRIFT DSS in the LMB



- Background information on Council Study and BioRA
- BioRA Zones and Focus Areas
- Layout and organisation of the BioRA DRIFT DSS
- Step-by-step instructions to using the BioRA DRIFT DSS:
 - Viewing
 - Adjusting

www.mrcmekong.org

Detailed guide to every section of the DSS



Item	Reduction (%)
Anadromous @ FA4-Stung Treng	100
Anadromous @ FAS-Kompong Cham	100
Anadromous @ FAS-Kompong Cham	100
Comp: Anadromous @ FA4-Stung Treng	80
Comp: Anadromous @ FAS-Kompong Cham	80
Comp: Catadromous @ FA4-Stung Treng	0
Comp: Catadromous @ FAS-Kompong Cham	0
Main channel resident (long distant white) @ FA3-P	100
Main channel resident (long distant white) @ FA4-S	100
Main channel resident (long distant white) @ FA2-V	100
Comp: Main channel resident @ FA1-Pak Song	80
Main channel resident (long distant white) @ FA4-S	100
Main channel resident (long distant white) @ F: DAM FA4FAS	100
Main channel resident (long distant white) @ FAS-K	100
Comp: Main channel resident @ FA4-Stung Tre DAM FA4FAS	80
Main channel spawner (short distance white) @ FA1-S	100
Main channel spawner (short distance white) @ DAM FA4PA2	100
Main channel spawner (short distance white) @ FA2-S	100
Comp: Main channel spawner @ FA1-Pak Song	80
Main channel spawner (short distance white) @ FA4-S	100
Main channel spawner (short distance white) @ FA4-S	100
Main channel spawner (short distance white) @ FAS-S	80
Comp: Main channel spawner @ FA4-Stung Tre DAM FA4FAS	80

In KNOWLEDGE CAPTURE: Connectivity:

- To view full list of indicators affected by connectivity issues, click on *Water Resource Dev. Effects*. The list can be expanded and contracted using the buttons circled in green in figure to show the water resource developments affecting the change and the percentage change in connectivity as a result of each for one or more scenarios.

www.mrcmekong.org

The RTWG is requested to:



- Take note of the progress knowing that details are in the Technical Reports
- Provide overall feedback and guidance at this time when necessary

www.mrcmekong.org

Cambodia • Lao PDR • Thailand • Viet Nam
For sustainable development



Thank You



www.mrcmekong.org