

National Indicative Plan

Thai National Mekong Committee Secretariat

December 2012

Contents

Executive Summary	1
Glossary	2
1. Introduction	3
1.1 Background	3
1.2 Purpose of National Indicative Plan	5
1.3 Approach and Methodology	6
1.4 Structure of this report	6
2. Interpretation of Basin Development Strategy	7
2.1 General	7
2.2 Opportunities for Thailand	7
2.3 Main Focus Areas in Thailand	9
3 The National Indicative Plan	11
3.1 General	11
3.2 Enabling projects	12
4 Implementation of the National Indicative Plan	12
4.1 General	12
4.2 Implementation arrangements	13
4.3 Workplan and timetable	13
4.4 Funding requirement	13
5 Risks and uncertainties	13
5.1 Political risks	13
5.2 Institutional risks	13
5.3 Technical risks	14
5.4 Financial risks	14
6 Monitoring and evaluation	14
6.1 General	14
6.2 Implementation monitoring	14
6.3 Impact monitoring	15
Appendix A. Consultation records	16
Appendix B. Completed Project Identification Notes (PINs)	21
Appendix C: Logical Framework	30

Executive Summary

The process of preparation National Indicative Plan (NIP) was started in July 2011. Sub-area consultation was conducted 6 times and the issues to develop national projects were confirmed by Sub-area Working Groups (SAWGs) Consultation on NIP Preparation in December 2011. During January – April 2012, Thai National Mekong Committee – Basin Development Plan (TNMC-BDP) had informal consulted with Department of Water Resources (DWR) Regional Offices on linkage among Mekong River Commission (MRC) programmes and implementation of national projects.

There are 3 projects proposed to implement during Basin Development Plan Phase 3 (BDP3) comprise with 1) Capacity building to RBC and network 2) Database management for basin development and 3) Promote river basin organization network and information dissemination. All of these are enabling project that will be directly support to decentralization of the MRC core functions as well as water and related resources projects in Thailand. The 3 projects will motivate planning cycle continue from BDP2. 3 Project Identification Notes (PIN) were prepared following standard format which agreed from regional consultation. Furthermore, the logical framework was developed that can be used for projects monitoring. The framework is presented 6 outcomes and 12 outputs also indicators and sources of data. The estimation budget for projects implementation from May 2012 – April 2015 is 1.08 million USD. For projects implementation arrangement, TNMC-BDP is an executing agency, River Basin Committees (RBCs)/SAWGs act as implementing agency and MRC programmes are technical support agency.

NIP is focused on sub-area activities and linked not only MRC programmes but in line with the 11th National Economic and Social Development Plan (NESDP) that will promote natural resources and environment toward sustainability including strengthen RBCs/SAWGs on basin planning. Transboundary projects will be more initiated in BDP3 cooperate with other programmes and closely working among MRC member countries.

Glossary

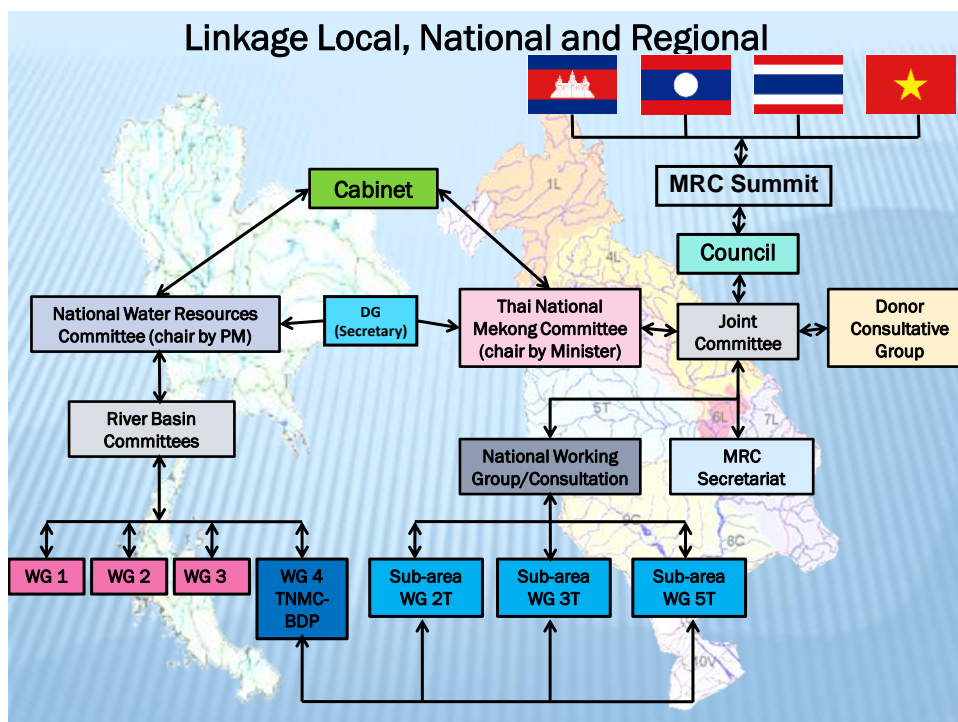
2T	Kok and Northern Kong River Basin
3T	Northeastern Kong River Basin
5T	Chi and Mun River Basin
9T	Tonle Sap River Basin
ASEAN	Association of South East Asian Nations
BDP	Basin Development Plan Programme
CCAI	Climate Change Adaptation Initiative
DWR	Department of Water Resources
EIA	Environmental Impact Assessment
EP	Environmental Programme
FMMP	Flood Management and Mitigation Programme
GMS	Greater Mekong Sub-region
ICBP	Integrated Capacity Building Programme
IKMP	Information and Knowledge Management Programme
IWRM	Integrated Water Resources Management
M-IWRMP	Mekong Integrated Water Resources Management Project
MRC	Mekong River Commission
MRCS	Mekong River Commission Secretariat
NESDP	National Economic and Social Development Plan
NIP	National Indicative Plan
NWRC	National Water Resources Committee
PIP	Programme Implementation Plan
RBC	River Basin Committee
SA	Sub-area
SAWG	Sub-area Working Group
TNMC-BDP	Thai National Mekong Committee – Basin Development Plan Unit
TNMCS	Thai National Mekong Committee Secretariat

1. Introduction

1.1 Background

The Office of Prime Minister's regulations on the National Water Resources Management was firstly established in 1989 and additional amended in 2002. In 2007, it was revised again based on water resources management situation. According to the existing regulations, the National Water Resources Committee (NWRC) is a national level organization which chaired by Prime Minister and consisted of members who are appointed by Prime Minister. The committee comprises one Deputy Prime Minister assigned by the Prime Minister to be the chairperson, ministers, director general from relevant line agencies, representatives from River Basin Committees (RBCs) and experts. The current RBCs were established since 2008 cover 25 river basins in the whole country and will be finished its term in May 2012. At present, Department of Water Resources (DWR) as the NWRC Secretary Office processes consultation in river basin level to identify RBC's candidates. There are 5 river basins located in the Mekong Basin namely Kok and Northern Kong River Basin (2T), Northeastern Kong River Basin (3T), Chi and Mun River Basin (5T) and Tonle Sap River Basin (9T). Department of Water Resources Regional Office acts as RBC Secretary Office.

The RBC has authority to establish Working Group (WG) support to their works in river basin level. Normally, 3 WGs are established under RBC such as Planning WG, Data and Information WG, and Public Participation WG. The Mekong River Basin Development Plan WG (herein after call Sub-area Working Group: SAWG) is additional WG established by the RBC in the Mekong Basin. This WG has play role to implements programmes/activities of MRC which link between national and regional level. In the upper level of SAWG is National Working Group/Consultation comprising of national experts and representatives from sub-area play role on guiding and provide technical support by requested issue. The national working group is not a permanent body but is the mechanism for screening and consider issues before proposes to TNMC meeting. The highest mechanism in nation is TNMC which the DWR Director General is a secretary of the committee and officially the secretary of NWRC as well. See following figure for clarification of linkage organizations.



The National Indicative Plan (NIP) preparation is using SAWG as working arm to provide data/information and consult with stakeholders in sub-area. During BDP bridging phase, sub-area consultations were conducted including national consultation to confirm needs in line with MRC programmes/activities. The consultations are indirectly promoted public participation and supported to national activities.

Integrated Water Resources Management (IWRM) concept was introduced and adopted to implement in Thailand more than 10 years and focused only on water. In term of the Mekong Cooperation, IWRM-based Basin Development Strategy was paved way on cooperation in regional level and guided on regional issues to be implemented during the strategy period. BDP planning cycle is continued and promoted in national and regional level.

In 2012, the 11th National Economic and Social Development Plan (NESDP) is started to implement until the end of 2016 which overlapped with IWRM-based Basin Development Strategy. The 11th NESDP is promoted the country vision of the year 2027 as follows:

“Thai people are proud of having their national identity, in particular hospitality. They also follow the path of Sufficiency Economy with democratic values and good governance. Quality public services and provide throughout the country. Thai people live in a caring and sharing society in a safe and sound environment. Production process is environmentally friendly, and food and energy resources are secure. The economy is based on self-reliance and increasing linkages and competitiveness on the global market. Thailand actively contributes to the regional and world communities with dignity”

The social, economic and environmental are proposed like the vision of MRC. The indicators make tangibility measure to the main targets. Existing base line values were setting up to monitor and evaluate succession of NESDP. It is also presented analysis of global and national significant changes that may either pose threats to or provide opportunities for the country development. That is similar to development trends and plans presented in the IWRM Strategy.

There are 6 main strategies are implemented during 2012 - 2016, comprising as follows:

- 1) Creation of the just society
- 2) Development of the lifelong learning society
- 3) Strengthening of the agricultural sector and security of food and energy
- 4) Restructuring the economy toward quality growth and sustainability
- 5) Create regional connectivity for social and economic stability
- 6) Managing natural resources and environment toward sustainability

IWRM Strategy is directly support the implementation of the 3rd and the 6th Strategy of NESDP. At present day, food and energy are diversified. Food crop cultivated areas are changed to energy crop cultivated areas. Management system for food and energy crop is needed to be set up. Knowledge management in agriculture and food production will be widely disseminated. Furthermore, public participation is required on agricultural development planning while integration among government agencies and local administration will be streamlined.

Strategic priorities for basin development of IWRM Strategy is acquired essential knowledge to address uncertainty and minimize risk of indented development opportunities as well as adapt to climate change. The proposed immediate analysis will be useful for

national and regional level such as sedimentation, capture fisheries reduction, biodiversity change, social, and livelihood impacts in the mainstream corridor. The climate change adaptation strategic priority is supported on forecasting, early warning systems and damage mitigation which part of preparedness for natural disaster response.

The river basin planning process of MRC in Thailand is continued since Basin Development Plan Programme Phase 1 (BDP1) to BDP2 and will go on in the next phase. The planning process has merging with national process which enhance RBC and relevant stakeholders.

In BDP1, SAWGs were established and continued working until present day even during BDP2, RBCs were re-established in 2008 but SAWGs are still functioning as working arms of RBCs for MRC programmes.

In BDP2, programmes/projects of MRC are integrated to implement. TNMCS applied pooling budget concept which presented cost effectively management. After TNMC-BDP met the proposed outputs, the remaining budget could be supported to others programmes/projects i.e. the initiative of M-IWRM transboundary project, training course and study visit under ICBP, the Scenario Assessment which provide common understanding and potential development before the prior consultation of Xayaburi project, the study visit under Thailand – Lao PDR water resources sector cooperation, etc.

Public participation is more widely in sub-area level and river basins network are promoted to cooperate on transboundary issues as substantial output under M-IWRM project. Two transboundary project proposals were developed based on stakeholder requirements such as Tonle Sap – Songkhla Lake Basin (Cambodia – Thailand) and Xe Bang Hiang – Nam Kam (Lao PDR – Thailand). Following these two projects, more potential transboundary project can be developed during BDP3. The projects are presented a good cooperation among member countries including the exchange knowledge and sharing experiences on river basin management by technical support from MRC.

During July – September 2011, sub-area action plan preparation meetings were conducted in 2T, 3T and 5T SA to consult stakeholders on sub-area requirements to be developed as NIP. Based on interpretation information from the meetings, 3 focus areas were proposed and presented in the 1st Regional Meeting on Basin Action Plan Preparation. In December 2011, SAWGs consultation on NIP preparation was conducted to discuss and formulate projects for BDP3 as well as exchange experiences among SAWGs during BDP2. 3 focus areas were confirmed and clear view on BDP3 implementation that the RBC will be an implementing agency with technical support from TNMCS and MRCS.

1.2 Purpose of National Indicative Plan

The NIP is merging with RBC implementation plan, it directly provides data and information for river basin management and working process will strengthen RBC/SAWG members. It also has supplementary to annual budget and gives an opportunity to learn and share experiences with other river basins in national and regional level.

The NIP is a tool to demonstrate decentralization concept of MRC for implementation from national level to sub-area level in parallel with regional level to national level. It will be used to implement projects following new cycle of planning process until 2015. This cycle has more stakeholder participation on project formulation compare to the previous 2 phases. During the implementation of NIP, RBCs and relevant line agencies will be strengthen capacity automatically with learning by doing.

Requirements of sub-area level in Thailand are interpreted to NIP, as the same time the NIP is followed IWRM strategy. Therefore, RBCs/SAWGs who participate in the process will clear view on the linkage among sub-area, national and regional level. Progress of NIP implementation will be reported periodically and completion in each step can be measured. It is also adjustable due to sub-area situation and performance of RBCs will be presented.

The NIP will provide area of transboundary cooperation in the future as the same time it opened for MRC member countries to implement based on country requirement. The development space will be more created not only water resources but other areas of sustainable development under MRC.

1.3 Approach and Methodology

In Thailand, RBC is the first target group to approach. TNMC-BDP had coordinated with DWR Regional Office for NIP formulation since June 2011. The sub-area consultations dates were set up to review previous activities and outputs of BDP1 and BDP2. The draft 11th NESDP was reviewed including group of provincial, provincial plan including related policies before the consultation by TNMC-BDP and SAWG. The consultations were conducted during July – August 2011 (see details in Appendix A). Scattered information and requirements were collected; TNMC-BDP had interpreted to 3 focus areas and developed to NIP. However, during NIP preparation some details were not clarified, TNMC-BDP had discussed with RBC Secretariat to work out in details.

During NIP preparation period, TNMC-BDP has an opportunity to participate in MRC programmes national consultation that activities can be linked and supported to NIP, vice versa focus areas of NIP are supported to MRC programmes and MRC decentralization process. NIP is clarified what's kind of capacity building to be promoted and how to prepare staffs for the future.

The technical support and document preparation for NIP is using internal staffs which saving cost and strengthen staff on the job training. Practically, the national consultant should know background of BDP1 and BDP2 as well as involve in preparation process but due to long time of NIP preparation, it's rarely to find appropriated consultant for this assignment.

Prior consultation with RBCs/SAWGs, TNMC-BDP has clarified on planning process and details in every step that made confident to the participants. The approach was simple way by consultation and open discussion with RBCs/SAWGs. The scope of discussion is in MRC roles and can be linked to IWRM strategy and response to sub-area requirements.

1.4 Structure of this report

This report will be used to guide TNMC-BDP and RBC to implement IWRM Strategy in national and sub-area level. It's reflected needs of sub-area and link to national and regional level. Details of each project are presented tentatively for project implementation during 2012 - 2015. Estimation budget and project outputs/outcomes will be used to prepare Programme Implementation Plan (PIP).

The structure of report is referred to Appendix F of *“Guidelines for Action Planning to implement the IWRM-based Basin Development Strategy”* version September 2011. The outlines are modified suitable to situation and available information. The first chapter is overviewed water resources management structure in Thailand, the regulation on water resources management, a linkage between national and regional level (national water resources management and MRC),

existing national development plan, continuing from BDP1, BDP2 and the next phase, and summarized succession of BDP2.

The second chapter is presented opportunities for Thailand and issues to be developed for project implementation in BDP3 including other interesting areas related to MRC's roles. The third chapter is clarified and provided background and more details of each proposed projects. The next chapter is provided information on implementation structure, proposed workplan based on BDP3 period and summarized budget support to sub-area level, and the outputs of each project are presented as well. The fifth chapter is identified risks that affected to project implementation and how to decline risks. The last chapter is proposed monitoring and evaluation process that finalize implementation loop and results will be used to improve project implementation. This chapter is important for learning process and transparent to follow up in every step of implementation.

Appendix A is given information in details of consultation records as part of NIP formulation. The suggestions and comments are also presented. In addition the records are shown background of each focus areas. Appendix B is provided completed PIN which developed from focus areas. Appendix C is additional is presented in Logical Framework that clarify on project outputs/outcomes, indicators and sources of data for monitoring including workplan and estimated project implementation budget.

2. Interpretation of Basin Development Strategy

2.1 General

BDP Planning Process was introduced to MRC member countries since BDP1. The process was started from national level and collected results to regional level. In the end of BDP1, proposed projects were diversified which difficult to promote in national or regional level. However, it was a learning process for member countries that improved in the next phase.

In BDP2, the planning process was started in regional level firstly. Sub-area study analysis from BDP1, sector reviews and additional related information such as environment and social were provided from member countries before developed regional scenarios. Results of scenarios assessment were consulted with member countries and used to formulate IWRM strategy. Actually, the scenarios of BDP2 were considered only water uses sectors. The next phase of BDP related resources and land use planning will be considered to filling information gap that can be used to improve the strategy. As the same time results of the strategy implementation will be inputs to improve the strategy. This also the learning process and required times among member countries to apply IWRM in appropriated way.

The IWRM strategy comprises basin development and basin management strategy. All projects of BDP3 to be implemented in Thailand is enabling project and part of basin management strategy. Water resources development projects are used national annual budget, the BDP3 is a supplementary budget for RBCs/SAWGs. It will accelerate national planning process, promote basin management network and enhance public participation in Thailand.

2.2 Opportunities for Thailand

According to strategic priorities for basin development and basin management, opportunities for Thailand can be categorized to 2 parts:

1) ***Opportunity for basin management***: Related main strategy of the 11th NESDP is “*Strengthening of the agricultural sector and security of food and energy*” which promote to increase land utilization efficiency, increase agricultural productivity, increase value of

agricultural sector and enhance food and energy security. Agricultural area is one factor of this strategy for sustainable development.

As the time preparation this report, the Feasibility Study and Environmental Impact Assessment (EIA) of IWRM in Northeast Project is being study process. The study is reviewed existing situation of agricultural and irrigated area in northeast Thailand and proposed alternative ways to expand irrigated area based on social, economic and environment consideration. The feasible projects will be detailed design in the next step then construction process. Many official and in-official consultations are conducted during the project implementation.

The IWRM strategy is presented on potential to expand irrigated area in northeast Thailand by diversion from the Mekong. The feasibility and potential expansion irrigated area is being study as mentioned above.

The Mekong River Basin in Thailand (2T, 3T and 5T) covers one third of country. The existing irrigated area is 1.04 million ha¹ compare to agricultural area is 11.72 million ha. The irrigated area is only 10 percent approximately. Potential irrigated area is 4.60 million ha. Therefore, the potential irrigated area can be developed 3.56 million ha.

The project development under this opportunity will be used national budget for construction and implementation.

2) ***Opportunity for basin management:*** All projects to be implemented under BDP3 in Thailand are related to this opportunity.

There is a long history of the Mekong Cooperation more than 50 years. Many water resources development projects were promoted and implemented in Thailand to increase agricultural productivity, expand irrigated area that accelerated economic activities then Thailand become the most rice export country in the world. The consequence of development presented that environmental was deteriorated and social was changed from self sufficient to capital driving society. The first NESDP was established in 1961 used as a blue print of the country in each 5 years. From the 1st – 7th Plan were focused on economic growth only then the following plan were improved related to internal and external situation with more concern on social, environment and public participation accordingly.

The Kingdom of Thailand Institutional B.E. 2540 (1997) and B.E.2550 (2007) presented that the government has duty to provide a plan for managing water resources and other natural resources systematically. The two Institutional are promoted public participation in water and natural resources management. In the period of using the Institutional, RBCs were established in 25 river basins of Thailand.

Based on previous RBC implementation, there are many successful cases and failure cases of management experiences from Thailand that can be shared with MRC member countries. The initiative transboundary cooperation between member countries i.e. Xe Bang Hieng (Lao PDR) – Nam Kam (Thailand) and Tonle Sap (Cambodia) – Songkhla Lake (Thailand) were developed proposal during BDP2. Hence, potential transboundary projects will be more developed in the next phase. This opportunity will bring SAWGs/RBCs working together with technical/financial support from MRC and/or interesting development partners.

The Mekong basin becomes more important because it's the food producing river basin especially the highest rice exports area, the strategic area connect between Pacific and Indian Ocean also the gate to southern China, and potential area for energy development.

¹ National Irrigation Sector Review, Final Report, BDP Unit – TNMC, September 2009

Therefore, the cooperation with other international river basin organizations or regional organizations will expand more not only ASEAN or GMS. The member countries will learn and share experiences of MRC with interested organizations as the same time promote sub-area to regional/international level. The experiences of cooperation will be learnt through RBCs/SAWGs.

The existing NESDP focuses on human resources development is the same as MRC organization goal to bring MRC efficient on transition of core functions and full riparianization of the Secretariat. Therefore, the preparation of human resources capacity is very important. The IWRM training manual will be used and applied suitable course for sub-area. For long term development, the human resources (RBCs, SAWGs) is the most important to be strengthen. The NIP will be provided opportunity to RBCs to implement enabling projects by themselves. The river basin participation will be more widely in sub-basin compare to BDP2. New generation and working groups will be trained and transfer knowledge on river basin management.

2.3 Main Focus Areas in Thailand

Based on previous meetings, 3 main focus areas are proposed as lists follow:

- Capacity building to RBC and network
- Database management for basin development
- Promote river basin organization network and information dissemination

Activities under each focus area are various and reflect national/sub-area requirements. Some activities will be supported by MRC programmes that presented details in Chapter 4. The activities are designed adjustable due to sub-area situation but the main outputs are the same as planning.

2.3.1 Capacity building to RBC and network (PIN T-001)

According to MRC Strategic Plan 2011 – 2015, it aims to consolidate core functions and capacity building for initiation of decentralized function. The decentralized function is River Basin Management Functions comprise 7 functions that will be transferred to member countries.

- (1) Data acquisition, exchange and monitoring
- (2) Analysis, modeling and assessment
- (3) Planning support
- (4) Forecasting, warning and emergency response
- (5) Implement of MRC Procedures
- (6) Promoting dialogue and communication
- (7) Reporting and dissemination

These functions directly assist member countries in sustainable development and management on basin water resources. It is therefore capacity building RBC and network in line with 7 functions need to be done and pave way for MRC riparianization policy implementation. The capacity building of RBC is harmonize with DWR policy to strengthen RBC as well. In Thailand, RBC is the main mechanism to decentralize on water resources management from government side to stakeholder side.

Practically, MRC programmes management in Thailand is integrated already. BDP is an umbrella covers to other programmes that initiate project/activity in preparation phase. For this project, ICBP is the main programme directly response to capacity building then planning and implement activities will be informed to ICBP to updated current situation.

Furthermore each function reflects to related programmes that will play role support to national in project implementation period.

2.3.2 Database management for basin development (PIN T-002)

Previously, BDP1 and BDP2 has provided database for basin planning base on sectors related to water resources development i.e. irrigation, water supply, hydropower, industrial, fisheries, navigation, environment and tourism. Most data and information are presented in term of water resources that not reflected clearly to social and livelihood. In term of IWRM, existing information on land use management is not mentioned and required to improve as present in “Programme Document Basin Development Plan Programme 2011 - 2015”. In sub-area level, data and information is scattered and ungrouped when process on basin planning has consumed a lot of time. However, there is many of data/information for basin management; hence scope of works should be identified. In this connection, database management is based on Procedures for Data and Information Exchange and Sharing (PDIES). 12 major groups/types of data and information are required for implementation of MRC programmes/activities are as follows:

- 1) Water Resources
- 2) Topography
- 3) Natural Resources
- 4) Agriculture
- 5) Navigation and Transportation
- 6) Flood Management and Mitigation
- 7) Infrastructure
- 8) Urbanization/Industrialization
- 9) Environment/Ecology
- 10) Administrative boundaries
- 11) Socio-economy and
- 12) Tourism

Reference is made to above mentioned data/information; it's presented that overlapping with BDP1 and BDP2 data/information. Then the first step for database management is review existing data/information. By this activity it will serve to implementation of MRC Procedures. In Thailand situation, RBCs/SAWGs will be automatically strengthening cause of data/information collection is transferred to their activity.

2.3.3 Promote river basin organization network and information dissemination (PIN T-003)

The Kingdom of Thailand Institutional B.E. 2550 Section 85(4) presented that the government has duty to provide a plan for managing water resources and other natural resources systematically and in a manner generating public interests, provided that the public shall have due participation in the preservation, maintenance and exploitation of natural resources and biological diversity in a balanced fashion. This Section is framed and promoted public participation in water and natural resources management. Refer to above mentioned on the 11th NESDP, the preparation process has participation and public consult in every step.

According to national water resources management in Thailand, there are 25 river basins. In sub-area/river basin level, the RBCs have response to water resources management coordination and regulation of the river basin, as well as the budgetary system for water

resource projects in the basin². The members are selected from group of stakeholders in river basin following the Office of Prime Minister's regulations on the National Water B.E. 2550 (2007).

In BDP1, RBCs were just established and planning process was introduced and implemented by learning and doing. By the end of BDP1, experiences were starting to share among RBCs. Nearly, the end of BDP1; transboundary meetings were conducted such as 2T-1L, 3T-4L and 5T-6L.

In BDP2, RBCs were working closely with TNMCS and started on the Mekong national network. The members of RBCs had often discussed and exchanged experiences on water resources management during national and sub-area meetings/workshops. Since 2009, DWR has established Sub-basin Committees in each River Basin but the establishment is limited due to sub-basin readiness such as understanding, knowledge, RBC Secretariat's manpower, budget etc. However, the establishment process is ongoing and number of sub-basin committee in the Mekong as shown in Consultation Records.

BDP3 is an opportunity to continue and expand planning process to sub-basin level and lead IWRM in practical way. Knowledge and experiences previously in sub-area can be transferred and working in network way to cover all sub-basins of the Mekong in Thailand. In addition, this network is not cover only in national level but potential transboundary will be expanded. Good example ongoing transboundary cooperation is Nam Kam and Xe Bang Hieng, Songkhla Lake and Tonle Sap and also potential between Huay Luang and Nam Ngum. Transboundary network is a progress step that could be promoted in parallel which depend on RBC readiness.

Many documents were prepared during BDP1 and BDP2, only key documents were translated from English to Thai but remaining are not translated to disseminate. During sub-area consultation, SAWG members requested to translate selected documents for their understanding. Furthermore, experiences, success and fail practice are not well documented that require develop to reference and share for river basin management.

3 The National Indicative Plan

3.1 General

Projects under proposed NIP will be implemented mainly in sub-area level and the national consultation is required to exchange and share experiences among sub-areas including summarize in national perspective before report preparation. One project covers 4 sub-areas (5 river basins) which activities details may different but submit the same output.

During BDP1 and BDP2 all activities were implemented in 2T, 3T and 5T sub-area. There is another small sub-area in Thailand, 9T where located in the border between Thailand and Cambodia, it is also an upstream of Tonle Sap in Cambodia. This sub-area in Thailand is called Tonle Sap river basin (9T sub-area). In BDP3, SAWG will be established and made understanding role of MRC. MRC programmes will be introduced and applied BDP planning process. Potential transboundary project between two countries may be developed depend on readiness of the SAWG/RBC. Due to limit of TNMCS staff, the Mekong Basin covers one third of the country and planning process is required to concentrate and follow up in each stage then 9T sub-area is in the next priority. However, the RBC of 9T was established and

² Summary Report, River Basin Organizations Evaluation, Bureau of Promotion and Public Relation, Department of Water Resources, July 2008

has been continued working by national annual budget. When the SAWGs of 2T, 3T and 5T are in place, TNMCS designs to introduce MRC cooperation to 9T sub-area stakeholders. In BDP3 additional projects related to focus areas are proposed.

According to national annual budget preparation, it is consulted with stakeholders in river basin including proposed projects by relevant line agencies then RBC secretariat office proposes requested budget to NWRC (DWR acts as the Secretariat Office). The NWRC consider the whole picture before submit to Bureau of Budget. When the government approves before budget physical year (1 October – 30 September) then each river basin has annual budget to implement projects by related line agencies. In addition, local administrations located in river basin have authorized in their own budget to implement projects in their administrative area. Mainly annual budget arrangement by government and local administrations is hard side – project construction. The NIP will support annual budget especially in soft side and given opportunities to stakeholders in river basin to discuss and find out solution on water and related resources management in the area.

The proposed projects from Thailand to implement in NIP are all enabling projects. The result from previous consultation is indicated that RBCs/SAWGs require strengthening their capacity for sustainable development. They have many channels to bring budget for construction projects but concern on process to consider projects in accordance with their requirement.

3.2 Enabling projects

3 focus areas are used to formulate enabling projects that will be implemented during BDP3 comprising 1) Capacity building to RBC and network 2) Database management for basin development and 3) Promote river basin organization network and information dissemination. All projects are served to strategic priorities of basin management.

4 Implementation of the National Indicative Plan

4.1 General

TNMC-BDP decentralized activities implementation to RBCs since BDP1 for example, local individual consultant had contracted with MRCS to draft sub-area profile report and worked with SAWGs. TNMC-BDP provided technical supported during the report preparation period. Thai version report was submitted to TNMC-BDP for further translation before submitted to MRCS.

In BDP2, SAWGs prepared proposal for sub-area profile report preparation submitted to TNMC-BDP. The proposal was comprised planning activities, milestones and estimated budget. TNMC-BDP had considered the proposal based on PIP activities and transferred budget from imprest account to SAWGs through RBC secretariat office for implementation. Summary of meetings/consultations and clearance budget were submitted to TNMC-BDP after finished each activities. The final output was draft sub-area profile report in Thai and reviewed by TNMC-BDP before translated and submitted to MRCS.

During the time preparing NIP, the imprest account is closed. Any activity of BDP is using advance payment from MRCS. Then in BDP3 the implementation will be adjusted from BDP2 to existing situation. The workplan and time table as proposed in NIP. There are 3 projects with 6 outcomes and 12 outputs that will be implemented during BDP3 under national activity. TNMC-BDP will request budget per activity from MRCS to motivate project activities and monitor workplan quarterly.

4.2 Implementation arrangements

Implementation arrangements are set up in national level and link to regional level as follows:

TNMC-BDP is an executing agency will play role to provide guidance to RBCs/SAWGs on projects implementation, coordinate and cooperate with MRCS on technical support including budget arrangement support to sub-areas activities, follow up and monitoring projects implementation, and prepare progress report submit to MRCS.

RBCs, SAWGs are implementing agencies will implement projects as proposed in workplan, coordinate and cooperate with stakeholders, prepare summary meetings/consultations in Thai submit to TNMC-BDP.

MRCS is a technical support agency will provide regional data and information, transfer knowledge of water resources management from regional to national and sub-area level, strengthen SAWGs/RBCs on management tools.

4.3 Workplan and timetable

Proposed workplan and timetable are covered BDP3 from May 2012 – April 2015. The NIP is designed only outcomes and outputs, details of workplan presented activities will be prepared later in each sub-area after discussion. Based on previous implementation during BDP1 and BDP2, activities in each sub-area may different and adjustable to current situation.

4.4 Funding requirement

The estimation budget of projects implementation is about 1,080,000 USD cover the whole period of BDP3. The budget per project are 1) Capacity building to RBC and network – 475,000 USD 2) Database management for basin development – 245,000 USD and 3) Promote river basin organization network and information dissemination – 360,000 USD. Details per each output are presented in Appendix C. This budget is additional to river basin annual budget that will accelerate the planning process and expand more public participation activities.

5 Risks and uncertainties

This chapter is overviewed risks and uncertainties in the whole programme, details on risks and mitigation are presented project by project in appendix B.

5.1 Political risks

The 11th NESDP is provided strategic direction of country until 2016, any water resources development project as well as related resources planning will use the plan as bible for projects development. Previously implement of BDP1 and BDP2, the activities were postponed in election time because political activities were arranged during that time. Some members of RBCs/SAWGs were busy. When the election time was passed then BDP activities were accelerated following proposed plan. The political affected to project implementation of MRC in low level even unstable political situation in the past 3 years. TNMC-BDP mitigates political risks by frequency contact to key members of RBCs/SAWGs and flexible to adjust the proposed plan until they have available times.

5.2 Institutional risks

New RBCs will be established in May 2012 then TNMC-BDP and DWR Regional Office (RBC Secretariat Office) will work together to introduce new RBC members on MRC

cooperation. Actually, SAWGs working continuously that can bring previous experiences to the new RBCs.

According to working process TNMC-BDP closely coordinate with RBC Secretariat Office to follow up working progress. The officers who work at RBC Secretariat Office are government officer, the reshuffle is normal practice and new comer takes response to RBC Secretariat Office. TNMC-BDP role is to introduce the new officers on MRC cooperation and take time to make understanding. To accelerate readiness for working TNMC-BDP invites the new comers to participate in activities if they are available. The RBC Secretariat Office is very important in river basin planning process because it is the focal point of sub-area level network. The institutional risks level is medium for project implementation.

5.3 Technical risks

Technical support for project implementation will be leaded by MRCS. TNMC-BDP will summarize selected documents and translate to Thai for RBCs/SAWGs reference. Technical transfer is challenging to TNMC-BDP. In the past, some government officers and SAWG members were trained on many MRC tools but they had responsible to day to day works in the first priority. Therefore on the job is not continuously when the important case is required on technical, they can't response immediately. However, technical risks level is low because TNMC-BDP can seek from related line agencies and discuss case by case with MRC programmes. TNMC-BDP gives priority on concept idea and logical of work more than technical. The technical can be requested from line agencies and network but if the concept is not correct the following activities are hard to implement and meet objectives.

5.4 Financial risks

During BDP1, imprest account was introduced to TNMCS and the process is going very well in BDP2. In the past 2 years, the internal process of TNMCS was complicated which take times and resources. The process was requested many documents translation and increased day to day workload. Therefore, the advance payment from MRCS is applied to solve financial liquidity of TNMC-BDP. Also, the pooling budget of MRC programmes at TNMCS is implemented effectively then the financial risks are mitigated to low level. In addition, line agencies have budget to implement routine works related to MRC river basin management core functions which can support working process.

6 Monitoring and evaluation

6.1 General

The project implementation plan will be prepared later following project outcomes/outputs after consult with RBCs/SAWGs. It is a part of Programme Implementation Plan (PIP) that will be updated annually related to current situation.

6.2 Implementation monitoring

Logical framework is developed and presented in Appendix C. The indicators in each level of the framework are proposed and use for monitoring. Practically, progress report is prepared and submitted to MRCS in quarterly period that can be linked to regional level. The outputs from sub-area level will be summarized and presented in national implementation progress.

Previously, in BDP2 the imprest account was active. SAWGs/RBCs proposed workplan and budget for the assignments (Sub-area profile report) submitted to TNMC-BDP.

TNMC-BDP advanced budget for implementation based on proposed output in each step. Therefore the implementation in sub-area could be monitored. In BDP3, during the imprest account is not used, the previous practice could not apply. TNMC-BDP will request budget to implement project from MRCS based on proposed activities from SAWGs/RBCs. When the imprest account can be used again the previous practice will be applied.

6.3 Impact monitoring

Outcomes from projects implementation are identified in Appendix C. Impact will be monitored from this proposed. Practically, some activities are continued from BDP2, therefore, part of outcome will be presented early. For example transboundary projects between Tonle Sap – Songkhla Lake and Xe Bang Hieng – Nam Kam implementation are approved budget by the World Bank since April 2012. BDP2 has been involved and seeding fund for projects initiative. Another momentum from study visit between Thailand and Viet Nam supporting budget by BDP2 will be continued transboundary project in BDP3.

In the whole picture, outcome of proposed 3 projects is directly served to decentralization of river basin management core function to member countries. It is challenging to regional level transfer to national level as well as national to sub-area level.

Appendix A. Consultation records

TNMCS started consultation with stakeholders on the National Indicative Plan preparation in July 2011. The target groups were RBCs and SAWGs in the Mekong Basin of north and northeastern region of Thailand. Number of consultations in each sub-area depended on sub-area requirements with supporting budget from TNMC-BDP PIP bridging phase.

The consultation objectives were to inform SAWG/RBC on progress of BDP since phase 1 to phase 2, and to discuss on interesting issues in the next phase. During these consultations, the participants were informed strategic priority of IWRM-based Basin Development Strategy and remaining activities during bridging phase. Outputs of BDP1 and BDP2 were also presented to participants to each consultation for reminding basin planning process. Summarized of discussion issues from consultations are shown as follows.

A.1 The Consultation on 3T Action Plan Preparation: the consultation was conducted on 13 July 2011 in Udon Thani Province. Key points are noted as follows:

1) The participants discussed on relation between Regional Action Plan (RAP) and National Indicative Plan (NIP). In some cases NIP will not cover only one country if member countries agree to develop transboundary project together. At present, 3T RBC has joint project with Lao PDR such as Nam Kam and Xe Bang Hieng under transboundary component of Mekong – IWRM Project.

2) Not only IWRM Strategy will be considered to formulate NIP but related plan and strategy as well i.e. NESDP, Group of provinces strategy, province strategy and river basin strategy. The 11th NESDP will be implemented in 2012 until 2016. TNMCS had summarized important strategies of NESDP for discussion with the participants in the meeting during 6-7 August 2011. 3T SAWG had provided information and summarized provincial strategy and group of provinces strategy.

3) The Sub-area Profile Report was presented interesting issues of 3T each province. It should be updated and interpreted as input for NIP formulation.

4) The participants proposed draft tentative NIP formulation working plan to be finalized before the end of BDP2 Bridging Phase.

A.2 The Consultation on 5T (Chi) Action Plan Preparation: 5T sub-area comprises 2 river basin, Chi and Mun. In each river basin has its RBC to manage water resources in the basin. On 1 August 2011, the consultation was conducted in Khon Kaen which information has been shared:

1) Chi River Basin comprises 20 sub-basins. At present, DWR Regional Office 4 acts as a Chi RBC Secretariat Office cooperates with organization network in the Basin. 19 sub-basin committees were established already and the remaining is on process. During the establishment process, DWR Regional Office 4 has coordinated with representatives of stakeholders in sub-basin to provide information of planning process, experiences from established sub-basins and general information of sub-basins.

In the past 2 years, the establishment of sub-basin committees has more progress. DWR Regional Office 4 integrated annual budget and supporting budget from MRC and World Bank. They also cooperated with local institutes to support on personnel resource and technical such as Khon Kaen University, Rajabhat Chaiyaphum University, Rajabhat Mahasarakham University and Rajamangala University of Technology Isan, Khon Kaen Campus.

2) 5T SAWG selected 2 sub-basins i.e. Young sub-basin and Huay Saibat sub-basin as pilot areas for knowledge integration between regional and local level. Technical persons will work with local people on flood warning system and climate analysis.

Young sub-basin is a pilot area under Climate Change Adaptation Initiative (CCAI). It is being implemented by 5T SAWG.

3) The participants requested on knowledge and information dissemination in Thai. Plenty of information and knowledge were outputs from MRC programmes, but it's difficult to access by RBC and civil society because mostly were presented in English. They also requested implantation indicators and implementation of Chi – River Basin Action Plan.

4) 5T SAWG discussed on activities regarding to MRC-BDP budget until April 2012 such as:

- river basin management experiences exchange between sub-basin and transboundary basin
- the formulation on vision, strategy and sub-basins development policy
- review and follow up planning process in sub-basin level
- sub-area scenario formulation

DWR Regional Office 4 will prepare implementation plan and budget during BDP2 bridging phase and submit to TNMCS

5) The participants proposed 3 focus areas to be developed in BDP3 comprising:

- Capacity building to RBC and network
- Database management for basin development
- Promote river basin organization network and information dissemination

A.3 The Consultation on 5T (Mun) Action Plan Preparation: the consultation with Mun SAWG was conducted on 3 August 2011 in Ubon Ratchathani Province.

1) Mun River Basin consists of 31 sub-basins, DWR Regional Office 5 acts as Mun RBC Secretariat Office. The sub-basin committees were established 12 sub-basins. Therefore 19 sub-basins not yet process and are proposed to establish in the next 2 years. According to sub-basin committee establishment, dialogues, meetings, forum and informal discussion are required to find out potential members of the committee. The Mun RBC Secretariat Office will prepare work plan for remaining sub-basin committees and discuss in details with SAWG. The SAWG will use their network to identify potential persons and provide information of planning process. The main budget is from annual budget with additional budget from MRC programmes. The integration of budget is presented and effectively used base on stakeholder requirements.

2) The 12 established sub-basins will be processed following BDP planning cycle for data collection and analysis. The SAWG will work closely with many groups of stakeholder by using BDP sub-area profile guideline. The outputs will be accepted by stakeholder cause of public participation in the process.

3) Mun River Basin has much local knowledge on natural resources management but none of official collection, the participants proposed to collect, prepare database and adapt to use in local level with appropriated way.

At present, Mun River Basin network has supporting budget from many organizations to conduct local dialogue and promote community learning. The activities have strengthened working persons in sub-area. It also solve environmental problem in local level. The network has promoted culture as common issue for working together between communities in Thailand and Cambodia. Therefore civil society network has a potential to implement pilot area of transboundary water management with good cooperation and support by MRC.

4) The participants suggested setting up clear outputs and outcomes of food security that mentioned in IWRM based Basin Development Strategy.

5) Mun RBC Secretariat Office will prepare implementation plan of BDP2 bridging phase and submit to TNMCS to integrate with other sub-areas.

A.4 The Consultation on 2T Action Plan Preparation: the consultation with 2T SAWG was conducted on 18 August 2011 in Chiang Rai Province.

1) 2T sub-area located in northern region of Thailand covering 3 provinces namely Chiang Mai, Chiang Rai and Phayao. It consists of 12 sub-basins, 6 sub-basins were established sub-basin committees already. The others are on establishment process to cooperate and coordinate with river basin networks, civil society, local administration and related line agencies in the area.

2) 2T sub-area has a strength point on local irrigation system management; this knowledge is more than 700 years but nowadays new generation is not interesting in this knowledge. The participants suggested on the job training and summarize best practice shared with other areas.

3) A good cooperation and coordination among related agencies, local administration, water use groups and civil society will decrease workloads of agencies and fit to stakeholder requirements.

According to previous experiences of water resources management in Ing sub-basin is not success cause of lack of cooperation along the river. The participants suggested using RBC channel for discussion and solving problem.

4) During September 2011 – April 2012, following activities were proposed:

- 6 sub-basin committees establishment
- Exchange water resources management experiences among sub-areas in Thailand
- Sub-basin committee strengthening
- 2T sub-area scenario formulation

A.5 3T Sub-area Working Group Meeting for Action Plan Preparation on 6 – 7 August 2011. The meeting was conducted following the Consultation on 3T Action Plan Preparation. The objective is to analyzed relevant strategies relate to basin development planning of 3T. In the end of the meeting, SAWG proposed to arrange 3T Sub-area Forum in September 2011. Summary of meeting are as follows:

1) TNMCS presented key points of draft 11th NESDP, Ministry of Natural Resources and Environment's strategy including DWR's strategy. SAWG presented group of provinces strategy and provinces in 3T strategy. Participants discussed on the relation among strategies and looked for main strategy to be applied to 3T sub-area. Finally, SAWG agreed on parts of DWR strategy that cover their interesting issues such as:

- Develop IWRM mechanism by focusing on RBC and Sub-basin Committee capacity building. Activities under this strategy cover training, study visit, on the job training etc. It needs management tools such as river basin management database covering natural resources, economic, social and environment. The government agencies will support on database and information of river basin organization. Public participation is also promoted in every steps of development.

- Develop cooperation on international water resources management. 3T is the Mekong riparian sub-area which has a good logistic connection in the region. When ASEAN community is effective in 2015 the sub-area will more affect on the transboundary development.

2) 3T sub-area comprises 29 sub-basins, at present 14 sub-basin committees are established. Remaining 15 sub-basin committees are under establishment process. Natural resources and sector in the sub-basins influence to appropriate sub-basin members.

3) Two projects under MRC are ongoing in 3T sub-areas i.e.

- Wetland Climate Change Adaptation Initiative Project selected pilot project at Bueng Kong Long, Bueng Kan Province.

- Thansboundary Project under Mekong-IWRM is selected Nam Kam sub-basin in Thailand and Xe Bang Hieng in Lao PDR.
- The SAWG interested in Nam Hueng sub-basin which locates along the border between Thailand and Lao PDR to be developed as transboundary project.

3.5.4 According to MRC programmes implementation, 3T sub-area has more activities compare to the others, it also integrate annual budget and supporting budget together serve for sub-area requirements.

A.6 3T Sub-area Forum on 13 – 14 September 2011: More than 150 participants were participated in the forum. The objective of the forum is to revise Northeastern Khong River Basin Strategy and update basin development plan with stakeholder participation. The facilitators of the forum comprise group of instructor from Udon Thani Rajabhat University, DWR and DWR Regional Office 3 officer. TNMCS and MRCS were invited as observers in the forum. Key information is summarized as shown:

1) The facilitator presented existing Geographical Information System (GIS) support to river basin planning such as hydro-meteorology stations, basin boundary, administrative boundary, river basin network, forest and national park boundary, land use, topographic information etc. At present, Department of Water Resources (DWR) prepared digital map support to River Basin Committees of 25 River Basins. Example of using information for flood management was presented. The participants were reminded the application of tools and information for basin planning.

2) The information from sub-area profile study was extracted and presented to participants. DWR Regional Office 3 officer presented role of the Secretary Office of Northeastern River Basin Committee (3T RBC).

3) The situation of regional cooperation in the Mekong Region and linkage with other regional cooperation was overviewed to participants. At national level, Draft 11th National Economic and Social Development Plan (NESDP) was summarized. Main strategies from NESDP were presented and explained as important background including group of provinces strategy in 3T sub-area. Existing 3T sub-area strategy was also summarized and explained.

4) The facilitators applied SWOT (Strengths, Weaknesses, Opportunities and Threats) Analysis as a tool to analyze 3T sub-area situation. 4 groups of participants were separated to consider and discuss on each parameter. Many issues were proposed under parameter and priority ranking by group discussion. The group representative presented results of group discussion to the meeting.

According to SWOT analysis, 4 groups of strategic direction were proposed such as offensive strategy, responsive strategy, development strategy and solve problem strategy.

5) Draft vision of 3T sub-area from each group was proposed base on keywords from the discussion. They will be integrated together and finalize to 3T sub-area vision.

6) Due to limit of time, the facilitators will analyze results of group discussion and proposed draft 3T sub-area strategy. However, some issues were not clarified and needed to be discussed later with 3T sub-area working group. DWR Regional office 3 will arrange the meeting to finalize 3T sub-area strategy then distribute to participants for review again. The report in Thai will be prepared and submitted TNMCS by one month.

7) The participants used an opportunity during the Forum to discuss other interesting issues such as transboundary tributary project of 3T and Lao PDR. Proposed project to TNMCS such as Nam Kam sub-basin in Sakon – Nakhon and Nakhon Phanom province, Nam Hueng sub-basin in Loei province.

8) Base on raw data of the forum, some can be extracted and developed for 3T sub-area action plan. It is a part of National Indicative Plan.

A.7 SAWGs Consultation on National Indicative Plan Preparation

On 22 – 23 December 2011, SAWGs Consultation on National Indicative Plan Preparation was arranged at Chiang Rai to formulate projects for BDP3 and exchange experiences among SAWGs during BDP2. In BDP2, SAWGs had motivated the second round of planning process. They prepared sub-area profile report in 2009. The budget from BDP was used to promote public participation on basin management. At the same time, DWR regional offices had established sub-basin committees under RBC. The SAWGs also participated in lower Mekong scenarios formulation and results interpretation in terms of hydrology, economy, environment and society. However, formal scenario formulation in sub-area is not yet formulated. According to BDP bridging phase, they proposed to formulate scenario in sub-area and extend participation in sub-basin level for sub-basin committee establishment.

During the consultation, other focus areas were presented by SAWGs for project formulation:

2T SAWG proposed 2 focus areas such as

- The study on climate change adaptation which supports by the strategy on basin development “climate change adaptation strategy”. It’s directly link to CCAI. 2T SAWG intended to implement pilot project with public participation. Existing information from BDP, EP and relevant programmes will be considered. Indicators will be developed to measure progress and succession

- Promote alternative energy: According to economic growth in 2T sub-area, demand of electricity is increasing significantly. Therefore oil and gas are high consumption and produce carbon dioxide. 2T SAWG concerned on sustainable development by using green energy. Alternative energy with environmental friendly is proposed for potential study.

3T SAWG: Programmes/activities of MRC have been implemented in 3T sub-area more than other sub-areas. 3T SAWG has integrated some activities together to save budget and use for other required activities. Actually, SAWG members are not permanent staff and they prefer to work together for their area. Effective time and budget management are needed and they proposed for planning integration and budget management together. This activity may develop as a part of capacity building on project and financial management.

5T SAWG proposed to prepare lesson learnt from BDP2. The meeting agreed on this idea and requested TNMCS to collect information from each sub-area and prepare lesson learnt report.

The bridging phase will be finished in the end of April 2012 then TNMCS suggested SAWGs to prioritize their activities base on remaining time and available budget. They agreed on project preparation is the first priority in this period.

Appendix B. Completed Project Identification Notes (PINs)

Outline of PIN T-001

Project Title	Capacity Building to RBC and Network	BDP ref	PIN T-001
Responsible (lead) entity	TNMCS	Start date:	June 2012
Other entities involved	2T, 3T, 5T RBC	End date:	April 2015
Principal beneficiaries	RBCs, SAWGs		

Objectives and key performance indicators

Goal	Strengthen national level water and related resources management processes, strengthen basin management processes and implement a targeted capacity building programme
Immediate objective(s)	Effective implementation in the basic processes of river basin manage and maintaining a computerized water information system, project cycle monitoring to support basin planning and enhanced stakeholder participation
Indicators of success Outcomes	Each sub-area has progress on decentralisation. At least 3 core functions can be implemented by RBC.
Key deliverables	<p>Summary of workshops/consultations, training programmes, BDP progress report</p> <p>Summary of workshops/consultations will be drafted in Thai and submitted to TNMC-BDP for collect and overview the whole basin. Training programmes designed by BDP or related programmes will be integrated together to enhance RBCs and network. Any progress on core function transfer process will be informed TNMC-BDP as well as related activities support by MRC programmes in national level, these are inputs for the progress report preparation. The progress report is a part of routine work of TNMC-BDP to prepare and submit to MRCS. Additional chapter on core functions transferred is in the report.</p>
Milestone dates	<p>The project milestones are presented tentatively because the fixing dates should be consulted with RBCs/SAWGs</p> <p>Summary of workshops/consultations – after the workshops/consultations in 2 weeks</p> <p>Training programmes – Annual planning in cooperate with other programmes</p> <p>BDP progress report – every 3 months</p>
Linkages to other Projects	<p>Planning process is continued from BDP2 and promoting dialogue and communication to stakeholders in sub-area. BDP is in cooperating with ICBP on IWRM training.</p> <p>ICBP support on roadmap of MRC human resources planning</p> <p>IKMP supports on analysis, modelling and assessment.</p> <p>FMMP supports on forecasting, warning and emergency response.</p> <p>M-IWRMP regional component</p> <p>Linkage with routine work of DWR on flood and drought forecasting.</p>

Project Title	Capacity Building to RBC and Network	BDP ref	PIN T-001
----------------------	---	----------------	------------------

Description of the project

Outline description	The project is part of preparation for decentralisation of river basin management core functions. The process will be done step by step based on existing capacity of RBC and requirements.
Tasks and outputs	<p>(1) Data acquisition, exchange and monitoring – Updated sub-areas profile report (PIN T-002)</p> <p>(2) Analysis, modelling and assessment – Sub-area scenarios analysis Draft scenario formulation report (Thai version) – February 2014 2T, 3T, and 5T scenario formulation report – December 2014</p> <p>(3) Planning support – BDP progress report, workshops, meetings</p> <p>(4) Forecasting, warning and emergency response – National flood forecasting project, warning system in the Mekong</p> <p>(5) Implement of MRC procedures – MRC procedures are promoted and applied in sub-area level</p> <p>(6) Promoting dialogue and communication – Workshop/consultation reports (PIN T-003)</p> <p>(7) Reporting and dissemination – Reports translation, publication (PIN T-003)</p>
Location	2T, 3T and 5T sub-area
Implementation arrangements	<p>TNMC – Executing agency</p> <p>RBC - Implementing agency</p> <p>MRC programmes – Technical support agency</p>

Risks, mitigation and coordination

Principal risks and means of mitigating risks	<p>New RBCs will be established in May 2012 and may be late for official establishment due to process. However existing SAWGs working continuously from BDP2 will mitigate risk of project implementation. RBC is the main risk but as the same time is an opportunity for TNMCS to extend more networks with new members and continue working with previous members.</p> <p>Capacity building is an unfinished work, new generation will replace existing RBCs/SAWGs require times to transfer and share experiences. On the job training is the way TNMCS adopted since BDP1. Outputs from each step will prove the succession and use experiences to improve better works.</p>
External coordination requirements	The project is closely link to ICBP work plan especially road map for regional and national staff in the future (What kind of staff is required in next 5 years or 10 years? What type of specialist to be trained? How to train?)
Internal coordination requirements	Keep moving close coordination with RBC secretariat offices and concerned networks. Continue working with other programmes, keep updated information and exchange working experiences with other programmes in TNMC. Also pooling budget that will save times and human resources.

Project Title	Capacity Building to RBC and Network	BDP ref	PIN T-001
----------------------	---	----------------	------------------

Project funding

Existing funding	The project will accelerate working process in national level. Each year national budget is already contributed to every river basin in Thailand.
Additional funding required	-

Work plan

Work plan	<i>See Table C1</i>
Cost estimate of additional funding requirements	The pooling budget of MRC programmes is in place. TNMCS can split or move budget in appropriated but remain proposed outputs and cost saving. <i>See Table C2</i>

Supporting documentation

Document title and electronic file reference	Date	Author	Status Draft/Approved	Summary contents
IWRM in the Mekong Basin Training Manual	December 2009	MRC	Final Report	Starting a Training Programme, Introduction to IWRM, The Enabling Environment, Institution Role, Management Tools, Basin Training Skill and Knowledge
Briefing Note for Heads of Line Agencies Decentralization of the MRC's Core Function	31 October 2011	MRC	Draft	Explanation of core functions, decentralised process, institutional arrangements, timeline and key milestones

Outline of PIN T-002

Project Title	Database management for basin development	BDP ref	PIN T-002
Responsible (lead) entity	TNMCS	Start date:	June 2012
Other entities involved	2T, 3T, 5T, 9T RBC	End date:	April 2015
Principal beneficiaries	RBCs, SAWGs		

Objectives and key performance indicators

Goal	Strengthen basin management processes, Develop environmental and social objectives and “baseline indicators”
Immediate objective(s)	Harmonized methods and tools, State of Basin monitoring and reporting, facilitated development of agreed basin-wide objectives or “baseline indicators”
Indicators of success Outcomes	Updated data and information are used for sub-area scenarios formulation, Database is used for river basin planning
Key deliverables	<p>9T Sub-area profile report</p> <p>2T, 3T and 5T scenarios formulation report</p> <p>Key deliverables from BDP1 and BDP2 are sub-area profile reports from 3 sub-areas i.e. 2T, 3T and 5T. In fact, during BDP1 and BDP2 in sub-area level planning process just moved to stage 1 sub-area study and analysis. There is more progress in BDP2, in regional level can move to stage 3 river basin strategy development. As the same time of BDP1 and BDP2 implementation, MRCS had developed tools for river basin planning and applied to sub-area level for many pilot projects under IKMP, FMMP, and EP. In BDP3, data and information of 2T, 3T and 5T will be updated and used for sub-area scenario formulation. Practically, there are many ways of scenario formulation and the hydrological modelling couldn't cover all of social or environmental terms. The scenarios can be made from overview related studies, national and regional plan. Moreover, 9T sub-area profile report is not yet prepared and if start planning process will be promoted on stage 1 firstly.</p>
Milestone dates	<p>Draft 9T sub-area profile report (Thai version) – June 2014</p> <p>9T sub-area profile report – December 2014</p> <p>Draft scenario formulation report (Thai version) – February 2014 (PIN T-001)</p> <p>2T, 3T, and 5T scenario formulation report – December 2014 (PIN T-001)</p>
Linkages to other Projects	<p>BDP Basin-wide socio-economic database</p> <p>IKMP supports on analysis, modelling and assessment.</p> <p>EP supports on environmental information</p> <p>12 major groups/types of data and information based on PDIES from related line agencies</p>

Project Title	Database management for basin development	BDP ref	PIN T-002
----------------------	--	----------------	------------------

Description of the project

Outline description	Data and information collection and analysis is the first stage of planning process. Previously BDP processed sub-area study and analysis for using in regional scenario formulation and assessment. Even PDIES is the first approved procedures since 2001 but IKMP focus only water resources information and not integrate with BDP. The systematic and based line information for river planning is required and can be used in regional and sub-area level. This project is a part of decentralisation and encourages RBC using data and information for planning.
Tasks and outputs	9T sub-area profile preparation – 9T sub-area profile report Updated data and information 2T, 3T and 5T – Summary of updated sub-area profile report Sub-area Scenarios formulation – Sub-area scenario formulation reports
Location	2T, 3T, 5T and 9T sub-area
Implementation arrangements	TNMC – Executing agency RBC - Implementing agency MRC programmes – Technical support agency

Risks, mitigation and coordination

Principal risks and means of mitigating risks	In BDP1 and BDP2, SAWG is the working arms for RBC on MRC cooperation. It serves not only BDP but also other programmes of MRC. Actually SAWG members have their own permanent work but volunteer for river basin assignment. That why in BDP1 and BDP2 the submission of sub-area profile reports were late than planning schedule. To mitigate postponed working process additional supporting from local institute will more involve in BDP3. Background of RBCs/SAWGs are different that required times to make understanding in technical term. TNMC-BDP will work closely with MRC-BDP to digest information before consult with RBCs/SAWGs.
External coordination requirements	Base line information of PDIES is needed to be set up from IKMP for MRC standard and it can be applied to other MRC programmes. During base line information is not set up, TNMC-BDP will use guideline of sub-area profile and additional information is depended on sub-area requirement.
Internal coordination requirements	DWR has prepared GIS and data for water resources development in river basin boundary. It was distributed to RBC secretariat office. TNMC-BDP will coordinate with RBC secretariat office to update and merge information for basin planning.

Project funding

Existing funding	Related line agencies have their budget for data collection support to routine work. For river planning level TNMC-BDP or RBC secretariat office will use secondary data from related line agencies.
Additional funding required	-

Project Title	Database management for basin development	BDP ref	PIN T-002
----------------------	--	----------------	------------------

Work plan

Work plan	<i>See Table C1</i>
Cost estimate of additional funding requirements	<i>See Table C2</i>

Supporting documentation

Document title and electronic file reference	Date	Author	Status Draft/Approved	Summary contents
Guideline for Development of Sub-area Profiles	March 2009	MRC	Draft Final	Preparation of Resource Inventories, Description of Projects, Opportunities and Challenges, Assessment of Development Potential, Identification of Critical Main Secondary Basins, Stakeholder Participation
Procedures for Data and Information Exchange and Sharing (PDIES)	November 2001	MRC	Approved	Definitions of key terms, Objectives, Principles, Data and Information Exchange and Sharing, Implementation Arrangements, Entry into Force

Outline of PIN T-003

Project Title	Promote river basin organization network and information dissemination	BDP ref	PIN T-003
Responsible (lead) entity	TNMCS	Start date:	June 2012
Other entities involved	2T, 3T, 5T, 9T RBC	End date:	April 2015
Principal beneficiaries	RBCs, SAWGs, MRC member sub-areas, potential sub-area in national and regional level		

Objectives and key performance indicators

Goal	Establish basin objectives and management strategies for water-related sectors. Strengthen basin management processes
Immediate objective(s)	Integrating management strategies for fisheries, navigation, flood and drought risk management, ecosystem, wetland and watershed management. RBCs interact regularly through a network, facilitated by NMCs, with the aims of strengthening their planning process, coordination and monitoring role and developing basin wide synergies.
Indicators of success Outcomes	Transboundary projects between sub-areas/sub-basins Transboundary project term is not only sub-areas/sub-basins share boundary for project development but also sub-areas/sub-basins have same interesting issues to be developed joint project and share experiences.
Key deliverables	Concept note Transboundary project proposal Translated MRCS reports BDP2 is success to initiate transboundary projects with M-IWRMP. These projects (Songkhla Lake – Tonle Sap and Nam Kam – Xe Bang Hiang) are implemented in 2012. There are many potential sub-areas cooperation between member countries to share experiences on interesting issues. In addition study visit outputs from BDP2 will also use for input to prepare project proposal. There are plenty of reports prepared by MRCS which needed to translate and disseminate to stakeholders in sub-area level. For the thick report that difficult to read by non-technical persons, summary report is needed to be translated. Then knowledge and information can be transferred from regional to national and sub-area level.
Milestone dates	Draft transboundary project proposal – December 2013 Transboundary project proposal – March 2014 Project Implementation Plan – September 2014
Linkages to other Projects	During BDP2, TNMC-BDP provided seeding budget and co-funding for study visit, transboundary project preparation with M-IWRMP. In 2012, M-IWRMP is agreed for funding by development partners. This module can be expanded in BDP3 for potential sub-areas/sub-basins.

Project Title	Promote river basin organization network and information dissemination	BDP ref	PIN T-003
----------------------	---	----------------	------------------

Description of the project

Outline description	<p>The project will provide opportunity to RBCs/SAWGs to exchange knowledge and experiences. As the same time MRCS will play their role on technical supporting and NMCs will close coordination and cooperation. The readiness RBCs are the first target group to promote this project. Details and working process are linked to transboundary component of M-IWRMP, the other MRC programmes will support in technical. Requirement of regional/national consultant to prepare project proposal will be proposed by NMCs.</p> <p>MRC documents will be selected for translation per request from country. RBCs can propose interesting MRC publication to translate from English to Thai.</p>
Tasks and outputs	<p>RBCs consultation to selected potential sub-areas/sub-basins – Summary report</p> <p>Study visit to find out agreed issued to be developed project proposal – Concept note, summary report</p> <p>Transboundary meeting – Summary report</p> <p>Transboundary proposal preparation – Project proposal</p>
Location	2T, 3T, 5T and 9T sub-area
Implementation arrangements	<p>TNMC – Executing agency</p> <p>RBC - Implementing agency</p> <p>MRC programmes – Technical support agency</p>

Risks, mitigation and coordination

Principal risks and means of mitigating risks	<p>Readiness of sub-areas to formulate transboundary project is the key risk. TNMC-BDP should consult with RBC and stakeholder to find out potential sub-areas/sub-basins. The other risk is transboundary sub-area/sub-basin to develop project together. TNMC-BDP will coordinate with other NMC-BDP for discussion and consultation before propose to MRCS request for technical and budget support.</p>
External coordination requirements	<p>Closely coordinate and cooperate between NMCs is the key success to move forward on project proposal preparation continuously to project implementation. The process is support sustainable development and cooperation among MRC member countries.</p>
Internal coordination requirements	<p>TNMC-BDP will consult with RBCs, follow up and provide technical support to selected sub-area/sub-basin. Project management function is needed to introduce as well as project protocol.</p>

Project funding

Existing funding	BDP3 and M-IWRMP
Additional funding required	-

Project Title	Promote river basin organization network and information dissemination	BDP ref	PIN T-003
----------------------	---	----------------	------------------

Work plan

Work plan	<i>See Table C1</i>
Cost estimate of additional funding requirements	<i>See Table C2</i>

Supporting documentation

Document title and electronic file reference	Date	Author	Status Draft/Approved	Summary contents
Mekong Integrated Water Resources Management, Project Document	11 November 2009	MRCS	Approved	Background, Context and Rationale, Objectives and Project Design, Implementation and Management

Appendix C: Logical Framework

PIN T-001 Capacity Building to RBC and Network

<i>Objectives, outcomes, outputs</i>	<i>Indicators</i>	<i>Sources of data</i>
<i>Immediate objectives</i>		
Effective implementation in the basic processes of river basin manage and maintaining a computerized water information system	RBC adopt planning process to river basin	RBC minutes of meeting, DWR reports
Project cycle monitoring to support basin planning and enhanced stakeholder participation	RBC has monitor project cycle implemented in river basin	RBC minutes of meeting, DWR reports
<i>Outcomes</i>		
Outcome 1 RBC has progress on decentralization	OI 1 Supporting from line agencies and local administrations	Decentralization Report, River Basin budget plan, local administration plan
Outcome 2 3 core functions can be implemented by RBC	OI 2 3 core functions are in place in the sub-area	Decentralization Report, Progress report
<i>Outputs</i>		
<i>Outputs leading to Outcome 1</i>		
Output 1.1 RBC/SAWG adopt river basin management function to day to day works	I 1.1.1 Sub-area reports, annual work plan	Progress report
Output 1.2 Training courses in associate with related programmes	I 1.1.2 Agreed on training course	Progress report, programme documents
<i>Outputs leading to Outcome 2</i>		
Output 2.1 Sub-area scenario formulation	I 2.1.1 MRC tools applied to sub-area	Sub-area scenario formulation report
Output 2.2 MRC procedures are applied in sub-area	I 2.2.1 Sub-area annual plan	Progress report
Output 2.3 Workshops, consultations, forums on river basin planning	I 2.3.1 Suggestions and recommendations	Minutes of meeting, summary report

Note: The project is not presented related outputs from PIN T-002 and PIN T-003

PIN T-002 Database management for basin development

<i>Objectives, outcomes, outputs</i>	<i>Indicators</i>	<i>Sources of data</i>
<i>Immediate objectives</i>		
Harmonized methods and tools, State of Basin monitoring and reporting, facilitated development of agreed basin-wide objectives or “baseline indicators”	RBC/SAWG can manage data and information for river basin planning	Sub-area report, RBC minutes of meeting
<i>Outcomes</i>		
Outcome 1 Updated data and information are used for sub-area scenarios formulation	OI 1 Scenarios formulation is agreed	Sub-area scenario formulation report
Outcome 2 Database is used for river basin planning	OI 2 Sub-area annual plan	Progress report
<i>Outputs</i>		
<i>Outputs leading to Outcome 1</i>		
Output 1.1 Screened data and information related to PDIES	I 1.1.1 Database of sub-area	Sub-area profile report
Output 1.2 Workshops and consultations	I 1.1.2 Recommendations and suggestions	Minutes of meeting
<i>Outputs leading to Outcome 2</i>		
Output 2.1 Updated sub-area profile and prepared sub-area profile report	I 2.1.1 Database of sub-area	Sub-area profile report, progress report

PIN T-003 Promote river basin organization network and information dissemination

<i>Objectives, outcomes, outputs</i>	<i>Indicators</i>	<i>Sources of data</i>
<i>Immediate objectives</i>		
Integrating management strategies for fisheries, navigation, flood and drought risk management, ecosystem, wetland and watershed management.	Transboundary projects are formulated	Transboundary project proposal, progress report
RBCs interact regularly through a network, facilitated by NMCs, with the aims of strengthening their planning process, coordination and monitoring role and developing basin wide synergies.	RBC network in national and regional are increased	Progress report, RBC report
<i>Outcomes</i>		
Outcome 1 Transboundary projects between sub-areas/sub-basins	OI 1 Study visit, exchange visit	Concept note, summary report
Outcome 2 Established sub-basin working group with transfer knowledge of basin planning	OI 2 Number of sub-basin working group establishment	RBC work plan, RBC report, progress report
<i>Outputs</i>		
<i>Outputs leading to Outcome 1</i>		
Output 1.1 Study visit, exchange visit	I 1.1.1 Agreed on interesting issues	Concept note
Output 1.2 Transboundary project proposal, project implementation plan	I 1.1.2 Developed transboundary projects between MRC countries	Consultation reports
<i>Outputs leading to Outcome 2</i>		
Output 2.1 Planning process is introduced and applied	I 2.1.1 Workshops, consultations, meetings	Minutes of meetings
Output 2.2 Translated selected documents	I 2.2.1 Number of translated documents	Progress report

Table C1 Project Workplan

No.	Outcomes/Outputs	Year													
		2012			2013				2014				2015		
		May	Q3	Q4	Q1	Q2	Q3	Q4	Q1	Q2	Q3	Q4	Q1	Apr	
PIN T-001 Capacity Building to RBC and Network															
Outcome 1	RBC has progress on decentralization														
O 1.1	RBCs/SAWGs adopt river basin management function to day to day works														
O 1.2	Training courses in associate with related programmes														
Outcome 2	3 core functions can be implemented by RBCs														
O 2.1	Sub-area scenario analysis														
O 2.2	MRC procedures are applied in sub-area														
O 2.3	Workshops, consultations, forums on river basin planning														
PIN T-002 Database Management fot Basin Development															
Outcome 1	Updated data and information are used for sub-area scenarios formulation														
O 1.1	Screened data and information related to PDIES														
O 1.2	Workshops and consultations														
Outcome 2	Database is used for river basin planning														
O 2.1	Updated sub-area profile and prepared sub-area profile report														
PIN T-003 Promote River Basin Organization Network and Information Dissemination															
Outcome 1	Transboundary projects between sub-areas/sub-basins														
O 1.1	Study visit, exchange visit														
O 1.2	Transboundary project proposal, project implementation plan														
Outcome 2	Established sub-basin working group with transfer knowledge of basin planning														
O 2.1	Planning process is introduced and applied														
O 2.2	Translated selected documents														

Table C2 Budget estimation per outcomes/outputs

No.	Outcomes/Outputs	Budget (USD)
PIN T-001 Capacity Building to RBC and Network		
Outcome 1	RBC has progress on decentralization	110,000
O 1.1	RBCs/SAWGs adopt river basin management function to day to day works	20,000
O 1.2	Training courses in associate with related programmes	90,000
Outcome 2	3 core functions can be implemented by RBCs	365,000
O 2.1	Sub-area scenario analysis	140,000
O 2.2	MRC procedures are applied in sub-area	90,000
O 2.3	Workshops, consultations, forums on river basin planning	135,000
PIN T-002 Database Management for Basin Development		
Outcome 1	Updated data and information are used for sub-area scenarios formulation	155,000
O 1.1	Screened data and information related to PDIES	60,000
O 1.2	Workshops and consultations	95,000
Outcome 2	Database is used for river basin planning	90,000
O 2.1	Updated sub-area profile and prepared sub-area profile report	90,000
PIN T-003 Promote River Basin Organization Network and Information Dissemination		
Outcome 1	Transboundary projects between sub-areas/sub-basins	200,000
O 1.1	Study visit, exchange visit	120,000
O 1.2	Transboundary project proposal, project implementation plan	80,000
Outcome 2	Established sub-basin working group with transfer knowledge of basin planning	160,000
O 2.1	Planning process is introduced and applied	100,000
O 2.2	Translated selected documents	60,000
Total		1,080,000