



Mekong River Commission

**Mekong Integrated Water Resources Management Project**

**(M-IWRMP)**

Project Document

**Transboundary Cooperation for River Basin Management  
between Lao PDR and Thailand**

**in**

**Xe Bang Hieng Basin-Lao PDR and Nam Kam Basin-Thailand**

**Final**

**MRC Secretariat at Vientiane, Lao PDR**

15 November 2013

## Table of Contents

Abbreviations and Acronyms .....	4
1. Introduction .....	5
1.1 Overview.....	5
1.2 Scope.....	5
1.3 Rationale .....	6
1.4 Proposal preparation .....	8
2. Background .....	10
2.1 River Basin Committees (RBCs).....	10
2.1.1 Lao PDR.....	10
2.1.2 Thailand.....	11
2.2 Project areas.....	13
2.2.1 Xe Bang Hieng Basin-Lao PDR .....	16
2.2.2 Nam Kam Basin-Thailand.....	17
3. Programme design.....	18
3.1 Goal and objective .....	18
3.2 Outcomes, outputs and activities .....	18
3.3 Approach.....	24
4. Monitoring and Evaluation .....	26
5. Reporting.....	26
6. Gender Mainstreaming.....	27
7. Project implementation arrangements.....	27
7.1 National project coordination .....	30
7.2 The role of the M-IWRMP/MRCS .....	31
7.3 Transboundary Coordination .....	31
7.4 Workplan and milestones .....	33
8. Budget .....	36
9. Financial arrangements: .....	37
10. References .....	38

## Annexes

Annex 1) Design and Monitoring Framework .....	<b>Error! Bookmark not defined.</b>	39
Annex 2) List of participants in formulating the project document	<b>Error! Bookmark not defined.</b>	46
Annex 3) Final Joint Single Project Implementation Planning	<b>Error! Bookmark not defined.</b>	48
Annex 4) Detailed Activities / Milestones / Tasks & Budget planning for first year (2014, Thailand)	<b>Error! Bookmark not defined.</b>	58
Annex 5) Detailed Activities / Milestones / Tasks & Budget planning for first year (2014, Lao PDR)	<b>Error! Bookmark not defined.</b>	82

## Tables

Table 1 Key events in the preparation of the project proposal .....	8
Table 2 Key milestones.....	33
Table 3 Indicative long-term workplan.....	35
Table 4 Budget estimates for Outcomes and Outputs.....	36

## Figures

Figure 1 Project Result Chain .....	20
Figure 2 Overall Approach .....	25
Figure 3: Development and approval process.....	28
Figure 4 Institutional arrangements .....	32

## Maps

Map 1 Mekong Basin.....	6
Map 2 River basin boundaries and topography .....	14
Map 3 Land cover .....	14
Map 4 Population 2007-2008.....	15
Map 5 Wetlands .....	15
Map 6 Max Flood Inundation (Year 2000).....	16

## **Abbreviations and Acronyms**

AusAID	: Australian Agency for International Cooperation
AIP	: Agriculture and Irrigation Programme (of the MRC)
BDP	: Basin Development Plan Programme (of the MRC)
DWR	: Department of Water Resources
EP	: Environment Programme (of the MRC)
ICBP	: Integrated Capacity Building Programme (of the MRC)
IKMP	: Information and Knowledge Management Programme (of the MRC)
IWRM	: Integrated Water Resources Management
LMB	: Lower Mekong Basin
LNMC	: Lao National Mekong Committee
M-IWRMP	: Mekong Integrated Water Resources Management Project (of the MRC)
MRC	: Mekong River Commission
MRCS	: Mekong River Commission Secretariat
NWRC	: National Water Resources Committee (of Thailand)
PDIES	: Procedures for Data and Information Exchange and Sharing
PWUM	: Procedures for Water Use Monitoring
PMFM	: Procedures for Maintenance of Flow on the Mainstream
RBP	: River Basin Platform
RBC	: River Basin Committee
TNMC	: Thai National Mekong Committee
TCG	: Transboundary Coordination committee
WB	: World Bank
WUP	: Water Utilization Programme (of the MRC)
WREA	: Water Resources and Environment Administration (of Lao PDR)

## **1. Introduction**

### **Overview**

The Mekong River commission (MRC) implemented their Water Utilization Programme (WUP) from 2000-2008. This programme developed basin models, procedures and technical guidelines to implement the 1995 Mekong Agreement. The WUP was considered successful but incomplete, as highlighted in its Evaluation and the Mid-term Review of the MRC Strategic Plan 2006-2010. To ensure follow-up and sustainability - especially regarding the implementation of the Procedures and finalization of the technical guidelines - the Mekong IWRM Project (M-IWRMP) was formulated and has been under implementation since 2010 with support from the Australian Agency for International Development (AusAID) and the World Bank (WB).

The M-IWRMP aims to institutionalise IWRM approaches and principles in the region via the MRC framework and its Member Countries. The Project addresses IWRM challenges in the Lower Mekong Basin (LMB) through a three tier approach, combining interlinked regional, national and transboundary initiatives. The regional component sits at the apex, and provides the overall framework of principles, procedures and guidelines for IWRM. The transboundary component is framed and linked to both the regional and national M-IWRMP components (MRC M-IWRMP, 2009). The transboundary component foresees the implementation of several bilateral projects that practically enable applied IWRM implementation between the countries in order to contribute to future regional collaboration. In general, the Project components complement each other by improving the functioning of the institutional framework, in building knowledge and improving decision making processes for the sustainable development of water and related resources. The transboundary projects require the participation of two or three riparian countries, which may formulate from a transboundary issue or a need of cooperation.

Transboundary project proposals consequently form part of the implementation of the M-IWRMP under the transboundary component (Outcome 2); and aim to enable the joint planning, management and implementation of trans-boundary projects through specific initiatives between riparian countries. The transboundary project proposal were submitted to the M-IWRMP 5<sup>th</sup> Project Steering Committee (PSC) and approved.

### **Scope**

The overall aim of the project is to strengthen the transboundary dialog between Lao PDR and Thailand. Dialog already exist to some degree, and the project will build on those experiences and mechanisms. The project will focus on establishing and capacitating river basin organisations in the use of the IWRM tools available from MRC, in data sharing and use of MRC Procedures. Initial issues for transboundary corporations have been identified as Wetland Management, Flood Management and Sustainable Irrigation Development.

The implementation and coordination mechanisms for the project are part of the dialogue between the countries, and will be developed during the life of the project. The final arrangements for dialogue will be part of the future dialogue processes. The project can be

seen as a pilot project for strengthening the dialogue between two countries on IWRM issues, and should be the basis for future dialogue on other IWRM issues.

**Rationale**

The Mekong River flows for almost 4,800 km from its source in Tibet through China, Myanmar, Lao PDR, Thailand, Cambodia and Viet Nam via a Delta into the East Sea, draining a basin area of 795,000 km<sup>2</sup> (Fig 1.1). The Mekong River and its tributaries form a dynamic hydro-ecological system supporting unique biodiversity and providing food security for more than sixty million people in the region. The system is undoubtedly one of the world’s most diverse river ecosystems (MRC 2010).



Map 1 Mekong Basin

In 1995, four countries in the Lower Mekong Basin including Lao PDR, Thailand, Cambodia and Viet Nam had signed Agreement for the Cooperation for the Sustainable Development of the Mekong River Basin. This agreement established the Mekong River Commission (MRC), which would serve to coordinate the development of the basin’s resources, in a sustainable manner and ensuring the reasonable and equitable utilisation of water between the LMB countries.

To achieve this goal the Commission needs to apply the IWRM principles at regional, transboundary, national sub-basin and project levels as well as strong cooperation among the

four countries of the LMB and other two countries in the Upper Mekong Basin (China and Myanmar).

Transboundary cooperation and projects in the M-IWRMP framework are designed to link the regional and national levels; showing how the principles of the Mekong Agreement can be applied at sub-basin levels – in recognition of the Dublin Principles<sup>1</sup>. In general, the transboundary projects will be identified from transboundary issues and/or conflicts; i.e. transboundary fisheries management on the Sekong River (transboundary tributary river) between Cambodia and Lao PDR and transboundary flood management in Mekong Delta between Cambodia and Viet Nam, and aim to achieve joint management plans to address the issue.

However, there are few transboundary tributaries between Lao PDR and Thailand as the Mekong River forms the border between the two countries. There are nevertheless significant opportunities for these two countries to cooperate around shared experiences in establishing local water management institutions, planning and managing sub-basins using IWRM principles. Moreover, the two countries can share common interests and problems in sub-basins, which not directly transboundary in nature. *The transboundary project aim Lao PDR and Thailand will gain more experiences of water and related resources management and application of IWRM through cooperation and coordination to support sustainable basin development which make a significant contribution to the socio-economic development of both countries and overall benefit to healthy of the Mekong River and its tributaries.*

The River Basin Committees (RBCs) and working groups are designed as a main mechanism for project implementation at national level. The RBCs are presently the main body for river basin planning and management of both countries. The RBC comprises a wide stakeholder base from government and non-government sectors related to water and related resources management in the basin. The mandates of the RBCs of both countries are similar. The common roles of the RBCs are formulating basin strategies and plans on water resources management, establishing working groups to implement assigned tasks and provide guidance regarding to beneficial and equitable development and management incorporating IWRM principles (details roles and responsibilities of the RBC of both countries are described in Chapter 2). Another important role of the RBCs is coordination between people, relevant agencies, other basin committees and other countries to support implement water resources management plans and activities. This role is essential to support establishing transboundary coordination and management mechanism between Lao PDR and Thailand. This body will enable the sharing of the knowledge and experiences, management and technical oversight and ensures project implement effectively. Thailand has more than 20 years experience in formulating and regulating of the RBCs. Presently, there are 25 RBCs established for the main basins in Thailand while Lao PDR just start formulating and implementing the RBCs in last few years for Nam Ngum and Nam Theun-Kading basins. *The experiences and lesson learned from formulating and implementing of the RBCs show that strengthening of the RBCs is a key factor on effectiveness of water and related resources management. Capacity building to strengthen the RBCs and working groups through sharing experiences, joint*

---

<sup>1</sup> Dublin Principle 2: Water development and management should be based on a participatory approach, involving users, planners and policy-makers at all levels.

*learning and building knowledge-base between Lao PDR and Thailand is therefore the first priority.*

The MRCS particularly M-IWRMP will provide facilitating and technical support (knowledge and tools) to the RBCs and working groups and transboundary dialogues when both countries needed. This transboundary project provides additional opportunities to demonstrate and learn how the Procedures and technical guidelines of the 1995 Mekong Agreement in the Mekong Basin applicable at a regional level, can be applied at the national and sub-basin levels to support maintaining the Mekong mainstream and sustainable development in the basin. This project proposal therefore provides a valuable addition to the overall package of transboundary projects being managed through the M-IWRMP. *Cooperation for river basin management between Lao PDR and Thailand will therefore aim at three main issues; firstly strengthening the RBCs and working groups for basin planning and management, secondly building knowledge-based by sharing information and experiences, and thirdly to demonstrate how the Procedures of the 1995 Mekong Agreement applicable at a regional level can be applied and supported by local actions through transboundary cooperation and coordination between Lao PDR and Thailand.*

Xe Bang Hieng basin of Lao PDR and Nam Kam basin of Thailand are selected as pilot basins to implement this transboundary project. Both basins located near each other and have similar livelihood, water resources issues (wetland and flood management and irrigation development) and IWRM challenges. They make contributions to the flow and quality in the mainstream Mekong River (details information of the pilot basins are described in Chapter 2). The Xe Bang Hieng basin still has abundance of forestry and natural resources and low development of water and related resources. Most people in the basin are poor and high dependent on natural resources. They still use cultural base to manage and maintain their natural resources. Conversely, the Nam Kam basin has high water resources development level particularly in agriculture sector. Most natural resources are consuming therefore people in the basin have experiences both positive and negative impacts from the development. Currently, both basins do not have the RBCs and working groups to manage water and related resources and coordinate with different stakeholders in the basin. *This makes them ideal for the exchange of knowledge on establishing local water management institutions, sharing experiences on water resource management, learning implementation of the IWRM and the Procedures of the 1995 Mekong Agreement and applying lessons to sustain their river basin development and management as well as the Mekong River. The healthy sign of flows (quantity and quality) at the outlets and pro-poor development of both basins in the future are key indicators to measure achievement of implementation of this transboundary project.*

## **Proposal preparation**

The proposal has gone through a broad participatory process from its conceptualisation, to formulation and preparation. This process help to collect, consolidate, and balance the interests, concerns and needs of the key stakeholders in the selected river basins and subsequent commitments to the Project implementation. Table 1.1 summarises key events in the proposal preparation. The list of participants who involved in formulating the project document is presented in **Annex 2**.

Table 1 Key events in the preparation of the project proposal

Date	Event	Key discussion points and decision made
------	-------	---



29 Jul 2011	1 <sup>st</sup> transboundary meeting, Pattaya, Thailand	<ul style="list-style-type: none"> <li>• Overall concept and process to prepare transboundary project proposal</li> <li>• Initial concern issues between Lao PDR and Thailand including wetland, flood and RBC</li> <li>• Project areas are Xe Bang Hieng-Lao PDR and Nam Kam-Thailand</li> </ul>
19 Sep 2011	1 <sup>st</sup> Thai National consultation, Sakon Nakorn, Thailand	<ul style="list-style-type: none"> <li>• Concept note on Lao PDR-Thailand Transboundary River Basin Management</li> <li>• Key issues and concerns in the Nam Kam basin focus on wetland, flood, irrigation and RBC</li> <li>• Agreed on the overall concept and need to discuss in further details</li> </ul>
14 Oct 2011	1 <sup>st</sup> Lao National consultation, Savannakhet, Lao PDR	<ul style="list-style-type: none"> <li>• Concept note on Lao PDR-Thailand Transboundary River Basin Management</li> <li>• Key issues and concerns in the Xe Bang Hieng basin focus on wetland, flood, irrigation and RBC</li> <li>• Agreed on the overall concept and require more data collection</li> </ul>
9 Nov 2011	2 <sup>nd</sup> Thai National consultation, Sakon Nakorn, Thailand	<ul style="list-style-type: none"> <li>• 1<sup>st</sup> draft project proposal focus on goal, objective, outcomes, outputs and activities</li> <li>• First priority is strengthening RBCs and working groups</li> <li>• How to strength RBCs and working groups and indicators</li> </ul>
21 Nov 2011	2 <sup>nd</sup> Lao National consultation, Savannakhet, Lao PDR	<ul style="list-style-type: none"> <li>• 1<sup>st</sup> draft project proposal focus on goal, objective, outcomes, outputs and activities</li> <li>• Agreed in overall but require long-term implementation and more budget</li> </ul>
13-14 Dec 2011	1 <sup>st</sup> transboundary visit at Xe Bang Hieng Basin, Lao PDR	<ul style="list-style-type: none"> <li>• Initial understand the basin and livelihood of the Xe Bang Hieng Basin</li> <li>• Initial exchange knowledge</li> </ul>
16 Dec 2011	2 <sup>nd</sup> transboundary meeting, Vientiane, Lao PDR	<ul style="list-style-type: none"> <li>• Draft final proposal</li> <li>• Areas of improvement</li> </ul>
27 Dec 2011	3 <sup>rd</sup> transboundary meeting, Nakhon Phanom, Thailand	<ul style="list-style-type: none"> <li>• Finalize the proposal</li> <li>• Next steps for preparation of project implementation</li> </ul>
28-29 Dec 2011	2 <sup>nd</sup> transboundary visit at Nam Kam Basin, Thailand	<ul style="list-style-type: none"> <li>• Initial understand the basin and livelihood of the Nam Kam Basin</li> <li>• Initial exchange knowledge</li> </ul>
11-12 July 2013	Vientiane, Lao PDR.	<ul style="list-style-type: none"> <li>• Joint Transboundary Workshop, Lao PDR and Thailand to understand the respective PIP and consolidated to finalize the Joint Single Transboundary PIP.</li> </ul>
22 Oct 2013	Joint Transboundary Meeting in Vientiane, Lao PDR,	<ul style="list-style-type: none"> <li>• 1. Defined Joint Single Milestones for the Xe Bang Hieng / Nam Kam Tb project, 2- Agreed the schedule for meeting with International Transboundary Consultant to finalize this Transboundary Project Document.</li> </ul>
11-12 Nov 2013	Joint Transboundary Working Group meeting in Sakon Nakhon, Thailand	<ul style="list-style-type: none"> <li>• Finalized Joint Single Transboundary PIP, including Activities, Milestones;</li> <li>• Developed detailed task and budget plan for the first year (2014);</li> <li>• Finalized the Xe Bang Hieng-Nam Kam Transboundary Project Document.</li> </ul>
06 Dec. 2013	Launching transboundary workshop in Sovanakhet, Lao PDR.	<ul style="list-style-type: none"> <li>• Finalized Term of Reference's articles;</li> <li>• Initial Term of Reference;</li> <li>• Clarified several relevant important activities for the Project Implementation;</li> </ul>

## 2. Background

### River Basin Committees (RBCs)

The RBCs are now the main body for river basin planning and management in Lao PDR and Thailand. They both serve as interlink between the people, the government agencies and other non government organizations. The RBCs will represent a wide stakeholder base, incorporate the principles of IWRM, provide recommendations and a spatial basis for inter-sectoral integration of water resources planning and management, and cooperate with other RBCs nationally and internationally. This existing body will be a key mechanism for regional and transboundary cooperation and collaboration. The mandate and roles of the RBCs of Lao PDR and Thailand are described in details below.

#### 2.1.1 Lao PDR

In June 2010, the Prime Minister signed a Decree for “Establishment of River Basin Committees in Lao PDR”. Based on this Decree, the Nam Ngum and Nam Theun-Kading RBCs are established for river basin management as pilot basins in Lao PDR.

#### *Formulation of the RBC*

The River Basin Committee consists of government and individual representatives and other related sectors, who are nominated by the Prime Minister of Lao PDR based on the proposal from; the Minister of the Prime Minister’s Office, the Head of the Water Resources and Environment Administration (WREA), chairperson of Lao National Mekong Committee (LNMC) by Prime Minister as assigned to Vice-Prime Minister who provide guidance on environmental and water resources nominator. The RBC has five year chairperson rotating-system, with the first chairperson being from the Province based on the agreement of provincial representatives in the river basin.

#### *Role of the RBC*

The River Basin Committee (RBC) is a non-permanent organization. It has a mandate to act as a water resources executive in river basin under the direction of the LNMC for management, development, conservation, rehabilitation and utilization of water resources (which will be called “water resources management”) in river basin area.

#### *Authority and duties of the RBC*

- 1) Determine strategies, action plans and project on water resources management within the river basin to propose to the responsible government officials for further approval; Provide guidance on effective implementation;
- 2) Consider and approve proposal for submission to the leadership’s approval on water allocation plan, flood and drought prevention plan, water quality management plan, restoration plan on physical, biological and environmental aspects of water resources in the river, pond, groundwater and other sources in the concerned river basin according the proposal of the river basin committee secretariat;

- 3) Receive all related sector's opinions on water resources management and development on river basin to be the basis of proposing appropriate resolution; review disputes on water resources management and utilization based on set resolution, following procedures and proposing to the appropriate government official for approval; propose rewards for those who have outstanding performance in water resource protection and management; or carry out discipline in case of the violation /breach of any rule;
- 4) Review and approve the draft program and river basin development project to be proposed to the appropriate government officials for consideration and adaptation and provide guidance for the effective implementation;
- 5) Provide consultation and comments to the appropriate government officials on water resources management issues arising from development projects which raise serious impacts within river basin to be proposed to the responsible officials for approval;
- 6) Approve and implement action plans and annual budget plans of RBC and prepare summary reports;
- 7) Coordinate and cooperate with the representatives of other countries and international organizations for further support on water resources activities; participate in negotiation and sign contracts, sub-contracts and memorandum of understanding about water resource activities in river basin; take actions within and outside country based on the approval of the responsible government official;
- 8) Organize the regular twice a year meeting and call for the extra-ordinary meeting , the chairperson and vice chairperson have the authority to call the technical staff from related sectors to participate in the regular and the extra-ordinary meetings if necessary;
- 9) Invite representatives of water related sectors, localities, specialists and advisors, representatives of line agencies to attend in the RBC meeting if necessary;
- 10) Form *ad-hoc* working groups including representatives from sectors and localities concerned in order to study specific issues;
- 11) Propose on the improvement of the organizational structure and the assisting apparatus of RBC if necessary;
- 12) Provide guidance in the management and use of fund for the management and development of the river basin;
- 13) Perform other duties as assigned by the responsible government official.

River Basin Platform is used as a part of the process of establishing RBC in Lao. The RBP is a more informal stakeholder group, that when it is formalise becomes the RBC.

### **2.1.2 Thailand**

The current water resources management in Thailand has not yet been enforced by any concrete law or regulation, therefore, the government has declared the issuance of the National Water Resources Regulation firstly in 1989 and additional amended in 2002. The Regulations were again revised in 2007 to be the Office of Prime Minister Regulations on Water Resources Management. Based on this revised Regulations, a National Water Resources Committee (NWRC) and River Basin Committees must be established with the

Department of Water Resources (DWR) works as the Secretariat to and also handle the Office of General Administration for both organizational bodies (DWR Thailand, 2009).

#### *Formulation of the NWRC*

The NWRC is a national level organization. The committee is chaired by the Prime Minister and consists of members who are appointed by the Prime Minister. The committee comprises one Deputy Prime Minister to be the chairman, ministers, permanent secretaries, directors-general, heads of state enterprises, representatives of water user's organizations of all sectors, technical experts, qualified persons, representatives of non-government organizations, etc. The Director-General of the DWR is a member of the committee and serves as its secretary.

#### *Authority and duties of the NWRC (summary)*

- 1) To submit to the Cabinet for approval the objectives and policy on ensuring the availability of large-, medium-, and small-scale water resources to meet demands of people;
- 2) To set guidelines and directives for government agencies, state enterprises and various organizations regarding formulation of plans or projects for water resources development or construction as well as coordination;
- 3) To scrutinize and approve plans and to direct, control, supervise, and oversee implementation of plans and report its implementation in term of water quality and quality;
- 4) To consider and solve any urgent problem or impediments;
- 5) To prioritize water allocation and regulate the use of water from various sources to meet the requirements for consumption, hydropower generation, industry, agriculture, and others; and also to report the Cabinet; and
- 6) To propose to the Cabinet any introduction or revision of rules, regulations or laws relating to construction or development, control, prevention, and conservation of water resources and water quality.

#### *Formulation of the RBC*

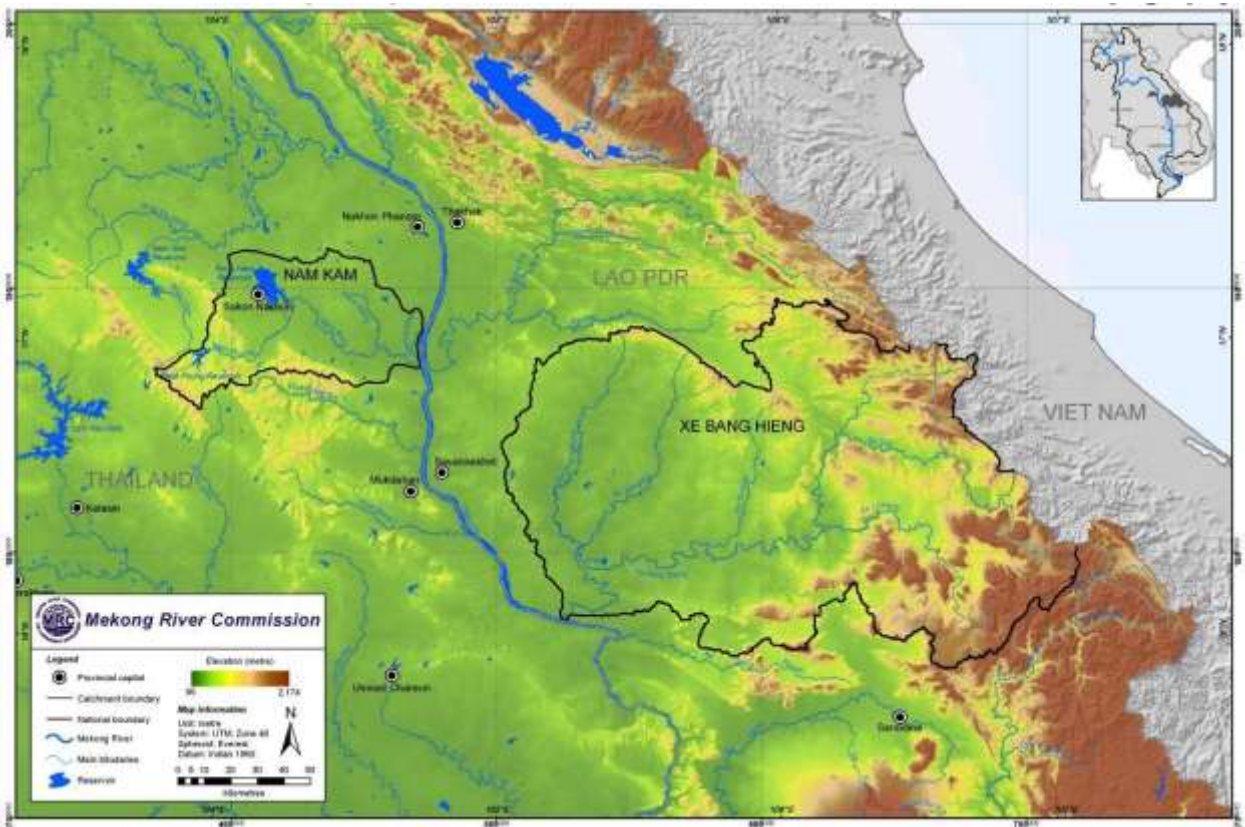
The RBC comprises members selected from government officials, state enterprise representatives, representatives of local organizations and water users, stakeholders work or live in the concern basins and qualified persons who have knowledge and experience relating to water resources management. The appropriate number and proportion of membership depends on the local situation of each river basin. Chairman and secretary of the RBC are to be appointed from the RBC, and assistant secretaries may be included as necessary. Presently, there are 25 RBCs established for the main basins in Thailand. The Nam Kam basin is a sub-basin of one of these 25, namely Mekong basin.

#### *Authority and duties of the RBC*

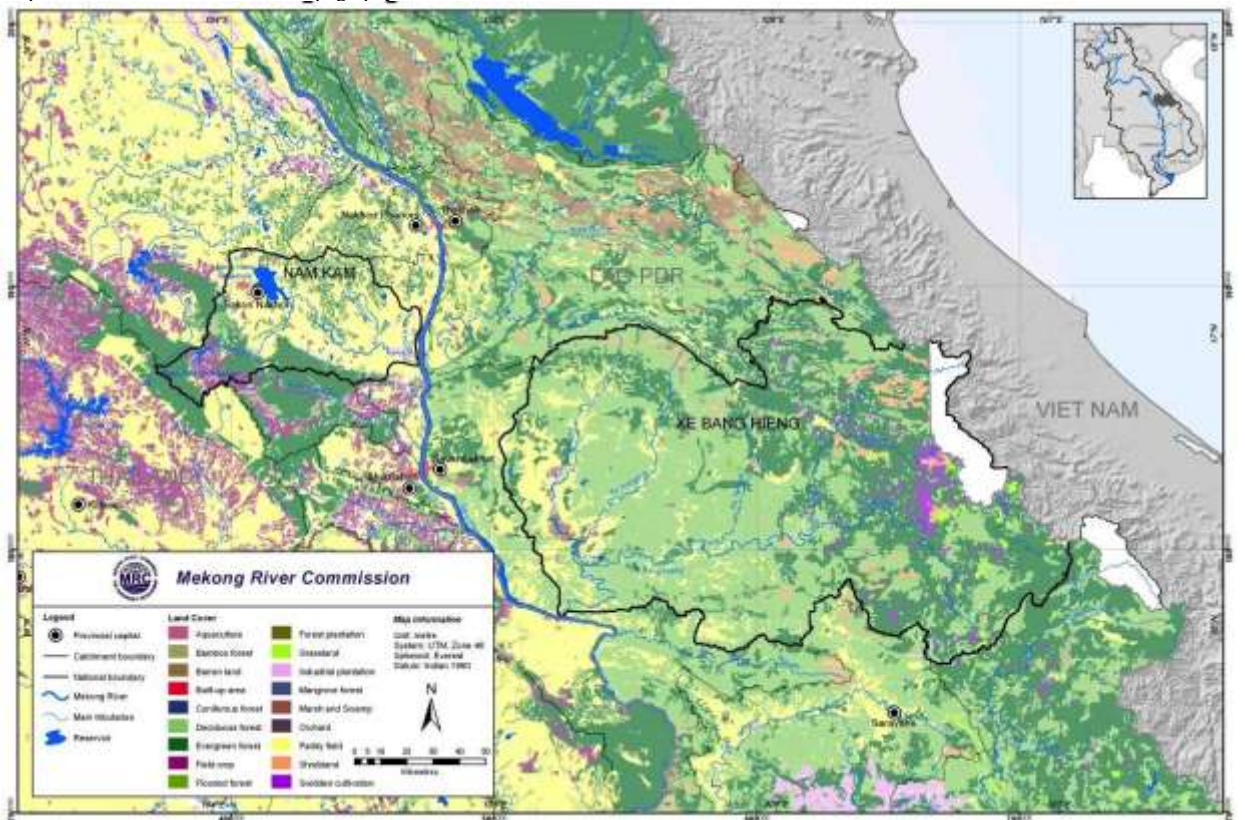
- 1) To submit to the NWRC comments on policies, plans, projects, and solution to any problems or obstacles to the development, utilization, conservation, and any other necessary implementation relating to water resources management as well as any pertinent action of the concerned agencies in river basins;
- 2) To formulate water resources management plans;
- 3) To coordinate the formulation of water resources implementation and budget plans with relevant agencies in river basins to cope up with the plan as mentioned in (2) and budget framework on integrated water resources management;
- 4) To prioritize water allocation and specify water requirements as well as equitable and efficient water allocation measures;
- 5) To monitor and evaluate performance of the agencies relevant to water resources in river basins;
- 6) To promote, support and give advice to the local government regarding beneficial and equitable small scale water resources management;
- 7) To compile statistics, data, comments, and recommendations regarding water resources management in river basins;
- 8) To mediate and reconcile conflicts and solve problems;
- 9) To coordinate with other river basins committee regarding water resources management;
- 10) To conduct public relations, receive comments, and promote understanding among the general public of water resources management;
- 11) To nominate the sub-committee or working groups to handle the tasks as assigned by the river basin committee;
- 12) To undertake other tasks as assigned by the NWRC.

### **Project areas**

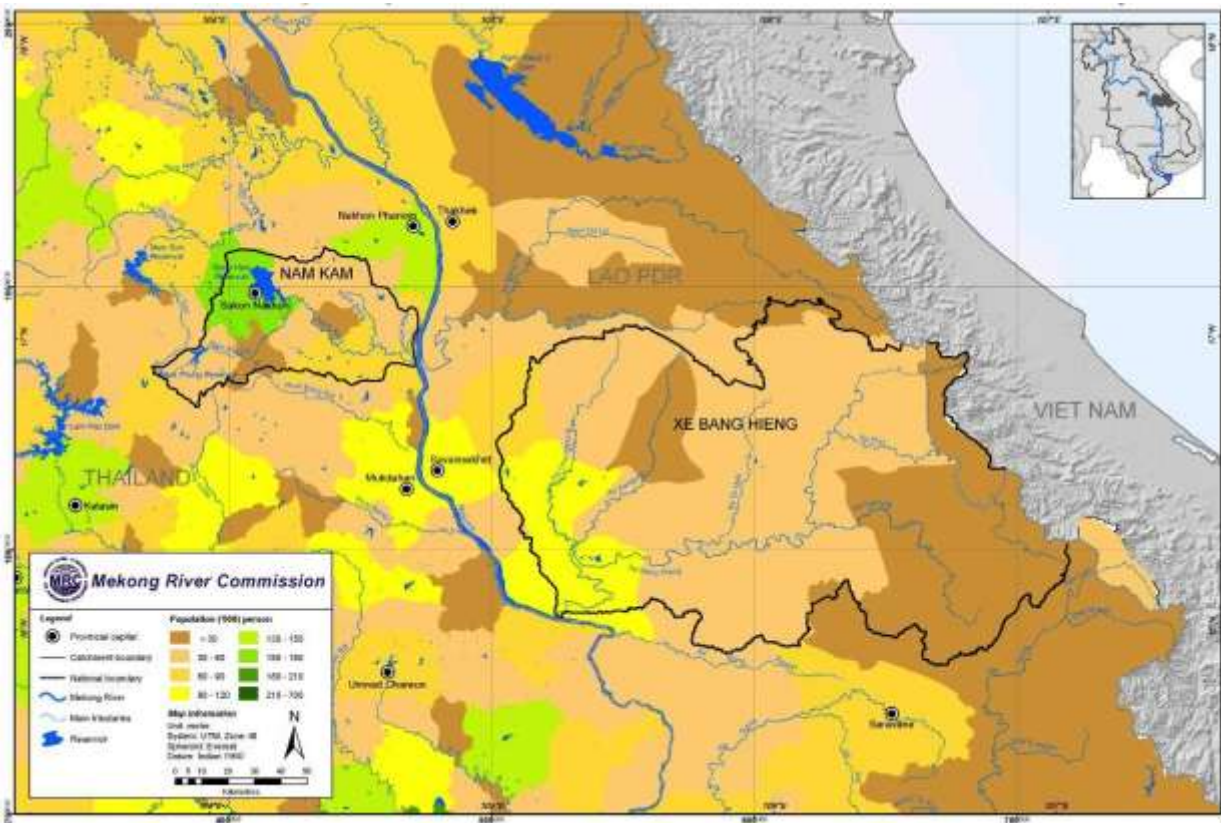
The Xe Bang Hieng basin of Lao PDR and The Nam Kam basin of Thailand are selected to implement this project. Importantly, therefore both basins have very similar institutional arrangements, as well as water resources and IWRM challenges, and both make contributions to the flow and quality in the mainstream Mekong River. The main differences of these two basins are levels of water resources development and conservation of natural resources as well as levels of knowledge and technology. The Xe Bang Hieng basin still has abundance of forestry and natural resources while the Nam Kam basin is almost full developed. This makes them ideal for the exchange of knowledge on establishing local water management institutions, sharing experiences on water resource management, learning implementation of the IWRM and the Procedures of the 1995 Mekong Agreement and applying lessons to sustain their river basin development and management as well as the Mekong River. The following maps are provided for the reader to have an initial understanding of state of the project areas.



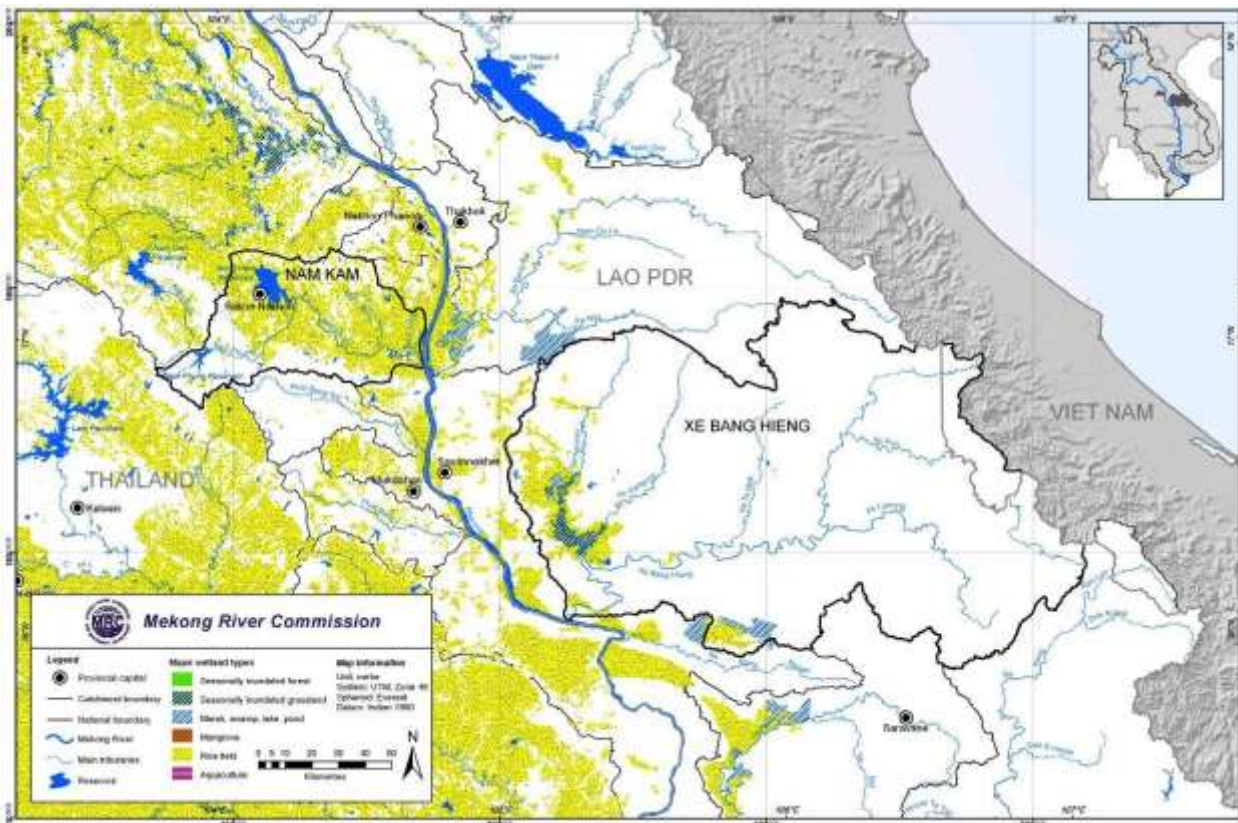
Map 2 River basin boundaries and topography



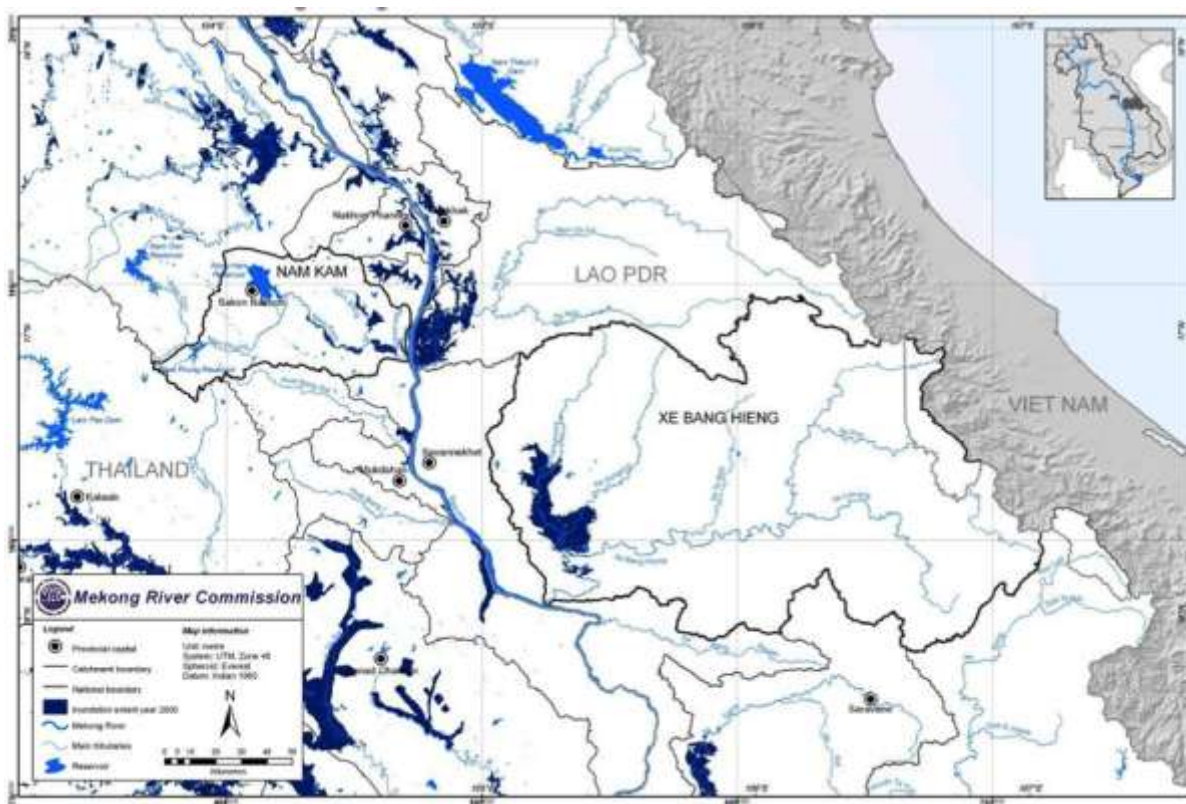
Map 3 Land cover



Map 4 Population 2007-2008



Map 5 Wetlands



Map 6 Max Flood Inundation (Year 2000)

### 2.1.1 Xe Bang Hieng Basin-Lao PDR

The Xe Bang Hieng river basin covers most of Savannakhet Province, flowing from the Lao-Vietnam border to the Mekong at a point about 90 km downstream of Savannakhet. The river has a length of 370 km and a basin area of 19,223 km<sup>2</sup>. Its main tributaries are the Xe Lanong, Xepon, Xethamouk, Xe Xangxoy and Xechamphone. Forest cover is approximately 55% and agricultural land is more than 30%. The mean annual precipitation is 1,600 mm, mean annual discharge is 538 m<sup>3</sup>/s, mean maximum discharge is 4,097 m<sup>3</sup>/s, and a peak flood of 8,500 m<sup>3</sup>/s recorded in 1974. The minimum mean monthly flow is 27 m<sup>3</sup>/s (WREA 2008).

Like other rivers in the region, a large part of the basin has poor water holding geology and resulting low dry season flows. 90% of the annual discharge is in the rainy season and 10% in the dry season. The basin has the second largest population (over 817,000) of the 12 major Lao basins and includes the city of Savannakhet. Irrigation water demand is about 46 m<sup>3</sup>/s, which means that irrigation expansion is very limited by low dry season flows. However, agriculture and irrigation sectors mainly contribute to rural people income in this basin. By comparing expected low flows and the current or future water demands (primarily for irrigation) in various basins it can be seen that the Xe Bang Hieng is likely to have water shortages in the dry season even under current irrigation development levels.



Flooding in Lao PDR may result from seasonal high flows in the Mekong River (inundation of areas along the river and backwater effects in the lower part of the Mekong tributaries), high flows in the Mekong tributaries themselves, and from high local rainfall. Floods from the Mekong typically occur in July, August and September. A large part of the Mekong plain is prone to annual flooding. In particular, areas of the Vientiane plain, Boulikhamsay plain from Pakson to Pakeading, the Xe Bang Fay plain in Khammouane Province, the large plain of the Xe Bang Hieng Basin, and the Xe Done Basin in the area of Saravan and Champasack Provinces. Areas in Attapeu Province along the Xekong and its tributaries may experience flash flooding.

Wetlands provide important ecosystem services and biodiversity havens for the Mekong Basin. The rich biodiversity of fish, crustaceans, amphibians, mollusks, reptiles and plants are heavily utilized in Lao PDR. These aquatic resources play an important role in the livelihoods of the local people in particular in providing sources of protein, especially important to the rural poor. It is reported that wetlands in Lao PDR (whole country) include 60,000 ha of seasonal flooded shrub land, 27,000 ha of permanently flooded swamp forest, and about 120 ha of seasonally flood for forest. Important wetland areas in Lao PDR are the Mekong River Nong Louang, Bung Nong Nyom, Xe Pien, the Khone falls (Xephandon), the Xekong plains, Soukhouns, Nam Theun wetlands (Nakai plateau), and Xechamphone in Xe Bang Hieng river basin. Xechamphone wetland is one of two Ramsar sites in Lao PDR which recently established in September 2010.

### ***2.1.2 Nam Kam Basin-Thailand***

The Nam Kam River, one of the Mekong River's tributaries, is located in Northeast region of Thailand. The catchment's area of the Nam Kam River covers 3,440 km<sup>2</sup> with a total length of 123 km. Nam Kam River originates from Phu Phan Mountains in Sakon Nakorn Province located to the east of Nakhon Panom Province. The river flows through Nhong Harn swamp in Muang District of Sakol Nakorn, streams southeastern toward Na Kae District in Nakhon Panom, and merges with the great Mekong River in Thatpanom District in Nakhon Panom.

Its main tributaries are the Nam Phung, Nam Bang, and Nam Khaen. This area has a tropical monsoon climate with a mean annual rainfall of 1,500 mm. The 80 percent of all annual rain falls during the months from April through September, but rainfall is unreliable and prolonged drought spells are frequent. The average yearly runoff is 1,400 million m<sup>3</sup>. The maximum occurs in September at the rate measured at 394 million m<sup>3</sup> and the minimum in February at 10 million m<sup>3</sup>.

The Nam Kam River is main source of surface water for agriculture in the basin but there is high variation of flow between rainy and dry season. In rainy season, the flood occurs in the downstream part of the Nam Kam River during the high period of water level in the Mekong River. On the other hand, this downstream area often has water shortage problems, particularly in the dry season because of insufficient surface water.

Agricultural land is prevalent in this river basin, especially paddy fields during wet season. Upland crops commonly grown are drought-resistant types e.g. sugar cane, cassava, maize, sorghum, and beans. Vegetables and fruit trees are grown only in areas where water is plentiful and available all year round such as land along the river banks, and downstream

areas of large dams. Common crops are tomato, chili, shallot, garlic, vegetables, papaya, banana, mango, and tamarind (RID, 1999).

Wetlands are an ecological system and productive areas where people may utilize for various purposes in this basin. The important wetland in the Nam Kam river basin is Nong Harn at Muang District, Sakon Nakhon Province. The Nong Han wetland is a large swamp of 130 km<sup>2</sup>, with a depth of 1.9 m on the average. Parts of the area are paddy fields, grass lands, and village communities. There are about 44 species of fishes such as snake head fish, catch fish, etc., and many local birds. Main plants in this area include hyacinth, water lily, water lettuce, etc.

### 3. Programme design

#### Goal and objective

The **Overall Goal** of the project is to “*support pro-poor development, sustainable livelihoods and maintain mainstream of the Mekong River*”.

The **Objective** of the project:

The aim of the transboundary project is to strengthen dialogue between Thailand and Lao PDR in IWRM issues. This is a pilot activity that can benefit the dialogue on other parts of the Mekong basin.

The Objective of the project is

*Enhanced transboundary cooperation between Lao PDR and Thailand and improved river basin management.*

This shall be achieved through strengthened capacity of the RBCs and working groups, effectively use of knowledge and IWRM tools, sharing information, application of MRC procedures and transboundary project implementation and management.

**The initial water and related resources issues for transboundary cooperation and exchange** are identified from transboundary meetings during formulation of the proposal include;

- Wetland management;
- Flood management and
- Sustainable irrigation development.

#### Outcomes, outputs and activities

**Three outcomes** are designed to contribute to the achievement of the Objective including

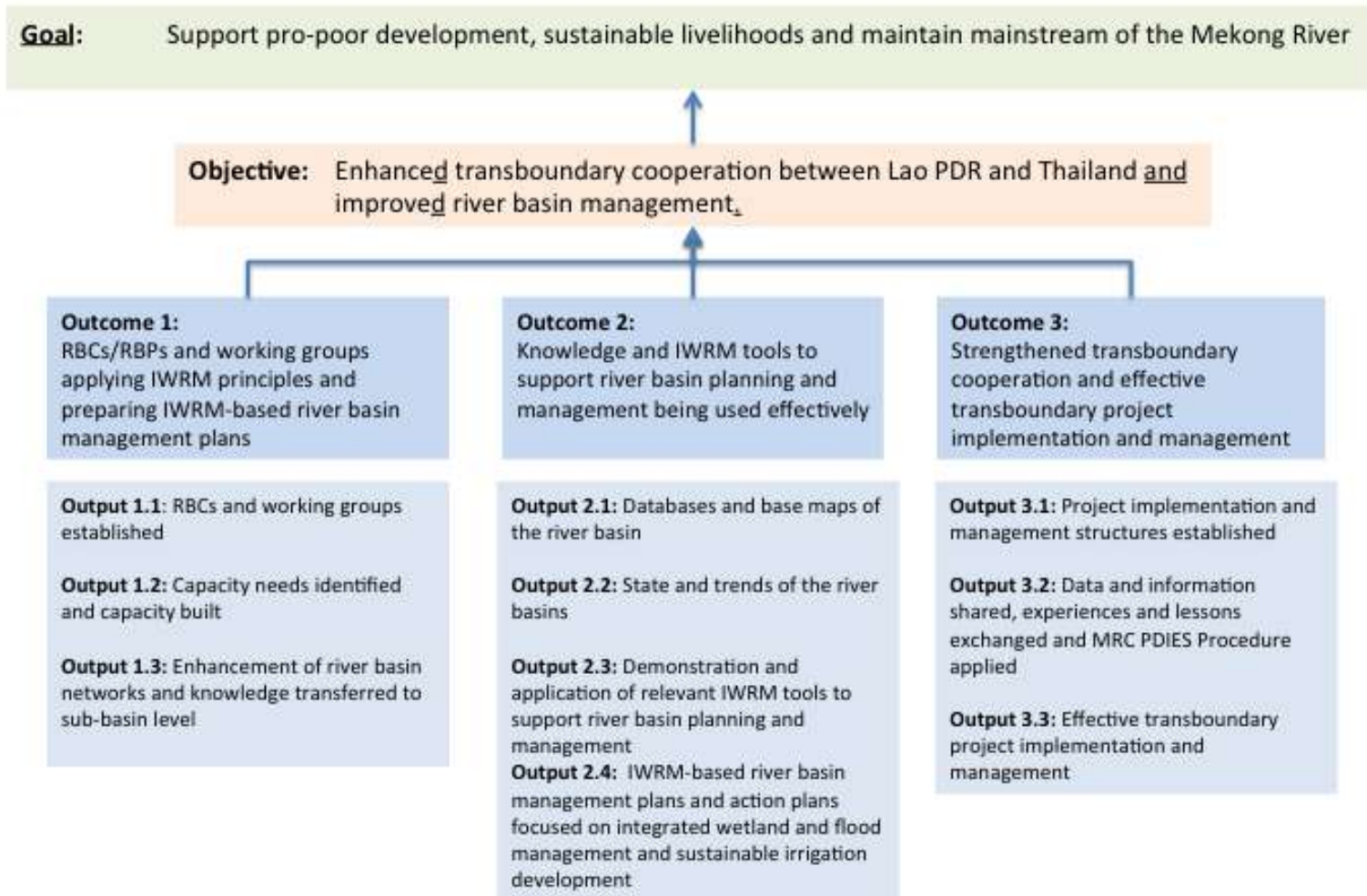
**Outcome 1:** RBCs/RBPs and working groups applying IWRM principles and preparing IWRM-based river basin management plans

**Outcome 2:** Knowledge and IWRM tools to support river basin planning and management being used effectively.

**Outcome 3:** Strengthened transboundary cooperation and effective transboundary project implementation and management

The **Project results chain** is shown in Figure 1. It shows the Outputs that need to be delivered to achieve the three Outcomes, and which collectively will contribute to the project's Objective and contribute to its Goal. Following summarises the outputs and main activities identified as essential to achieve the above three outcomes. The outputs and activities will be detailed and adapted accordingly the inception phase of the project.

Figure 1 Project Result Chain



**Outcome 1: RBCs/RBPs and working groups applying IWRM principles and preparing IWRM-based river basin management plans**

**Output 1.1: RBC/RBPs and working groups established**

*Activities*

- 1.1.1 Establish an initial River Basin Platform (RBP) and working group in the basin.
  - i. Initial survey to understand status, issues, capacity of people and communities in the river basin
  - ii. Promote participation in formulation of RBC
  - iii. Build common understanding on formulation RBC with national line agencies
  - iv. Analyse and evaluate results from above activities
- 1.1.2 Analyse lessons learned from the process of formulation, implementation, and management of existing RBCs/RBPs in the Basin to improve IWRM working principles to put in practice
- 1.1.3 Identify objective, scope, roles and responsibilities of relevant working groups to fit the Basin conditions
- 1.1.4 Establish RBC/RBPs and working groups
- 1.1.5 Establish management committee/Working group for Sub-district/District levels

**Output 1.2: Capacity needs identified and capacity built**

*Activities*

- 1.2.1 Gap analysis and identify capacity needs of RBCs/RBP and working groups in both countries focused on IWRM-based river basin planning and transboundary cooperation issues including wetland management, flood management and irrigation development
- 1.2.2 Prepare road map and action plan to implement capacity building in each river basin
- 1.2.3 Evaluate the previous capacity building and develop the future capacity building plan
- 1.2.4 Link with related stakeholders to strengthen working group understanding of IWRM process to put it into real practices
- 1.2.5 Design the IWRM tools and build capacity to apply at the local areas

**Output 1.3: Enhancement of river basin networks and knowledge transferred to sub-basin level**

*Activities*

- 1.3.1 Establish river basin networks at sub-basin level

- 1.3.2 Build a common understanding and integrated views and needs on river basin planning and management in each country

**Outcome 2: Knowledge and IWRM tools to support river basin planning and management being used effectively.**

**Output 2.1: Databases and base maps of the river basins**

*Activities*

- 2.1.1 Identify purposes of use of data and maps according to collected data, quality, and assurance.
- 2.1.2 Workshop for data analysis.
- 2.1.3 Build databases and base maps
- 2.1.4 Develop a road map to update, maintain and improve database for the future strategies to develop sub-district/villages levels.

**Output 2.2: State and trends of the river basins**

*Activities*

- 2.2.1 Prepare concept note on the pilot areas
- 2.2.2 Analyse data and issues to input to the report

**Output 2.3: Demonstration and application of relevant IWRM tools to support river basin planning and management**

*Activities*

- 2.3.1 Identify relevant IWRM tools to support planning and management in the river basins (Pilot areas)
- 2.3.2 Train and demonstrate how to apply the identified IWRM tools.
- 2.3.3 Apply the identified IWRM tools to support preparation of IWRM based river basin management plans.
- 2.3.4 Setting up learning areas for IWRM through demonstration

**Output 2.4: IWRM-based river basin management plans and action plans focused on integrated wetland and flood management and sustainable irrigation development**

*Activities*

- 2.4.1 Update environmental and eco-social data and information on the development of the Basin relevant IWRM tools
- 2.4.2 Identify and prepare management action plans for integrated wetland, irrigation and flood managements in the sustainable development.

- 2.4.3 Widely consult with relevant stakeholders on the river Basin Management and development.
- 2.4.4 Spawning of conservation areas.

**Outcome 3: Strengthened transboundary cooperation and effective transboundary project implementation and management**

**Output 3.1: Project implementation and management structures established**

*Activities*

- 3.1.1. Design and agree on project implementation and management structures and working principles (Project Internal regulation).
- 3.1.2. Review and improve existing and future mechanisms for effective National and Transboundary coordination and management

**Output 3.2: Data and information shared, experiences and lessons exchanged and MRC PDIES Procedure applied**

*Activities*

- 3.2.1 Apply principles of MRC-Procedures for Data and Information Exchange and Sharing (PDISE) between both river basins
- 3.2.2 Local Data Management workshops/meetings to share experiences and lesson for internal basins
- 3.2.3 Joint Data Management workshops/meetings to exchange experiences and lesson for both basins
- 3.2.4 Transboundary field visits between both river basins
- 3.2.5 Transboundary field visit to other basins
- 3.2.6 National Consultation Workshop on progress of the project implementation.

**Output 3.3: Effective transboundary project implementation and management**

*Activities*

- 3.3.1 Joint Transboundary Annual Reflection Workshop
- 3.3.2 Joint Transboundary Project Evaluation
- 3.3.3 Joint Transboundary consultation meeting for management level

## Approach

**Overall approach** to implement this transboundary project is presented in Figure 3.2. The process to strength capacity of RBCs for selected river basins and planning process could be adapted to fit with their needs of each country regarding to deference levels of capacity, limitation of resources and experiences as well as national policies.

**Integration with other MRC programmes and national activities:** The project implementation will be integrated with other related activities of national and the MRC Programmes particularly M-IWRM project, BDP, EP, FMMP, AIP, and IKMP to enhance coordination and cooperation roles, ensure consistency, and enable cost effectiveness. This approach will avoid duplicate activities and support effective project implementation in the river basins.

**Engagement of key stakeholders:** The key stakeholders such as line agencies, local communities, the credible NGOs, and other organizations at the river basin, national, and regional levels will be identified and pro-active engaged along the planning process to represent their reviews and support project implementation. A key output will be the undertaking of regular reflection workshops where stakeholder satisfaction will provide a strong indication of whether the enhanced stakeholder processes are working effectively.

**Joint learning by doing:** Key achievement of this project is the effectiveness of joint implementation between Lao PDR and Thailand therefore joint learning by doing approach is necessary to improve common understanding and efficiency of joint implantation through sharing information, experiences, and knowledge.

**Promote transboundary cooperation:** The main aim of this project is to enhance transboundary cooperation and demonstrate joint basin planning for river basin management between Lao PDR and Thailand thus continuity identification new areas for transboundary cooperation will be promoted and implemented during joint project operation.



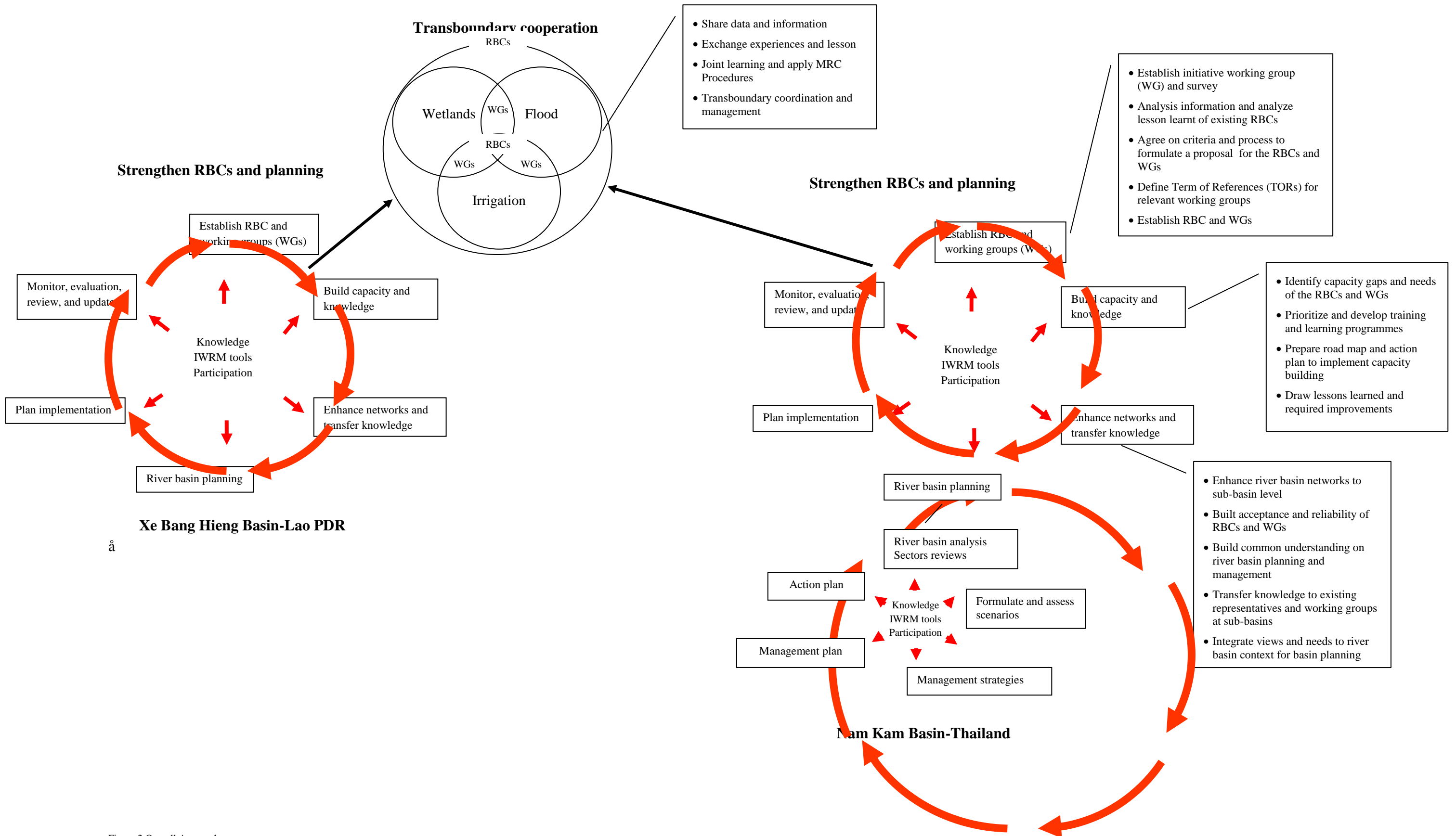


Figure 2 Overall Approach

## 4. Monitoring and Evaluation

**Monitoring and evaluation:** The project implementation will be monitored through the workplan and the progress reports. The performance of the project implementation will be evaluated by indicators regarding to project objectives, outcomes and outputs, together with sources of data as given in the **Design and Monitoring Framework (Annex 1)**. This framework is designed to be consistent with the MRCS M-IWRMP Performance Monitoring and Evaluation Framework – Final Handbook designed for all relevant MRCS Programmes implementation.

The Spreadsheet Database System for the Project Monitoring, Evaluation and Reporting will be developed during the project cycles through a participatory process involving stakeholders. Training will be given to stakeholders. The Monitoring and Evaluation system will be used to monitor progress according to the periodic implementation plans and to evaluate to what extent the project has achieved the objectives for both lake basins.

## 5. Reporting

Reporting will follow the Performance Monitoring and Evaluation Framework – Final Handbook Chapter 3.

All management and progress reports shall be prepared jointly by the two participating countries. The two National Transboundary Consultants of both concerned countries will coordinate the consolidation of the joint periodic reports. The lead editor responsibility of progress reports will rotate between the two concerned countries.

Progress Reports: The Framework requires progress reports as follows:

- Quarterly Activities Reports (QAR);
- Six monthly Outputs Reports (SOR);
- Annual Outcomes Reports (AOR)

Reporting will be against the joint set of Outcomes, Outputs, Activities and indicators-Milestones.

The following project management reports will be produced:

Inception Report: Outlining the confirmed framework, Project Implementation Plan (PIP), implementation mechanisms, procedures, and agreed approach, and updated Design, Monitoring and Evaluation Framework. The agreed Project Document, Joint Single Project Implement Plan and first year detailed tasks and budget planning will constitute the Inception Report.

Final report: To consolidate the progress and achievements of the project and to document the lessons learned from implementation of the transboundary projects.

## 6. Gender Mainstreaming

MRC is committed to gender mainstreaming in all its activities. It is the aim of the MRC to ensure equal opportunities to women and men to be able to fully benefit from water related resources development and the equal participation of women and men in development activities is an important principle for all components.

The project will adhere to these goals and follow the M-IWRMP/MRCS Handbook on Gender Mainstreaming and Poverty Reduction Strategies<sup>2</sup>

## 7. Project implementation arrangements

The implementation of the transboundary project will be characterised by the three following key issues<sup>3</sup>:

- (i) The project implementation will be under the leadership of the two transboundary countries of Lao PDR and Thailand. As stated above, the M-IWRMP PCMU and other relevant MRC Programmes will provide facilitating support whenever needed. This approach may as well be seen as an example for the MRC decentralization process when the MRC countries take a proactive implementation lead of IWRM activities while the MRCS facilitates and provides needed support.
- (ii) The countries and the PCMU will ensure that the transboundary project will be implemented in line with the overall M-IWRM Project aims, objectives and activities. This includes that the relevant MRC Procedures and Technical Guidelines will be fully taken into account when needed and relevant to improve their implementation within the MRC framework on both the national and regional level.
- (iii) The transboundary project will be aligned with the national M-IWRMP activities under WB funding. Therefore, this project will exclusively focus on joint, bilateral and transboundary implementation of water resource management issues and will not duplicate any activities that are already implemented under the national component. However, synergies will be exploited to the highest possible extent.

The transboundary projects are implemented as part of the Mekong IWRM Project, and the management arrangements are aligned with the M-IWRMP procedures.

- *Inception Stage:* In close collaboration with the respective countries, the M-IWRMP will support and facilitate the formulation and finalisation of transboundary project proposals. The M-IWRMP will play a leading formulation role in coordination with respective MRCS Programmes.

---

<sup>2</sup> In draft, the final workshop to endorse this document is scheduled for November 2013

<sup>3</sup> Defined in the Mekong IWRM Project Inception Report, September 2010

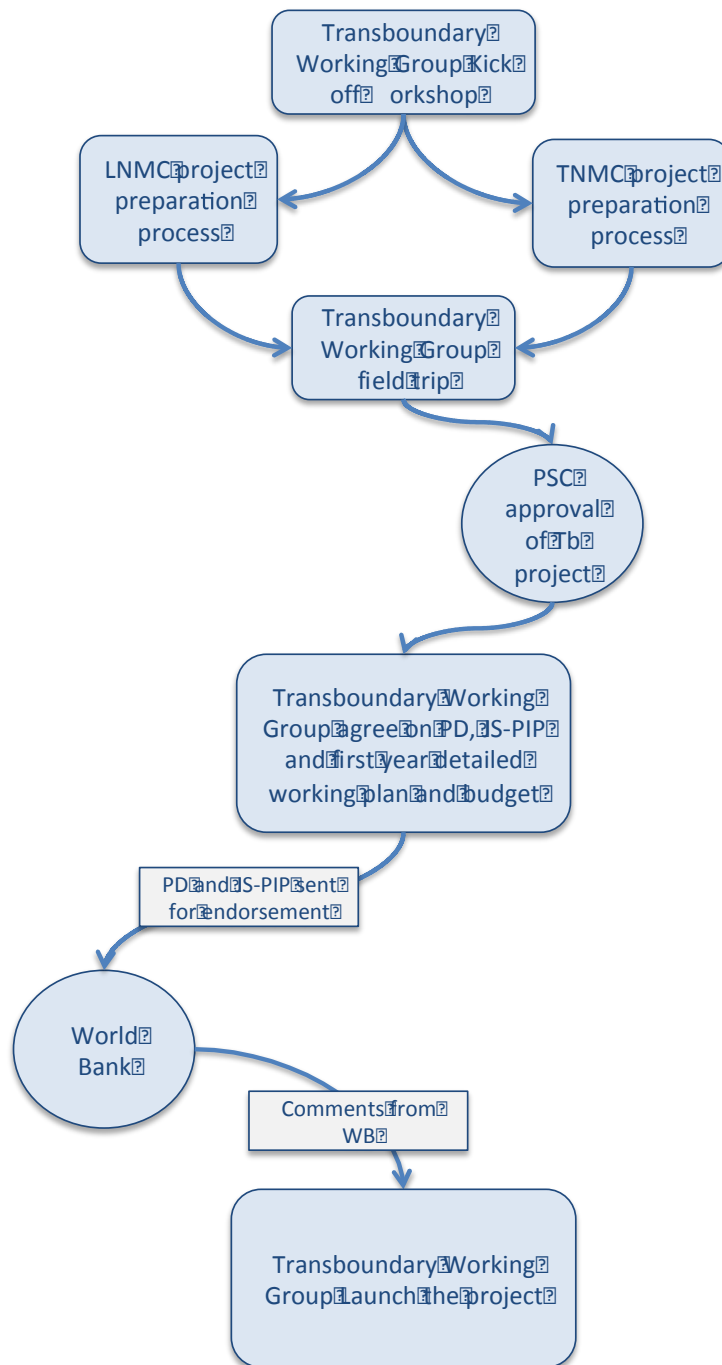
- *Approval:* The transboundary project was approved by the 5<sup>th</sup> PSC meeting of the M-IWRMP. This final agreed PD and JS-PIP will be sent to the WB for comments and advice. The development and approval process is illustrated in figure 9
- *Implementation:* After comment from the WB the M-IWRMP will, in coordination with both countries, organise a project launching and immediately thereafter the implementation of the project will start. The overall fiduciary management responsibilities remain in the MRCS as an executing agency. Technical responsibilities and some procurement responsibilities (e.g. recruitment of the national consultants) will be carried out by the countries as implementing agency.

4

Figure 3: Development and approval process

---

4 The flowchart only shows the overall principles. The actual process involved more details



The project will be implemented at the national level of the two transboundary countries, Lao PDR through River Basin Platforms and working groups and Thailand through River Basin Committees and working groups. The involved institutions are outlined below.

Due to the transboundary character of this project both countries will have to ensure sufficient bilateral exchange to achieve the project objectives in a joint cooperation manner. The designated National M-IWRM Projects Coordinators (e.g. key representatives from

participating NMCs, line agencies, other agencies) need to coordinate and implement activities jointly and ensure effective information as well as expertise exchange. This will be enabled through a transboundary coordination group and through regular working group meetings.

Progress, outcomes and implementation constraints will be reported to the M-IWRMP but Project Steering Committee through M-IWRMP, which meet twice a year. The PSC will provide steering and guidance as needed.

The progress of the project will be assessed through the M-IWRMP but as well the project Monitoring and Evaluation System.

## **National project coordination**

### **Involved Institutions**

#### **Thailand**

TNMC secretariat will act as national coordination unit for Thailand

Nam Kam Working Group will act as the project implementer.

#### **Lao PDR**

LNMC secretariat will assist transboundary coordination and management in coordinating with DWR<sup>5</sup> and other relevant stakeholders at national level.

Division of Natural Resources of Lao PDR will support and manage implementation at provincial level.

Department of National Resources – provincial level is responsible for project implementation.

In addition other relevant line agencies and representatives of the non-government sector of the selected river basins will be involved.

#### **Role of NMC's**

The responsibilities of the NMCs are to facilitate and coordinate with relevant national NMC programmes, line agencies and M-IWRMP on the implementation of the project in their respective country.

---

<sup>5</sup> The mandates of the DWR of Lao PDR and LMCs are under revision and expected to complete in Jan 2012 therefore the appropriate implementation and management structure of this transboundary project of Lao PDR will be reviewed during Inception phase.

### **Role of the line agencies**

The responsibilities of the line agencies are to implement the project. This shall be done in collaboration with respective NMC, the National Transboundary Consultant and local communities and working groups.

### **National Transboundary Consultant**

According to the approved ToR of the National Transboundary Consultant.

### **The role of the M-IWRMP/MRCS**

The M-IWRMP/MRCS will facilitate, coordinate to provide financial and technical supports for the transboundary project implementation.

Technical support, by ensuring linkages to other MRCS activities including inviting other MRCS programmes and/or countries to participate in certain workshops and other events.

Transboundary coordination and cooperation is a crosscutting issue for all the MRCS programmes, and many of them have specific activities in relation to this. The M-IWRMP will ensure technical and financial supports and coordination from such initiatives.

Programmes particularly relevant to this Transboundary project including but not limited to BDP, IKMP, EP, AIP, ICCS, FMMP, and ICBP, ...etc.

### **Transboundary Coordination**

This Transboundary Project aims at enhancing the dialogue between the participating countries. It is therefore imperative that strong emphasis is put on transboundary coordination, both between the respective countries about this transboundary project, but also between this project and other relevant activities in the region.

At a strategic management level the M-IWRMP Steering Committee and Project Management and Coordination Unit will provide the coordination to other transboundary projects and other MRCS programmes. At the implementation level the following transboundary arrangements will be utilised to ensure coordination and exchange of practical experiences.

### **Transboundary Coordination Group (TCG)**

The purpose of this group is to manage this transboundary project. More specifically it is; -to ensure synergy and experience exchange between the two countries involved in this project; - and to facilitate coordination with other projects at the guidance of the M-IWRMP PSC and PCMU. The TCG shall discuss issues arising from the implementation and agree on joint solutions to joint problems.

This group will meet every 6 months, on the invitation of the M-IWRMP. Participation in the group consist of be M-IWRMP, NMC and National Tb Consultants in each respective country and other relevant stakeholders directly involved in the implementation of the project.

The Group will discuss progress and update the rolling one-year action plan. This will include six monthly detailed tasks and budget plan, and indicative annual detailed tasks and budget plan.

The TCG will prepare the Joint Progress Report. The Joint Progress Report will be drafted by the National Tb Consultant for each country, and consolidated into one report before submission to the M-IWRMP. One country will take lead in consolidating the progress report on a rotational basis.

### **Annual Regional Reflection Workshops**

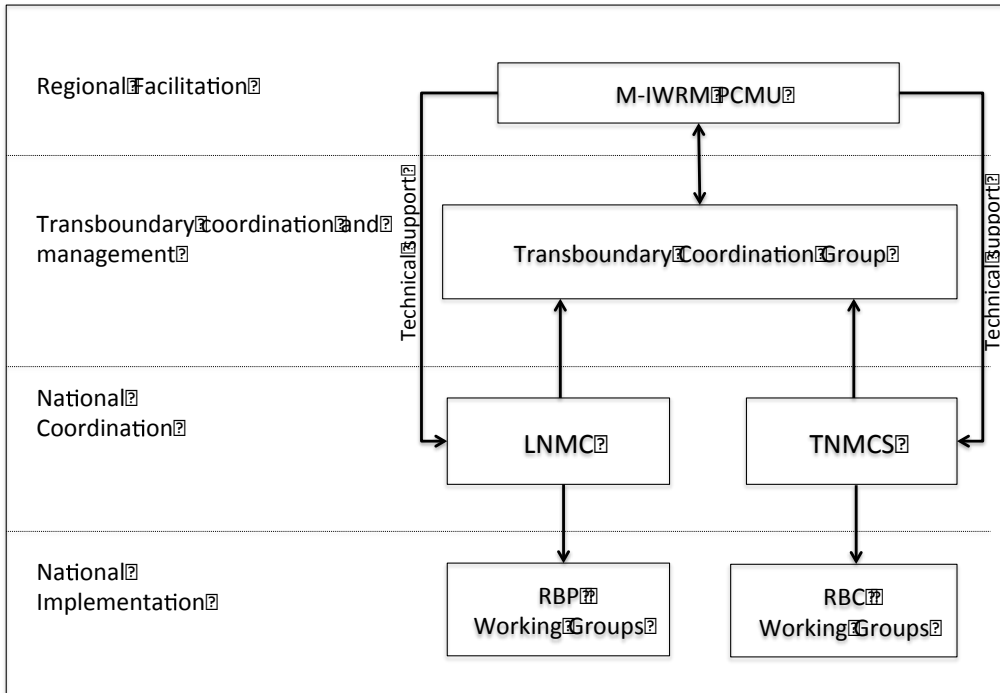
These annual reflection workshops will be organised once a year in the transboundary project areas, and include representatives from all the transboundary projects, and other similar initiatives from other MRC programmes.

The purpose of the workshop is exchange/share the experience and lessons learnt from the project implementation. These lessons learnt will be used for planning and Improvement next years' project implementation.

The meetings will be focussed on a relevant theme relating to transboundary dialogue and they will include participation from the practical implementation level.

Figure 4 Institutional arrangements





### Workplan and milestones

An initiative long-term workplan from 2014-2016 is presented in Table 3 Indicative long-term workplan to ensure that all outputs will be delivered on time with quality assured and proactive engagement of key stakeholders.

A detailed workplan (Project implementation Plan) will be developed during Inception phase. The following table presents key milestones.

Table 2 Key milestones

<b>Year</b>	<b>Key milestones</b>
2014	<ul style="list-style-type: none"> <li>• Initial working groups established</li> <li>• Transboundary coordination and management mechanism established</li> <li>• Inception report</li> <li>• RBCs/RBPs and working groups established</li> <li>• Capacity needs of RBCs/RBPs and working groups identified and a road map of capacity building programme</li> <li>• Base data and maps</li> <li>• Annual knowledge and experience exchanged</li> </ul>
2015	<ul style="list-style-type: none"> <li>• Prioritized capacity building programme delivered</li> <li>• Relevant MRC Procedures demonstrated</li> <li>• State and trends of river basin report 2014</li> <li>• Prioritized IWRM tools demonstrated</li> <li>• Annual knowledge and experience exchanged</li> </ul>
2016	<ul style="list-style-type: none"> <li>• IWRM tools demonstrated (continue)</li> <li>• River basin networks at sub-basin level established and knowledge transferred</li> <li>• Base data and maps updated</li> <li>• Scoping of scenario assessment for IMMR planning</li> <li>• Annual knowledge and experience exchanged</li> <li>• Assessment of scenarios</li> <li>• Relevant MRC Procedures applied</li> <li>• State and trends of river basin report 2016</li> <li>• IWRM-based River basin management strategies and plans for wetlands management, flood management and sustainable irrigation development</li> <li>• Annual knowledge and experience exchanged</li> </ul>

Table 3 Indicative long-term workplan<sup>6</sup>

No	Outcomes/Outputs												
		2014				2015				2016			
		Q1	Q2	Q3	Q4	Q1	Q2	Q3	Q4	Q1	Q2	Q3	Q4
<b>O 1</b>	<b>RBCs/RBPs and working groups applying IWRM principles and preparing IWRM-based river basin management plans</b>												
O 1.1	RBCs and working groups established												
O 1.2	Capacity needs identified and built												
O 1.3	Enhancement of river basin networks and knowledge transferred												
<b>O 2</b>	<b>Knowledge and IWRM tools to support river basin planning and management being used effectively.</b>												
O 2.1	Databases and base maps of the river basin												
O 2.2	State and trends of the river basins												
O 2.3	Demonstration and application of relevant IWRM tools												
O 2.4	IWRM-based river basin management plans and action plans												
<b>O 3</b>	<b>Strengthened transboundary cooperation and effective transboundary project implementation and management</b>												
O 3.1	Project implementation and management structures established												
O 3.2	Data and information shared, experiences and lessons exchanged and MRC PDIES Procedure applied												
O 3.3	Effective transboundary project implementation and management												

<sup>6</sup> Detailed planning has only been done for the first year of implementation. A rolling plan will be updated every 6 months

## 8. Budget

The total budget required to deliver the planned outputs and outcomes for this Transboundary project is as a lumpsum estimated at USD 354,000 for the three years implementation plan (2014-2016). The budget is estimated across the outcomes and outputs as given in Table 4.3.

Funding through the M-IWRMP World Bank grant is expected to be available in beginning of 2014, with the total budget of US\$ 354,000 for a period of 2014-2016. This budget covers the first phase of the project. If other funding becomes available a 2<sup>nd</sup> phase will be implemented. As the nature of this project is such that both countries could justify spending more resources on the implementation it has been agreed, that the available funding will be shared between the two countries with 182,200 USD for Lao and USD 171,800 for Thailand.

Other funding is expected as in-kind contribution of USD 80,000 from the Transboundary Countries (USD 40,000 from Lao PDR and USD 40,000 from Thailand).

Table 4 Budget estimates for Outcomes and Outputs

<b>Outcomes and outputs</b>	<b>World Bank Grant USD</b>
<b>Outcome 1 : RBCs/RBPs and working groups applying IWRM principles and preparing IWRM-based river basin management plans</b>	<b>114,500</b>
2.1.3 Output 1.1 : RBCs/RBPs and Working Groups established.	52,700
2.1.4 Output 1.2 : Capacity needs identified and capacity built.	49,800
2.1.5 Output 1.3 : Enhancement of river basin networks and knowledge transferred to sub-basin level	12,000
<b>Outcome 2: Knowledge and IWRM tools to support river basin planning and management being used effectively.</b>	<b>121,100</b>
2.1.6 Output 2.1 : Databases and base maps of the river basins	24,500
2.1.7 Output 2.2 : State and trends of the river basins	17,500
2.1.8 Output 2.3: Demonstration and application of relevant IWRM tools to support river basin planning and management	45,100
2.1.9 Output 2.4 : IWRM-based river basin management plans and action plans focused on integrated wetland and flood management and sustainable irrigation development	34,000
<b>Outcome 3: Strengthened cooperation and effective transboundary project implementation and management</b>	<b>94,100</b>

2.1.10 Output 3.1: Project implementation and management structures established	18,300
2.1.11 Output 3.2 : Data and information shared, experiences and lessons exchanged and MRC PDIES Procedure applied	41,300
2.1.12 Output 3.3 : Effective transboundary project implementation and management	34,500
<b>Outcome 4 : Programme Management</b>	<b>24,300</b>
<b>Total</b>	<b>354,000</b>

## 9. Financial arrangements:

Management of finances and logistics for the Project implementation will be undertaken by the LNMC and TNMC to be compliance with MRC Administration and Financial manual. One imprest account each will be opened by LNMC and TNMC for disbursement of project funds.

The bank account (a current account) shall be established at an MRC approved bank. The bank account should be named “MRC – (project) – (location)”.

M-IWRMP PCMU of the MRCS will transfer based on the approved JS-PIP. The maximum amount that can be held in the imprest account (ceiling) is 2.5 x the average monthly budget in the JS-PIP year one

The first transfer will be maximum the ceiling amount. Following transfers will be on the basis of expenditure statement from the NMC and will replenish the imprest account to the max ceiling. Monthly imprest accounts report including expenses and possible income for the previous month should be forwarded to the MRCS for replenishment no later than the 5<sup>th</sup> of every month.

The account and the funds shall be managed according to the MRC Finance Manual, particularly Chapter 5 Accounts, Part 1 Imprest Account page 34 to 43.

Only expenses directly related to the approved work plans and the imprest account budget can be charged to the imprest account.

## **10. References**

DWR Thailand (2009). “Role in Thailand’s Water Management.” Department of Water Resources, Bangkok, Thailand.

MRC (2010). “State of the Basin Report 2010.” Mekong River Commission Secretariat, Vientiane, Lao PDR.

MRC M-IWRMP (2009). “Project Document.” Mekong Integrated Water Resources Management Project, Mekong River Commission Secretariat, Vientiane, Lao PDR.

RID (1999). “Nam Kam Basin Development.” Royal Irrigation Department, Bangkok, Thailand.

WREA (2008). “National Water Resources Profile.” Water Resources and Environment Administration, Department of Water Resources, Vientiane, Lao PDR.

WREA (2010). “Decree on Establishment and Activities of River Basin Committee.” Water Resources and Environment Administration, Department of Water Resources, Vientiane, Lao PDR.

# Annexes

## Annex 1) Design and Monitoring Framework

Design summary	Indicators	Source of Data
<b>Project Goal</b>		
Support pro-poor development, sustainable livelihoods and maintain mainstream of the Mekong River	<ul style="list-style-type: none"> <li>• Development and management plans are implemented</li> <li>• Quality of life of local people has improved</li> <li>• Flows at pilot basin outlets is maintained both quantity and quality</li> </ul>	<ul style="list-style-type: none"> <li>• Numbers of implemented projects which formulated from development and management plans</li> <li>• Reports from various institutions assessing the socio-economic in the basin i.e. provincial reports</li> <li>• MRC monitoring reports on quantity and quality of the Mekong mainstream</li> </ul>
<b>Project Objective</b>		

Design summary	Indicators	Source of Data
<p><b>2.1.13</b> Enhanced transboundary cooperation between Lao PDR and Thailand and improved river basin management through strengthen capacity of the RBCs and working groups, effectively uses of knowledge and IWRM tools, application of MRC Procedures, and transboundary project coordination and management</p>	<ul style="list-style-type: none"> <li>• Lao PDR and Thailand has enhanced transboundary cooperation</li> <li>• River basin management has improved</li> </ul>	<ul style="list-style-type: none"> <li>• M-IWRM monitoring and progress reports</li> <li>• Numbers of transboundary cooperation project identified</li> <li>• MOU for cooperation for river basin management</li> <li>• Assessment report of river basin management</li> <li>• Stakeholder survey</li> </ul>
<b>Outcome</b>		
<p><b>Outcome 1:</b> RBCs/RBPs and working groups applying IWRM principles and preparing IWRM-based river basin management plans</p>	<ul style="list-style-type: none"> <li>• Capacity of RBCs and working groups built</li> <li>• RBCs and working groups are accepted by stakeholders</li> <li>• IWRM principles applied in the planning process</li> <li>• plans are accepted and committed to initiative implementation by stakeholders</li> <li>• RBC/RBPs and working groups implement activities by themselves</li> </ul>	<ul style="list-style-type: none"> <li>• Assessment report of training programme</li> <li>• Stakeholder survey</li> <li>• Basin development and management plans</li> <li>• Project and M-IWRM monitoring and progress reports</li> </ul>
<p><b>Outcome 2:</b> Knowledge and IWRM tools to support river basin planning and management being used effectively.</p>	<ul style="list-style-type: none"> <li>• Information and knowledge is updated</li> <li>• Timelines and quality of data, information and analyses delivered for planning</li> <li>• Data is being used in the planning process</li> <li>• IWRM tools are applied in the planning process</li> </ul>	<ul style="list-style-type: none"> <li>• List of data collection</li> <li>• State and trend of basin report</li> <li>• Assessment report of training programme</li> <li>• Scoping report of scenario assessment</li> <li>• Project and M-IWRM monitoring , progress and evaluation reports</li> </ul>



Design summary	Indicators	Source of Data
<p>2.1.14 <b>Outcome 3:</b> Strengthen transboundary cooperation and effective transboundary project coordination and management</p>	<ul style="list-style-type: none"> <li>• Transboundary project coordination and management mechanism and national implementation mechanism are in placed</li> <li>• Data and information are shared</li> <li>• Experiences and lessons exchanged</li> <li>• MRC Procedures are applied at sub-basin level</li> <li>• Transboundary dialogues are effective</li> <li>• Project coordination and management are effective</li> </ul>	<ul style="list-style-type: none"> <li>• TORs of implement and management mechanisms</li> <li>• Procedure for data sharing</li> <li>• Minutes of experiences and lessons exchanged</li> <li>• Minutes of transboundary dialogues</li> <li>• Annual report on MRC procedures implementation</li> <li>• Project and M-IWRM monitoring , progress and evaluation reports</li> <li>• Donor reviews</li> </ul>
<b>Outputs</b>		
<i>Outcome 1 RBCs/RBPs and working groups applying IWRM principles and preparing IWRM-based river basin management plans</i>		
<p><b>Output 1.1</b> RBCs and working groups established</p>	<ul style="list-style-type: none"> <li>• Agreed on TORs of RBC and relevant working groups</li> <li>• Agreed on selection process</li> <li>• RBCs and working groups established</li> <li>• RBCs and working groups recognised</li> </ul>	<ul style="list-style-type: none"> <li>• Minute of meetings</li> <li>• Letters of appointment</li> <li>• Stakeholder survey</li> <li>• Project and M-IWRM monitoring , progress and evaluation reports</li> </ul>
<p><b>Activities</b></p> <p>1.1.1 Establish an initial River Basin Platform (RBP) and working group in the basin.</p> <p>1.1.2. Analyse lessons learned from the process of formulation, implementation, and management of existing RBCs/River Basin Platform in the Basin to improve IWRM working principles to put in practice.</p> <p>1.1.3: Identify objective, scope, roles and responsibilities of relevant working groups to fit the Basin conditions.</p> <p>1.1.4: RBCs/RBP and working groups Meeting</p> <p>1.1.5 Establish management committee/Working group for Sub-district/District levels</p>		
<p><b>Output 1.2</b> Capacity needs indentified and built</p>	<ul style="list-style-type: none"> <li>• Capacity needs identified</li> <li>• Comprehensive road map for capacity building</li> </ul>	<ul style="list-style-type: none"> <li>• Capacity needs assessment report</li> <li>• Tanning assessment report (pre and post)</li> </ul>

Design summary	Indicators	Source of Data
	<ul style="list-style-type: none"> <li>• Priority training programmes delivered</li> <li>• RBCs and working groups contributing and guiding during project implementation</li> <li>• RBCs and working groups contributing and guiding for basin planning and management</li> </ul>	<ul style="list-style-type: none"> <li>• Minute of meetings</li> <li>• Project and M-IWRM monitoring , progress and evaluation reports</li> </ul>
<p><b>Activities</b></p> <p>1.2.1. Gap analysis and identify capacity needs of RBCs/RBP and working groups in both countries focused on IWRM-based river basin planning and transboundary cooperation issues including wetland management, flood management and irrigation development</p> <p>1.2.2. Prepare road map and action plan to implement capacity building in each river basin</p> <p>1.2.3. Evaluate the previous capacity building and develop the future capacity building plan</p> <p>1.2.4. Link with related stakeholders to strengthen working group understanding of IWRM process to put it into real practices</p> <p>1.2.5. Design the IWRM tools to apply at the local areas</p>		
<p><b>Output 1.3</b> Enhancement of river basin networks and knowledge transferred to sub-basin level</p>	<ul style="list-style-type: none"> <li>• 4 river basin networks are engaged</li> <li>• Knowledge is transferred to sub-basin level</li> <li>• Views and needs of sub-basins are integrated into basin context</li> </ul>	<ul style="list-style-type: none"> <li>• Minutes of network meetings</li> <li>• Basin development and management plans</li> <li>• Project and M-IWRM monitoring , progress and evaluation reports</li> </ul>
<p><b>Activities</b></p> <p>1.3.1. Establish river basin networks at sub-basin level</p> <p>1.3.2. Build a common understanding and integrated views and needs on river basin planning and management in each country</p>		
<p>2.1.15 <b>Outcome 2: Knowledge and IWRM tools to support river basin planning and management being used effectively.</b></p>		
<p><b>Output 2.1</b> Databases and base maps of the river basins</p>	<ul style="list-style-type: none"> <li>• Data collection and base maps check list ready</li> <li>• Number of collected data and produced maps according to check list</li> <li>• Quality of data acceptable</li> <li>• Road map to update, maintain and improve database ready</li> </ul>	<ul style="list-style-type: none"> <li>• Report of data quality assured</li> <li>• Project and M-IWRM monitoring , progress and evaluation reports</li> </ul>

Design summary	Indicators	Source of Data
<p><b>Activities</b></p> <p>2.1.1. Identify purposes of use of data and maps according to collected data, quality, and assurance.</p> <p>2.1.2. Workshop for data analysis.</p> <p>2.1.3. Build databases and base maps</p> <p>2.1.4. Develop a road map to update, maintain and improve database for the future strategies to develop sub-district/villages levels.</p>		
<p><b>Output 2.2</b> State and trends of the river basins</p>	<ul style="list-style-type: none"> <li>• Table of content is developed</li> <li>• State and trends of the river basins is published</li> <li>• The report is being used</li> </ul>	<ul style="list-style-type: none"> <li>• Review report</li> <li>• Number references to this report</li> <li>• Project and M-IWRM monitoring , progress and evaluation reports</li> </ul>
<p><b>Activities</b></p> <p>2.2.1. Prepare concept note on the pilot areas</p> <p>2.2.2. Analyse data and issues to input to the report</p>		
<p><b>Output 2.3</b> Demonstration and application of relevant IWRM tools to support river basin planning and management</p>	<ul style="list-style-type: none"> <li>• List of demonstrated IWRM tools is agreed</li> <li>• 25 members of RBOs trained in the use of identified IWRM tools</li> <li>• 5 IWRM tools used in river planning and management</li> </ul>	<ul style="list-style-type: none"> <li>• Minute of meetings</li> <li>• Tanning assessment report (pre and post)</li> <li>• Scenario scoping and assessment report</li> <li>• Project and M-IWRM monitoring , progress and evaluation reports</li> </ul>
<p><b>Activities</b></p> <p>2.3.1. Identify relevant IWRM tools to support planning and management in the river basins (Pilot areas)</p> <p>2.3.2. Train and demonstrate how to apply the identified IWRM tools.</p> <p>2.3.3. Apply the identified IWRM tools to support preparation of IWRM based river basin management plans.</p> <p>2.3.4. Setting up learning areas for IWRM through demonstration</p>		

Design summary	Indicators	Source of Data
<p><b>2.1.16 Output 2.4</b> IWRM-based river basin management plans and action plans focused on integrated wetland and flood management and sustainable irrigation development</p>	<ul style="list-style-type: none"> <li>• Scope of scenario assessment and extent to which assessment results are accepted by stakeholders are agreed</li> <li>• Relevant national agencies, MRC programmes and stakeholders contributes and have ownership of the strategies and plans</li> <li>• Strategies and plans are accepted and committed to implementation by stakeholders</li> </ul>	<ul style="list-style-type: none"> <li>• Scenario scoping and assessment report</li> <li>• Development and management strategies and plans</li> <li>• Stakeholder survey</li> <li>• National project implement reports</li> <li>• Project and M-IWRM monitoring , progress and evaluation reports</li> </ul>
<p><i>Activities</i></p> <p>2.4.1 Update environmental and eco-social data and information on the development of the Basin relevant IWRM tools</p> <p>2.4.2 Identify and prepare management action plans for integrated wetland, irrigation and flood managements in the sustainable development.</p> <p>2.4.3 Widely consult with relevant stakeholders on the river Basin Management and development.</p> <p>2.4.4 Spawning of conservation areas.</p>		
<p><b>2.1.17 Outcome 3: Strengthen transboundary cooperation and effective transboundary project implementation and management</b></p>		
<p><b>Output 3.1</b> Project implementation and management structures established</p>	<ul style="list-style-type: none"> <li>• National implement mechanism established</li> <li>• Transboundary project coordination and management mechanism established</li> <li>• Agreed on working principles</li> </ul>	<ul style="list-style-type: none"> <li>• Inception report</li> <li>• Minute of meetings</li> <li>• Letters of appointment</li> <li>• Project and M-IWRM monitoring , progress and evaluation reports</li> </ul>
<p><i>Activities</i></p> <p>3.1.1. Design and agree on project implementation and management structures and working principles (Project Internal regulation).</p> <p>3.1.2. Review and improve existing and future mechanisms for effective National and Transboundary coordination and management</p>		
<p><b>Output</b> Data and information shared, experiences and lessons exchanged and MRC PDIES Procedure applied</p>	<ul style="list-style-type: none"> <li>• All relevant data and information shared</li> <li>• All relevant issues of experiences and lessons exchanged</li> <li>• Joint learning programmes delivered</li> </ul>	<ul style="list-style-type: none"> <li>• Procedure for data sharing</li> <li>• Minutes of experiences and lessons exchanged</li> <li>• Annual report on MRC procedures implementation</li> <li>• Project and M-IWRM monitoring , progress and evaluation</li> </ul>

Design summary	Indicators	Source of Data
	<ul style="list-style-type: none"> <li>• MRC Procedures applied at sub-basin level</li> </ul>	reports
<p><b>Activities:</b></p> <p>3.2.1. Apply principles of MRC-Procedures for Data and Information Exchange and Sharing (PDISE) between both river basins</p> <p>3.2.2. Local Data Management workshops/meetings to share experiences and lesson for internal basins</p> <p>3.2.3. Joint Data Management workshops/meetings to exchange experiences and lesson for both basins</p> <p>3.2.4. Transboundary field visits between both river basins</p> <p>3.2.5. Transboundary filed visit to other basins</p> <p>3.2.6. National Consultation Workshop on progress of the project implementation.</p>		
<p><b>Output 3.3</b> Effective joint implementation and transboundary dialogues</p>	<ul style="list-style-type: none"> <li>• Cost effective used ??</li> <li>• Transboundary dialogues designed and implemented</li> <li>• Relevant stakeholders engaged</li> </ul>	<ul style="list-style-type: none"> <li>• Minutes of transboundary dialogues</li> <li>• Stakeholder survey</li> <li>• Project and M-IWRM monitoring , progress and evaluation reports</li> <li>• Donor reviews</li> </ul>
<p><b>Activities</b></p> <p>3.3.1. Joint Transboundary Annual Reflection Workshop</p> <p>3.3.2. Joint Transboundary Project Evaluation</p> <p>3.3.3. Joint Transboundary consultation meeting for management</p>		

**Annex 2) List of participants in formulating the project document**

No	Name Surname	Position	Organization
<b>Lao PDR</b>			
1	Mr. Khamphone Buntivong	Deputy of Director General	Office administration Savanhnaket Province
2	Mr Sinouane Siharath	Director	Department of Natural Resources and Environment Savanhnaket Province
	Mr. Khamphanit Vongsa	Deputy of Director General	Department of Natural Resources and Environment Savanhnaket Province
3	Mr. Inpasith Sihalath	Deputy of Division	Department of Natural Resources and Environment Savanhnaket Province
4	Mr. Sing Phachansthy	Technical officer	Division of Irrigation Savanhnaket Province
5	Mr. Khamphoie Vongsa	Deputy of Director General	Department of Natural Resources and Environment Xonbuly district
6	Ms. Keoudon Chounlamontry	Deputy of Director General	Department of Natural Resources and Environment Champhone district
7	Mr. Khamane Tihaphannon	Deputy of Director General	Department of Natural Resources and Environment Songkhon district
8	Mr. Khamphone Buntivong	Deputy of Director General	Office administration Savanhnaket Province
9	Mr Sinouane Siharath	Director	Department of Natural Resources and Environment Savanhnaket Province
10	Mr. Khamphanit Vongsa	Deputy of Director General	Department of Natural Resources and Environment Savanhnaket Province
11	Mr. Inpasith Sihalath	Deputy of Division	Department of Natural Resources and Environment Savanhnaket Province
12	Mr. Sing Phachansthy	Technical officer	Division of Irrigation Savanhnaket Province
13	Mr. Khamphoie Vongsa	Deputy of Director General	Department of Natural Resources and Environment Xonbuly district
14	Ms. Keoudon Chounlamontry	Deputy of Director General	Office of Natural Resources and Environment Champhone district
15	Mr. Khamane Tihaphannon	Deputy of Director General	Department of Natural Resources and Environment Songkhon district
<b>Thailand</b>			
1	Mr. Nipon Monmuangean	Kong Basin Committee	Civil society
2	Mr. Prasart Tongsiri	Member of Nam Kam working group	Civil society
3	Mr. Arkom Akkhanit	Kong Basin Committee	
4	Mr. Naret Kamrisu	Head of office	Nong Sang Sub-district Administrative Organization
5	Mr. Somboon Pumpao	Head of office	Kanlueng sub-district administrative organization
6	Mr. Chokchai Cheaboriboon	Agriculture water user representative	Civil society
7	Dr. Phuwadol Doydee	Lecturer	Kesetsart University Sakon Nakhon
8	Mrs. Pakawan Chufamanee	Director of Bureau of Mekong Basin Management	Department of Water Resource
9	Mr. Burachat Buasuwan	National coordinator of M-IWRMP	Department of Water Resource

10	Mr. Sith Nuthai	Technical officer	Department of Water Resource
11	Mr. Chatchai Ratanachai	National Communication Outreach Consultant	
12	Mr. Sansonthi Boonyothayan	National Transboundary Consultant	
13	Ms. Panporn Suwan	National M-IWRMP Coordinator	Thai National Mekong Committee
14	Mr. Buree Suwanarat	National BDP Specialist	Thai National Mekong Committee
15	Mr. Apichart Hongkawong	Agriculture Water User Representative	Civil Society
16	Mr. Siripong Sirikul	Nam Kam Working Group	Civil Society
17	Mr. Prajya Ngamjan	Lecturer	Kesetsart University Sakon Nakhon
<b>Mekong River Commission Secretariat</b>			
1	Mr. Satit Phirochchai	Director of Planning Division	Mekong River Commission Secretariat
2	Dr. Piriya Uraiwong	M-IWRMO Coordinator	Mekong River Commission Secretariat
3	Dr. Phoumin Han	M-IWRMP Coordinator	Mekong River Commission Secretariat
4	Mr. Vathana Prum	Senior Performance, Monitoring & Evaluation Specialist.	Mekong River Commission Secretariat
5	Mr. Gavin Quibell	M-IWRMP Chief Technical Advisor	Mekong River Commission Secretariat
6	Ms. Oulavanh Sinsamphanh	Junior Riparian Professional	Mekong River Commission Secretariat
7	Mr. Ole Houmøller	International Transboundary Consultant	
8	Dr. Thanaphon Piman	Consultant	

**Annex 3) Final Joint Single Project Planning**

Outcome / Output /Activities	2014				2015				2016				Agreed budget
	Q1	Q2	Q3	Q4	Q1	Q2	Q3	Q4	Q1	Q2	Q3	Q4	
<b>Total for both countries (Lao - Thailand).</b>	12,100	36,200	28,700	40,800	14,000	23,250	18,500	85,500	4,800	13,400	12,750	64,000	354,000
<b>Outcome 1 : RBCs/RBPs and working groups applying IWRM principles and preparing IWRM-based river basin management plans</b>	10,500	20,200	18,800	27,200	5,900	4,100	900	13,150	400	400	400	12,550	114,500
<b>Output 1.1 : RBCs/RBPs and Working Groups established.</b>	10,500	20,200	18,800	400	400	400	400	400	400	400	400	-	52,700
Activity 1.1.1 Establish an initial River Basin Platform (RBP) and working group in the basin.	5,500	12,200	-	-	-	-	-	-	-	-	-	-	17,700
Milestone 1.1.1.1 TOR of working group developed and members of working group selected and officially approved by relevant authorities. (Q1 2014)	5,500	-	-	-	-	-	-	-	-	-	-	-	-
Milestone 1.1.1.2 Workshop organized for members of WG to understand its TOR and assign responsibilities among its members. (Q2 2014)	-	6,500	-	-	-	-	-	-	-	-	-	-	-
Milestone 1.1.1.3 Workshop organized for WG to understand the project, its objectives and expected outputs. (Q2 2014)	-	5,700	-	-	-	-	-	-	-	-	-	-	-



Outcome / Output /Activities	2014				2015				2016				Agreed budget
	Q1	Q2	Q3	Q4	Q1	Q2	Q3	Q4	Q1	Q2	Q3	Q4	
Activity 1.1.2. Analyze lessons learned from the process of formulation, implementation, and management of existing RBCs/RBPs in the Basin to improve IWRM working principles to put in practice.	-	-	4,400	-	-	-	-	-	-	-	-	-	4,400
Milestone 1.1.2.1 WG lessons learnt published (Q3 2014)	-	-	4,400	-	-	-	-	-	-	-	-	-	-
Activity 1.1.3: Identify objective, scope, roles and responsibilities of relevant working groups to fit the Basin conditions.	-	-	14,000	-	-	-	-	-	-	-	-	-	14,000
Milestone 1.1.3.1 Issues Identified (Q3 2014)	-	-	7,000	-	-	-	-	-	-	-	-	-	-
Milestone 1.1.3.2 TOR and Action Plan for WGs developed (Q3 2014)	-	-	7,000	-	-	-	-	-	-	-	-	-	-
Activity 1.1.4: Establish RBCs/RBP and working groups Meeting	2,000	-	400	400	400	400	400	400	400	400	400	-	5,600
Milestone 1.1.4.1 Minutes of Meetings submitted. Every quarter after 2014	2,000	-	400	400	400	400	400	400	400	400	400	-	-
Activity: 1.1.5 Establish management committee/Working group for Sub-district/District levels.	3,000	8,000	-	-	-	-	-	-	-	-	-	-	11,000
Milestone 1.1.5.1.Sub-level water committee established (Q1 2014)	3,000	-	-	-	-	-	-	-	-	-	-	-	-
Milestone 2. Sub-level/area Work Group established (Q2 2014)	-	8,000	-	-	-	-	-	-	-	-	-	-	-
<b>Output 1.2 : Capacity needs identified and capacity built.</b>	-	-	-	24,800	5,000	1,200	-	9,500	-	-	-	9,300	49,800

Outcome / Output /Activities	2014				2015				2016				Agreed budget
	Q1	Q2	Q3	Q4	Q1	Q2	Q3	Q4	Q1	Q2	Q3	Q4	
Activity 1.2.1: Gap analysis and identify capacity needs of RBCs/RBP and working groups in both countries focused on IWRM-based river basin planning and transboundary cooperation issues including wetland management, flood management and irrigation development.	-	-	-	4,800	-	-	-	-	-	-	-	-	4,800
Milestone 1.2.1.1 Capacity Needs Assessment completed of RBC/RBP/WG (Q4 2014)	-	-	-	1,900	-	-	-	-	-	-	-	-	-
Milestone 1.2.1.2 Gap Analysis and Capacity Needed reported (Q4 2014)	-	-	-	2,900	-	-	-	-	-	-	-	-	-
Activity 1.2.2. Prepare road map of action plan to implement capacity building in each river basin	-	-	-	20,000	-	-	-	1,000	-	-	-	1,000	22,000
Milestone 1.2.2.1 Work Plan in Pilot Areas prepared (Q4 2015)	-	-	-	20,000	-	-	-	1,000	-	-	-	1,000	-
Milestone 1.2.2.2 Capacity Development Plan in Pilot Areas prepared (Q4 2015)	-	-	-	-	-	-	-	-	-	-	-	-	-
Activity 1.2.3. Evaluate the previous capacity building and develop the future capacity building plan.	-	-	-	-	-	1,200	-	1,000	-	-	-	1,000	3,200
Milestone 1.2.3.1 Capacity Building Action Plan developed (Q2 2015)	-	-	-	-	-	1,200	-	1,000	-	-	-	1,000	-
Activity 1.2.4 Link with related stakeholders to strengthen working group understanding of IWRM process to put it into real practices	-	-	-	-	2,000	-	-	1,000	-	-	-	1,000	4,000
M:1.2.4.1 Workshop held for related stakeholders and WG (Q1 2015)	-	-	-	-	2,000	-	-	1,000	-	-	-	1,000	-
Activity 1.2.5 Design the IWRM tools to apply at the local areas.	-	-	-	-	3,000	-	-	6,500	-	-	-	6,300	15,800

Outcome / Output /Activities	2014				2015				2016				Agreed budget
	Q1	Q2	Q3	Q4	Q1	Q2	Q3	Q4	Q1	Q2	Q3	Q4	
Milestone 1.2.5.1 Selected Tools applied to Xe Bang Hieng-Nam Kam (Q1 2015)	-	-	-	-	3,000	-	-	6,500	-	-	-	6,300	-
<b>Output 1.3 : Enhancement of river basin networks and knowledge transferred to sub-basin level</b>	-	-	-	2,000	500	2,500	500	3,250	-	-	-	3,250	12,000
Activity 1.3.1: Establish river basin networks at sub-basin level	-	-	-	-	-	2,000	-	2,000	-	-	-	2,000	6,000
Milestone 1.3.1.1 Networks Established (Q2 2015)	-	-	-	-	-	2,000	-	2,000	-	-	-	2,000	-
Activity 1.3.2. Build a common understanding and integrated views and needs on river basin planning and management in each country.	-	-	-	2,000	500	500	500	1,250	-	-	-	1,250	6,000
Milestone 1.3.2.1 Regular planning meetings held with network participation (Q4 2014 and Q1,Q2,Q3 2015)	-	-	-	2,000	500	500	500	1,250	-	-	-	1,250	-
<b>Outcome 2: Knowledge and IWRM tools to support river basin planning and management being used effectively.</b>	-	-	-	1,500	5,500	13,150	11,500	41,350	2,500	10,100	4,250	31,250	121,100
<b>Output 2.1 : Databases and base maps of the river basins</b>	-	-	-	-	-	3,400	-	11,500	-	2,100	-	7,500	24,500
Activity 2.1.1 Identify purposes of use of data and maps according to collected data, quality, and assurance.	-	-	-	-	-	1,400	-	2,000	-	-	-	2,000	5,400
Milestone 2.1.1.1 WG capacitated in use data and map (Q2 2015)	-	-	-	-	-	1,400	-	2,000	-	-	-	2,000	-
Activity 2.1.2 Workshop for data analysis.	-	-	-	-	-	2,000	-	2,000	-	-	-	2,000	6,000
Milestone 2.1.2.1 Workshop organised for RBC/RBP/WG and focal point (Q2 2015)	-	-	-	-	-	2,000	-	2,000	-	-	-	2,000	-
Activity 2.1.3 Build databases and base maps	-	-	-	-	-	-	-	6,000	-	-	-	2,000	8,000

Outcome / Output /Activities	2014				2015				2016				Agreed budget
	Q1	Q2	Q3	Q4	Q1	Q2	Q3	Q4	Q1	Q2	Q3	Q4	
Milestone 2.1.3.1 Database and base maps completed (Q4 2015)	-	-	-	-	-	-	-	6,000	-	-	-	2,000	-
Activity 2.1.4 Develop a road map to update, maintain and improve database for the future strategies to develop sub-district/villages levels.	-	-	-	-	-	-	-	1,500	-	2,100	-	1,500	5,100
Milestone 2.1.4.1 Database Management Plan developed (Q2 2016)	-	-	-	-	-	-	-	1,500	-	2,100	-	1,500	-
<b>Output 2.2 : State and trends of the river basins</b>	-	-	-	-	-	5,750	-	5,000	-	-	1,750	5,000	17,500
Activity 2.2.1 Prepare concept note on the pilot areas.	-	-	-	-	-	5,000	-	2,500	-	-	1,000	2,500	11,000
Milestone 2.2.1.1 Work plan and goal in pilot areas prepared (Q2 2015)	-	-	-	-	-	5,000	-	2,500	-	-	-	2,500	-
Milestone 2.2.1.2. Lesson learnt from pilot areas prepared (Q3 2016)	-	-	-	-	-	-	-	-	-	-	1,000	-	-
Activity 2.2.2 Analyse data and issues to input to the report.	-	-	-	-	-	750	-	2,500	-	-	750	2,500	6,500
Milestone 2.2.2.1 Draft report prepared (Q2 2015 and Q3 2016)	-	-	-	-	-	750	-	2,500	-	-	750	2,500	-
<b>Output 2.3: Demonstration and application of relevant IWRM tools to support river basin planning and management</b>	-	-	-	-	-	-	11,500	16,100	2,500	2,500	2,500	10,000	45,100
Activity 2.3.1 Identify relevant IWRM tools to support planning and management in the river basins (Pilot areas).	-	-	-	-	-	-	5,000	3,500	-	-	-	3,500	12,000
Milestone 2.3.1.1 IWRM tools identified for each pilot area (Q3 2015)	-	-	-	-	-	-	5,000	3,500	-	-	-	3,500	-
Activity 2.3.2 Train and demonstrate how to apply the identified IWRM tools.	-	-	-	-	-	-	6,500	2,000	-	-	-	2,000	10,500

Outcome / Output /Activities	2014				2015				2016				Agreed budget
	Q1	Q2	Q3	Q4	Q1	Q2	Q3	Q4	Q1	Q2	Q3	Q4	
Milestone 2.3.2.1 Workshop organised for basin WG (Q3 2015 and Q2 2016)	-	-	-	-	-	-	6,500	2,000	-	-	-	2,000	-
Activity 2.3.3 Apply the identified IWRM tools to support preparation of IWRM based river basin management plans.	-	-	-	-	-	-	-	4,500	2,500	2,500	2,500	2,000	14,000
Milestone 2.3.3.1 IWRM tools applied in River Basin and Pilot Areas (Quarterly from Q4 2015)	-	-	-	-	-	-	-	4,500	2,500	2,500	2,500	2,000	-
Activity 2.3.4 Setting up learning areas for IWRM through demonstration.	-	-	-	-	-	-	-	6,100	-	-	-	2,500	8,600
Milestone 2.3.4.1 Learning areas established in river basin and pilot areas (Q4 2016)	-	-	-	-	-	-	-	6,100	-	-	-	2,500	-
<b>Output 2.4 : IWRM-based river basin management plans and action plans focused on integrated wetland and flood management and sustainable irrigation development</b>	-	-	-	1,500	5,500	4,000	-	8,750	-	5,500	-	8,750	34,000
Activity 2.4.1. Update environmental and eco-social data and information on the development of the Basin relevant IWRM tools.	-	-	-	-	-	1,500	-	1,500	-	-	-	1,500	4,500
Milestone 2.4.1.1 Database updated (Q2 2015)	-	-	-	-	-	1,500	-	1,500	-	-	-	1,500	-
Activity 2.4.2 Identify and prepare management action plans for integrated wetland, irrigation and flood managements in the sustainable development.	-	-	-	-	-	-	-	5,000	-	5,500	-	5,000	15,500
Milestone 2.4.2.1 Work plan for pilot area Implemented (T) (Q2 2016)	-	-	-	-	-	-	-	5,000	-	5,500	-	5,000	-
Milestone 2.4.2.2 Management and development plan prepared (L) (Q2 2016)	-	-	-	-	-	-	-	-	-	-	-	-	-
Activity 2.4.3 Widely consult with relevant stakeholders on the river Basin Management and development.	-	-	-	-	3,000	-	-	1,500	-	-	-	1,500	6,000

Outcome / Output /Activities	2014				2015				2016				Agreed budget
	Q1	Q2	Q3	Q4	Q1	Q2	Q3	Q4	Q1	Q2	Q3	Q4	
Milestone 2.4.3.1 Workshop held with all stakeholders (Q1 2015)	-	-	-	-	3,000	-	-	1,500	-	-	-	1,500	-
Activity 2.4.4 Spawning of conservation areas.	-	-	-	1,500	2,500	2,500	-	750	-	-	-	750	8,000
Milestone 2.4.4.1 Conservation areas suitable for spawning selected (Q4 2014)	-	-	-	1,500	2,500	500	-	750	-	-	-	750	-
Milestone 2.4.4.2 Capacity building for local population (Q4 2015)	-	-	-	-	-	2,000	-	-	-	-	-	-	-
<b>Outcome 3: Strengthened cooperation and effective transboundary project implementation and management</b>	-	12,400	8,300	10,500	1,000	4,400	4,500	27,900	300	1,300	6,500	17,000	94,100
<b>Output 3.1: Project implementation and management structures established</b>	-	10,000	8,300	-	-	-	-	-	-	-	-	-	18,300
Activity 3.1.1. Design and agree on project implementation and management structures and working principles (Project Internal regulation).	-	10,000	-	-	-	-	-	-	-	-	-	-	10,000
Milestone 3.1.1.1 Project management plan developed and agreed (Q2 2014)	-	10,000	-	-	-	-	-	-	-	-	-	-	-
Activity 3.1.2 Review and improve existing and future mechanisms for effective National and Transboundary coordination and management	-	-	8,300	-	-	-	-	-	-	-	-	-	8,300
Milestone 3.1.2.1 Mechanisms of line of communication and coordination in the basin agreed (Q3 2014)	-	-	8,300	-	-	-	-	-	-	-	-	-	-
<b>Output 3.2 : Data and information shared, experiences and lessons exchanged and MRC PDIES Procedure applied</b>	-	2,400	-	4,700	1,000	4,400	2,000	16,450	300	1,300	4,000	4,750	41,300
Activity 3.2.1 Apply principles of MRC-Procedures for Data and Information Exchange and Sharing (PDIES) between both river basins	-	-	-	-	-	-	2,000	1,300	300	300	300	1,000	5,200

Outcome / Output /Activities	2014				2015				2016				Agreed budget
	Q1	Q2	Q3	Q4	Q1	Q2	Q3	Q4	Q1	Q2	Q3	Q4	
Milestone 3.2.1.1 Data sharing procedures and types of data agreed (Q3 2015)	-	-	-	-	-	-	2,000	1,000	-	-	-	1,000	-
Milestone 3.2.1.2 Data shared on regular basis (quarterly from Q4 2015)	-	-	-	-	-	-	-	300	300	300	300	-	-
Activity 3.2.2 Local Data Management workshops/meetings to share experiences and lesson for internal basins	-	-	-	-	1,000	-	-	1,000	-	1,000	1,000	1,000	5,000
Milestone 3.2.2.1 Experiences exchanged between sub-river basins (Q1 2015 and Q2 2016)	-	-	-	-	1,000	-	-	1,000	-	1,000	1,000	1,000	-
Activity 3.2.3 Joint Data Management workshops/meetings to exchange experiences and lesson for both basins.	-	-	-	-	-	3,500	-	1,000	-	-	-	1,000	5,500
Milestone 3.2.3.1 Experiences exchanged between river basins (Q2 2015)	-	-	-	-	-	3,500	-	1,000	-	-	-	1,000	-
Activity 3.2.4 Transboundary field visits between both river basins	-	-	-	3,800	-	-	-	3,300	-	-	1,800	-	8,900
Milestone 3.2.4.1 Field Visit to river basin completed (Q4 2014, Q3 2015, Q3 2016)	-	-	-	3,800	-	-	-	3,300	-	-	1,800	-	-
Activity 3.2.5 Transboundary field visits to other basins.	-	-	-	-	-	-	-	8,200	-	-	-	1,000	9,200
Milestone 3.2.5.1 Field visit to external basin completed (Q4 2015)	-	-	-	-	-	-	-	8,200	-	-	-	1,000	-
Activity 3.2.6 National Consultation Workshop on progress of the project implementation	-	2,400	-	900	-	900	-	1,650	-	-	900	750	7,500
Milestone 3.2.6.1 Bi-annual Workshop completed (Q2 2014 to Q4 2016)	-	2,400	-	900	-	900	-	1,650	-	-	900	750	-
<b>Output 3.3 : Effective transboundary project implementation and management</b>	-	-	-	5,800	-	-	2,500	11,450	-	-	2,500	12,250	34,500

Outcome / Output /Activities	2014				2015				2016				Agreed budget
	Q1	Q2	Q3	Q4	Q1	Q2	Q3	Q4	Q1	Q2	Q3	Q4	
Activity 3.3.1 Joint Transboundary Annual Reflection Workshop.	-	-	-	4,000	-	-	-	4,950	-	-	-	3,750	12,700
Milestone 3.3.1.1 Joint TB workshop held (Q4 every year)	-	-	-	4,000	-	-	-	4,950	-	-	-	3,750	-
Activity 3.3.2 Joint Transboundary Project Evaluation.	-	-	-	1,800	-	-	-	3,000	-	-	-	5,000	9,800
Milestone 3.3.2.1 Joint Evaluation Report prepared (Q4 2015, Q4 2016)	-	-	-	1,800	-	-	-	3,000	-	-	-	5,000	-
Activity 3.3.3 Joint Transboundary consultation meeting for management level.	-	-	-	-	-	-	2,500	3,500	-	-	2,500	3,500	12,000
Milestone 3.3.3.1 Meeting organised for senior management (Q3 2015, Q3 2016)	-	-	-	-	-	-	2,500	3,500	-	-	2,500	3,500	-

<b>Programme Management</b>	<b>1,600</b>	<b>3,600</b>	<b>1,600</b>	<b>1,600</b>	<b>1,600</b>	<b>1,600</b>	<b>1,600</b>	<b>3,100</b>	<b>1,600</b>	<b>1,600</b>	<b>1,600</b>	<b>3,200</b>	<b>24,300</b>
Xe Bang Hieng-Nam Kam Activities well managed	1,600	3,600	1,600	1,600	1,600	1,600	1,600	3,100	1,600	1,600	1,600	2,900	24,000
Activity 4.1.1 Strengthen administrative management	700	2,700	700	700	700	700	700	2,200	700	700	700	2,200	13,400
Milestone 4.1.1.1 Financial Management procedures agreed (Q2 2014)	700	2,700	700	700	700	700	700	2,200	700	700	700	2,200	-
Activity 4.1.2 Conduct the Project Monitoring and evaluation. Quarterly Activities Progress Reports; Six Monthly Outputs Progress Report; Annual Outcome Progress Report; Internal Reports (Baseline and Completion reports);	900	900	900	900	900	900	900	900	900	900	900	700	10,600
Milestone 4.1.2.1 Progress Reports submitted (very quarter)	900	900	900	900	900	900	900	900	900	900	900	700	-



Outcome / Output /Activities	2014				2015				2016				Agreed budget
	Q1	Q2	Q3	Q4	Q1	Q2	Q3	Q4	Q1	Q2	Q3	Q4	
Project documentation	-	-	-	-	-	-	-	-	-	-	-	300	300
Activity 4.2.1 Media publication.	-	-	-	-	-	-	-	-	-	-	-	300	300
Milestone 4.2.1.1 Final Report submitted (Q4 2016)	-	-	-	-	-	-	-	-	-	-	-	300	-
Total for Thailand NMC	1,400	13,000	15,000	29,600	13,300	22,550	17,800	25,800	4,100	12,700	12,050	4,500	171,800
Total for Lao PDR NMC	10,700	23,200	13,700	11,200	700	700	700	59,700	700	700	700	59,500	182,200

**Annex 4) Detailed Activities / Milestones / Tasks & Budget planning for first year (2014, Thailand)**

Total for Thailand	Country	Implementers	2014			
			Q1	Q2	Q3	Q4
			1,400	13,000	15,000	29,600
<b>Outcome 1 : RBCs/RBPs and working groups applying IWRM principles and preparing IWRM-based river basin management plans</b>			500	9,200	12,800	22,700
<b>Output 1.1 : RBCs/RBPs and Working Groups established.</b>			500	9,200	12,800	400
Activity 1.1.1 Establish an initial River Basin Platform (RBP) and working group in the basin.	Thailand		500	4,200	-	-
Milestone 1.1.1.1 TOR of working group developed and members of working group selected and officially approved by relevant authorities. (Q1 2014)			500	-	-	-
Task 1.Draft transboundary project working group(TBWG) TOR and consult with Nam Kam Working group		RBC,DW R,NGOs, Civil society	500			
Task 2.Agree on TOR of TBWG		RBC,DW R,NGOs, Civil society	-			
Task 3.TBWG Establishment		DWR,RB C	-			
Milestone 1.1.1.2 Workshop organized for members of WG to understand its TOR and assign responsibilities among its members. (Q2 2014)			-	1,500	-	-

Total for Thailand	Country	Implementers	2014			
			Q1	Q2	Q3	Q4
Task 1.Preparation for Nam Kam Working group workshop, Cooperate with related line agencies in Nam Kam River Basin		RBC,DW R,NGOs, Civil society		500		
Task 2.Nam Kam Working group workshop to make understanding scope of project and select volunteer persons		RBC,DW R,NGOs, Civil society		500		
Task 3.Nam Kam Working group workshop to prepare TOR of TBWG		RBC,DW R, NGOs, Civil society		500		
Milestone 1.1.1.3 Workshop organized for WG to understand the project, its objectives and expected outputs. (Q2 2014)			-	2,700	-	-
Task 1.Organize the 1st workshop at Mueang District, Sakon Nakorn Province to understand the project area (issues, livelihood, opportunities, etc.) ,objective and expected output		TBWG ,related network		900		
Task 2.Organize the 2nd workshop at Nakae District ,Nakhon Phanom Province to understand the project area (issues, livelihood, opportunities, etc.) ,objective and expected output		TBWG, related network		900		
Task 3.Organize the 3rd workshop at Thard Phanom District, Nakorn Phanom Province to understand the project area (issues, livelihood, opportunities, etc.) ,objective and expected output		TBWG, related network		900		
Activity 1.1.2. Analyze lessons learned from the process of formulation, implementation, and management of existing RBCs/RBPs in the Basin to improve IWRM working principles to put in practice.	Thailand		-	-	1,400	-

Total for Thailand	Country	Implementers	2014			
			Q1	Q2	Q3	Q4
Milestone 1.1.2.1 WG lessons learnt published (Q3 2014)			-	-	1,400	-
Task 1.Draft summary lesson learnt from three workshops		National consultant			400	
Task 2.Organize the workshop to consider Draft summary lesson learnt report		TBWG			600	
Task 3.Finalize summary lesson learnt report		National consultant			400	
Activity 1.1.3: Identify objective, scope, roles and responsibilities of relevant working groups to fit the Basin conditions.	Thailand		-	-	11,000	-
Milestone 1.1.3.1 Issues Identified (Q3 2014)			-	-	5,500	-
Task 1.Organize the workshop in 15 sub-districts to understand the project area (issues, livelihood, opportunities, etc.) ,objective and expected output		TBEG, related network			4,500	
Task 2.Organize Summary workshop of 15 sub-districts		TBEG, National consultant, related network			1,000	
Milestone 1.1.3.2 TOR and Action Plan for WGs developed (Q3 2014)			-	-	5,500	-

Total for Thailand	Country	Implementers	2014			
			Q1	Q2	Q3	Q4
Task 1.Organize the workshop in 15 sub-district to identify TOR and Action Plan		TBEG, related network			4,500	
Task 2.Organize Summary workshop of 15 sub-districts		TBEG, National consultant, related network			1,000	
Task 3.Organize workshop to formulate sub-district working structure in 15 sub-districts						
Activity 1.1.4: Establish RBCs/RBP and working groups Meeting	Thailand		-	-	400	400
Milestone 1.1.4.1 Minutes of Meetings submitted. Every quarter after 2014			-	-	400	400
Task 1.TBWG Meeting to follow up progress of the project					400	400
Task 2.Preparing quarterly report						
Activity: 1.1.5 Establish management committee/Working group for Sub-district/District levels.	Thailand		-	5,000	-	-
Milestone 1.1.5.1.Sub-level water committee established (Q1 2014)			-	-	-	-
Task 1.Sub-district working group establishment						

Total for Thailand	Country	Implementers	2014			
			Q1	Q2	Q3	Q4
Milestone 2. Sub-level/area Work Group established (Q2 2014)		(THAILAND)	-	5,000	-	-
Task 1.Sub-district working group establishment				5,000		
Output 1.2 : Capacity needs identified and capacity built.			-	-	-	21,800
Activity 1.2.1: Gap analysis and identify capacity needs of RBCs/RBP and working groups in both countries focused on IWRM-based river basin planning and transboundary cooperation issues including wetland management, flood management and irrigation development.	Thailand		-	-	-	1,800
Milestone 1.2.1.1 Capacity Needs Assessment completed of RBC/RBP/WG (Q4 2014)			-	-	-	400
Task 1.TBWG Meeting to analyze outputs from sub-district level (Will be reviewed implementation out next year)		TBWG				400

Total for Thailand	Country	Implementers	2014			
			Q1	Q2	Q3	Q4
Milestone 1.2.1.2 Gap Analysis and Capacity Needed reported (Q4 2014)			-	-	-	1,400
Task 1.TBWG workshop to formulate capacity building activities to fill gap		TBWG				400
Task 2.Consultation with sub-district working group to confirm capacity need		TBWG,Su b-district WG representat ives				1,000
Activity 1.2.2. Prepare road map of action plan to implement capacity building in each river basin	Thailand		-	-	-	20,000
Milestone 1.2.2.1 Work Plan in Pilot Areas prepared (Q4 2015)			-	-	-	20,000
Task 1.Consultation with sub-district WG to inform capacity need and prepare work plan in pilot areas						4,500
Task 2.Implementation of capacity building in pilot areas						15,500
Milestone 1.2.2.2 Capacity Development Plan in Pilot Areas prepared (Q4 2015)			-	-	-	-

Total for Thailand	Country	Implementers	2014			
			Q1	Q2	Q3	Q4
Activity 1.2.3. Evaluate the previous capacity building and develop the future capacity building plan.	Thailand		-	-	-	-
Milestone 1.2.3.1 Capacity Building Action Plan developed (Q2 2015)			-	-	-	-
Task 1.TBWG Workshop to evaluate implemented capacity building in pilot areas		TBWG				
Task 2.Formulate capacity building action plan based on evaluation of pilot areas		TBWG				
Activity 1.2.4 Link with related stakeholders to strengthen working group understanding of IWRM process to put it into real practices	Thailand		-	-	-	-
M:1.2.4.1 Workshop held for related stakeholders and WG (Q1 2015)			-	-	-	-
Task 1.Conducted workshop to share experience of IWRM implementation in project areas with stakeholders and WG						
Activity 1.2.5 Design the IWRM tools to apply at the local areas.	Thailand		-	-	-	-



Total for Thailand	Country	Implementers	2014			
			Q1	Q2	Q3	Q4
Milestone 1.2.5.1 Selected Tools applied to Xe Bang Hieng / Nam Kam (Q1 2015)			-	-	-	-
<b>Task 1.Data collection in pilot areas</b>		TBWG				
Task 2.Questionnaire to fulfill data and information						
<b>Output 1.3 : Enhancement of river basin networks and knowledge transferred to sub-basin level</b>			-	-	-	500
Activity 1.3.1: Establish river basin networks at sub-basin level	Thailand		-	-	-	-
Milestone 1.3.1.1 Networks Established (Q2 2015)			-	-	-	-
Task 1.Nam Kam IWRM Forum		sub-basin WG in 3T sub-area				
Activity 1.3.2. Build a common understanding and integrated views and needs on river basin planning and management in each country.	Thailand		-	-	-	500
Milestone 1.3.2.1 Regular planning meetings held with network participation (Q4 2014 and Q1,Q2,Q3 2015)			-	-	-	500

Total for Thailand	Country	Implementers	2014			
			Q1	Q2	Q3	Q4
Task 1.Meeting to share experience and work progress in project area		TBWG, Related line agencies				500
<b>Outcome 2: Knowledge and IWRM tools to support river basin planning and management being used effectively.</b>			-	-	-	-
<b>Output 2.1 : Databases and base maps of the river basins</b>			-	-	-	-
Activity 2.1.1 Identify purposes of use of data and maps according to collected data, quality, and assurance.	Thailand		-	-	-	-
Milestone 2.1.1.1 WG capacitated in use data and map (Q2 2015)			-	-	-	-
Task 1. Workshop to identify data and maps in project area.		TBWG				
Task 2. Data collection and maps preparation.		Sub district WG, TBWG				
Activity 2.1.2 Workshop for data analysis.	Thailand		-	-	-	-

Total for Thailand	Country	Implementers	2014			
			Q1	Q2	Q3	Q4
Milestone 2.1.2.1 Workshop organised for RBC/RBP/WG and focal point (Q2 2015)			-	-	-	-
Task 1. Workshop for data selection related to IWRM Project		TBWG				
Task 2. Workshop for data analysis		TBWG				
Activity 2.1.3 Build databases and base maps	Thailand		-	-	-	-
Milestone 2.1.3.1 Database and base maps completed (Q4 2015)			-	-	-	-
Task 1. Prepare database and base map support selected tools		TBWG				
Task 2. Database and base map quality assurance		TBWG				
Activity 2.1.4 Develop a road map to update, maintain and improve database for the future strategies to develop sub-district/villages levels.	Thailand		-	-	-	-
Milestone 2.1.4.1 Database Management Plan developed (Q2 2016)			-	-	-	-
Task 1. TBWG Consultation meeting to develop database management plan						
Task 2. Update database in 15 sub-districts						

Total for Thailand	Country	Implementers	2014			
			Q1	Q2	Q3	Q4
Output 2.2 : State and trends of the river basins			-	-	-	-
Activity 2.2.1 Prepare concept note on the pilot areas.	Thailand		-	-	-	-
Milestone 2.2.1.1 Work plan and goal in pilot areas prepared (Q2 2015)			-	-	-	-
Task 1.Prepare work plan and goal in 15 sub-districts		sub-district WG,				
Task 2.Workshop to integrated work plan and goal		TBWG				
Milestone 2.2.1.2. Lesson learnt from pilot areas prepared (Q3 2016)			-	-	-	-
Task 1.Learning and sharing on data base and base map preparation as well as work plan in pilot areas		sub-district WG, TBWG				
Activity 2.2.2 Analyse data and issues to input to the report.	Thailand		-	-	-	-
Milestone 2.2.2.1 Draft report prepared (Q2 2015 and Q3 2016)			-	-	-	-
Task 1.Workshop to analyse data and issues during project implementation		TBWG				

Total for Thailand	Country	Implementers	2014			
			Q1	Q2	Q3	Q4
Output 2.3: Demonstration and application of relevant IWRM tools to support river basin planning and management			-	-	-	-
Activity 2.3.1 Identify relevant IWRM tools to support planning and management in the river basins (Pilot areas).	Thailand		-	-	-	-
Milestone 2.3.1.1 IWRM tools identified for each pilot area (Q3 2015)			-	-	-	-
Task 1. Workshop to identify appropriated tool for pilot areas		TBWG, representative from sub-district WG				
Activity 2.3.2 Train and demonstrate how to apply the identified IWRM tools.	Thailand		-	-	-	-
Milestone 2.3.2.1 Workshop organised for basin WG (Q3 2015 and Q2 2016)			-	-	-	-
Task 1. Training workshop on IWRM tools		representative from sub-district WG,				

Total for Thailand	Country	Implementers	2014			
			Q1	Q2	Q3	Q4
Task 2.Demonstrated IWRM tools in pilot areas		sub-district WG,				
Activity 2.3.3 Apply the identified IWRM tools to support preparation of IWRM based river basin management plans.	Thailand		-	-	-	-
Milestone 2.3.3.1 IWRM tools applied in River Basin and Pilot Areas (Quarterly from Q4 2015)			-	-	-	-
Task 1.Selected appropriate tools to implement in pilot areas		TBWG				
Task 2.Follow up implementation tools in pilot areas		representative from sub-district WG,TBWG				
Activity 2.3.4 Setting up learning areas for IWRM through demonstration.	Thailand		-	-	-	-
Milestone 2.3.4.1 Learning areas established in river basin and pilot areas (Q4 2016)			-	-	-	-
Task 1.Set up criteria to select learning areas		TBWG				

Total for Thailand	Country	Implementers	2014			
			Q1	Q2	Q3	Q4
Task 2.Consultation for learning areas selection		representative from sub-district WG,TBW G				
Task 3.Exchange knowledge from learning area with other river basin		River basin network				
Output 2.4 : IWRM-based river basin management plans and action plans focused on integrated wetland and flood management and sustainable irrigation development			-	-	-	-
Activity 2.4.1. Update environmental and eco-social data and information on the development of the Basin relevant IWRM tools.	Thailand		-	-	-	-
Milestone 2.4.1.1 Database updated (Q2 2015)			-	-	-	-
Task 1.Review and update database						
Activity 2.4.2 Identify and prepare management action plans for integrated wetland, irrigation and flood managements in the sustainable development.	Thailand		-	-	-	-

Total for Thailand	Country	Implementers	2014			
			Q1	Q2	Q3	Q4
Milestone 2.4.2.1 Work plan for pilot area Implemented (T) (Q2 2016)			-	-	-	-
Task 1.Prepare work plan in pilot area		representative from sub-district WG,TBWG				
Task 2.Project implement in pilot area following agreed work plan		sub-district WG,TBWG				
Milestone 2.4.2.2 Management and development plan prepared (L) (Q2 2016)			-	-	-	-
Activity 2.4.3 Widely consult with relevant stakeholders on the river Basin Management and development.	Thailand		-	-	-	-
Milestone 2.4.3.1 Workshop held with all stakeholders (Q1 2015)			-	-	-	-
Task 1.TBWG preparation meeting		TBWG				



Total for Thailand	Country	Implementers	2014			
			Q1	Q2	Q3	Q4
Task 2.Organize workshop with wildly stakeholder in Nam Kam River basin		TBWG, stakeholder				
Task 3.TBWG to summarize workshop outputs		TBWG				
Activity 2.4.4 Spawning of conservation areas.	Thailand		-	-	-	-
Milestone 2.4.4.1 Conservation areas suitable for spawning selected (Q4 2014)			-	-	-	-
Task 1.Organize workshop with stakeholder for site selection		representative from sub-district WG,TBWG, stakeholder				
Task 2.Data collection in conservation areas and spawning areas		representative from sub-district WG,TBWG				

Total for Thailand	Country	Implementers	2014			
			Q1	Q2	Q3	Q4
Task 3.Community agreement of parents stock conservation area		representative from sub-district WG,TBW G, stakeholder				
Task 4.Lessen learnt from conservation area		representative from sub-district WG,TBW G				
Milestone 2.4.4.2 Capacity building for local population (Q4 2015)			-	-	-	-
Task 1.Training to create awareness for community		representative from sub-district WG,TBW G, stakeholder				
Task 2.Training for the local facilitators		Selected persons				

Total for Thailand	Country	Implementers	2014			
			Q1	Q2	Q3	Q4
<b>Outcome 3: Strengthened cooperation and effective transboundary project implementation and management</b>			-	2,900	1,300	6,000
<b>Output 3.1: Project implementation and management structures established</b>			-	2,000	1,300	-
Activity 3.1.1. Design and agree on project implementation and management structures and working principles (Project Internal regulation).	Thailand		-	2,000	-	-
Milestone 3.1.1.1 Project management plan developed and agreed (Q2 2014)			-	2,000	-	-
Task 1. TBWG consultation between two countries		TBWG		1,500		
Task 2. Draft management plan		TBWG		500		
Activity 3.1.2 Review and improve existing and future mechanisms for effective National and Transboundary coordination and management	Thailand		-	-	1,300	-
Milestone 3.1.2.1 Mechanisms of line of communication and coordination in the basin agreed (Q3 2014)			-	-	1,300	-
Task 1. Review existing mechanisms in national and transboundary coordination		TBWG			500	
Task 2. Improve mechanism of line of communication and coordination		TBWG			500	
Task 3. Agreed on mechanism of line of communication and coordination		TBWG			300	

Total for Thailand	Country	Implementers	2014			
			Q1	Q2	Q3	Q4
Output 3.2 : Data and information shared, experiences and lessons exchanged and MRC PDIES Procedure applied			-	900	-	2,700
Activity 3.2.1 Apply principles of MRC-Procedures for Data and Information Exchange and Sharing (PDIES) between both river basins	Thailand		-	-	-	-
Milestone 3.2.1.1 Data sharing procedures and types of data agreed (Q3 2015)			-	-	-	-
Task 1.Workshop to make understanding on PDIES		representative from sub-district WG,TBW G, stakeholder				
Task 2.Selected data and information in river basin related to PDIES		representative from sub-district WG,TBW G, stakeholder				
Milestone 3.2.1.2 Data shared on regular basis (quarterly from Q4 2015)			-	-	-	-

Total for Thailand	Country	Implementers	2014			
			Q1	Q2	Q3	Q4
Task 1. Learn together to share selected data and information		representative from sub-district WG, TBWG, stakeholder				
Task 2. Follow up progress of data and information sharing		TBWG				
Activity 3.2.2 Local Data Management workshops/meetings to share experiences and lesson for internal basins	Thailand		-	-	-	-
Milestone 3.2.2.1 Experiences exchanged between sub-river basins (Q1 2015 and Q2 2016)			-	-	-	-
Task 1. Exchange among sub-river basins in Nam Kam River Basin		TBWG				
Task 2. Exchange among pilot areas		TBWG				
Activity 3.2.3 Joint Data Management workshops/meetings to exchange experiences and lesson for both basins.	Thailand		-	-	-	-
Milestone 3.2.3.1 Experiences exchanged between river basins (Q2 2015)			-	-	-	-

Total for Thailand	Country	Implementers	2014			
			Q1	Q2	Q3	Q4
Task 1.Workshop to exchange experiences between two countries		TBWG				
Activity 3.2.4 Transboundary field visits between both river basins	Thailand		-	-	-	1,800
Milestone 3.2.4.1 Field Visit to river basin completed (Q4 2014, Q3 2015, Q3 2016)			-	-	-	1,800
Task 1.Selected site visit for exchange experiences between two countries		TBWG				300
Task 2.Site visit for exchange experiences between two countries		TBWG				1,500
Activity 3.2.5 Transboundary field visits to other basins.	Thailand		-	-	-	-
Milestone 3.2.5.1 Field visit to external basin completed (Q4 2015)			-	-	-	-
Task 1.Selected transboundary field visit to other basins		TBWG				
Task 2.Field visit to other basins		TBWG				
Activity 3.2.6 National Consultation Workshop on progress of the project implementation	Thailand		-	900	-	900

Total for Thailand	Country	Implementers	2014			
			Q1	Q2	Q3	Q4
Milestone 3.2.6.1 Bi-annual Workshop completed (Q2 2014 to Q4 2016)			-	900	-	900
Task 1.TBWG consultation		TBWG		300		300
Task 2.Organize bi-annual workshop		TBWG		600		600
Output 3.3 : Effective transboundary project implementation and management			-	-	-	3,300
Activity 3.3.1 Joint Transboundary Annual Reflection Workshop.	Thailand		-	-	-	1,500
Milestone 3.3.1.1 Joint TB workshop held (Q4 every year)			-	-	-	1,500
Task 1.TBWG consultation		TBWG				300
Task 2.Organize join TB workshop		TBWG				1,200
Activity 3.3.2 Joint Transboundary Project Evaluation.	Thailand		-	-	-	1,800
Milestone 3.3.2.1 Joint Evaluation Report prepared (Q4 2015, Q4 2016)			-	-	-	1,800
Task 1.TBWG consultation		TBWG				1,800
Activity 3.3.3 Joint Transboundary consultation meeting for management level.	Thailand		-	-	-	-

Total for Thailand	Country	Implementers	2014			
			Q1	Q2	Q3	Q4
Milestone 3.3.3.1 Meeting organised for senior management (Q3 2015, Q3 2016)			-	-	-	-
Task 1.Organize TB meeting for senior management		TBWG				
<b>Programme Management</b>			<b>900</b>	<b>900</b>	<b>900</b>	<b>900</b>
Xebanghieng-Namkam Activities well managed			900	900	900	900
Activity 4.1.1 Strengthen administrative management	Thailand		700	700	700	700
Milestone 4.1.1.1 Financial Management procedures agreed (Q2 2014)			700	700	700	700
Task 1.Project management day to day work		TBWG	700	700	700	700
Activity 4.1.2 Conduct the Project Monitoring and evaluation. Quarterly Activities Progress Reports; Six Monthly Outputs Progress Report; Annual Outcome Progress Report; Internal Reports (Baseline and Completion reports);	Thailand		200	200	200	200
Milestone 4.1.2.1 Progress Reports submitted (very quarter)			200	200	200	200
Task 1.Prepare and submit reports at the end of every quarter		TBWG	200	200	200	200



Total for Thailand	Country	Implementers	2014			
			Q1	Q2	Q3	Q4
Project documentation			-	-	-	-
Activity 4.2.1 Media publication.	Thailand		-	-	-	-
Milestone 4.2.1.1 Final Report submitted (Q4 2016)			-	-	-	-
Task 1.Prepare and submit report at the end of the project		TBWG				
Total for Thailand NMC						
Total for Lao PDR NMC						

**Annex 5) Detailed Activities / Milestones / Tasks & Budget planning for first year (2014, Lao PDR)**

Total for Lao PDR	Country	Implementers	2014			
			Q1	Q2	Q3	Q4
			10,700	23,200	13,700	11,200
<b>Outcome 1 : RBCs/RBPs and working groups applying IWRM principles and preparing IWRM-based river basin management plans</b>			10,000	11,000	6,000	4,500
Output 1.1 : RBCs/RBPs and Working Groups established.			10,000	11,000	6,000	-
Activity 1.1.1 Establish an initial River Basin Platform (RBP) and working group in the basin.	Lao PDR		5,000	8,000	-	-
Milestone 1.1.1.1 TOR of working group developed and members of working group selected and officially approved by relevant authorities. (Q1 2014)			5,000	-	-	-
Task 1.1.1.1 Consult with provincial and district officers to draft TOR of WG, select WG members and having it officially approved by high provincial authority.	Laos	project team(PT) relevant provincial and district officer	5,000			

Total for Lao PDR	Country	Implementers	2014			
			Q1	Q2	Q3	Q4
Milestone 1.1.1.2 Workshop organized for members of WG to understand its TOR and assign responsibilities among its members. (Q2 2014)			-	5,000	-	-
Task 1.1.1.2 Workshop held at project site between project members and WG members to explain the TOR, setup its management structure and assign responsibility among its members	Laos	PT, WG and relevant pro. And dist. Officers		5,000		
Milestone 1.1.1.3 Workshop organized for WG to understand the project, its objectives and expected outputs. (Q2 2014)			-	3,000	-	-
Task 1.1.1.3: Workshop held at project site for WG to understand about the project: its objectives, work plan and expected outputs	Laos	WG, PT and focal points		3,000		

Total for Lao PDR	Country	Implementers	2014			
			Q1	Q2	Q3	Q4
Activity 1.1.2. Analyze lessons learned from the process of formulation, implementation, and management of existing RBCs/RBPs in the Basin to improve IWRM working principles to put in practice.	Lao PDR		-	-	3,000	-
Milestone 1.1.2.1 WG lessons learnt published (Q3 2014)			-	-	3,000	-
Task 1.1.2.1 Working w/ Nam Ngum and Nam Thurn/Nam Kading RBC Vientiane and Khammuan provinces, DWR, LNMCS and relevant LAs to find out their reason learnt, their structure, work plan, their achievements and produce a report.	Laos	Nam Ngum, Nam Thurn/Nam Kading RBC, DWR, LNMCS , relevant LAs			3,000	
Activity 1.1.3: Identify objective, scope, roles and responsibilities of relevant working groups to fit the Basin conditions.	Lao PDR		-	-	3,000	-
Milestone 1.1.3.1 Issues Identified (Q3 2014)			-	-	1,500	-
Task 1.1.3.1 With reasons learnt and basin conditions develop the objectives, scope roles and responsibilities of WG	Laos	WG, PT			1,500	

Total for Lao PDR	Country	Implementers	2014			
			Q1	Q2	Q3	Q4
Milestone 1.1.3.2 TOR and Action Plan for WGs developed (Q3 2014)			-	-	1,500	-
Task 1.1.3.2 Project team together with WG develop action plan for implementation	Laos	WG and PT			1,500	
Activity 1.1.4: Establish RBCs/RBP and working groups Meeting	Lao PDR		2,000	-	-	-
Milestone 1.1.4.1 Minutes of Meetings submitted. Every quarter after 2014			2,000	-	-	-
Task 1.1.4.1 with data and information submitted by WG, the project team write quarterly report to MRCS after 2014	Laos	WG, LNMCS, project team	2,000			

Total for Lao PDR	Country	Implementers	2014			
			Q1	Q2	Q3	Q4
Activity: 1.1.5 Establish management committee/Working group for Sub-district/District levels.	Lao PDR		3,000	3,000	-	-
Milestone 1.1.5.1.Sub-level water committee established (Q1 2014)			3,000	-	-	-
Task 1.1.5.1 set up water committee in the basin to supervise the works of WG, the committee composed of provincial and district officer with technical assistance from MONRE	Laos	Province , district officers and MONRE	3,000			
Milestone 2. Sub-level/area Work Group established (Q2 2014)			-	3,000	-	-
Task 1.1.5.2 set up sup-WG composed of provincial and district officers to carry out the actual as in the work plan	Laos	Province, districts officers, PT		3,000		

Total for Lao PDR	Country	Implementers	2014			
			Q1	Q2	Q3	Q4
Output 1.2 : Capacity needs identified and capacity built.			-	-	-	3,000
Activity 1.2.1: Gap analysis and identify capacity needs of RBCs/RBP and working groups in both countries focused on IWRM-based river basin planning and transboundary cooperation issues including wetland management, flood management and irrigation development.	Lao PDR		-	-	-	3,000
Milestone 1.2.1.1 Capacity Needs Assessment completed of RBC/RBP/WG (Q4 2014)			-	-	-	1,500
Task 1.2.1.1 Project team Meeting with WG, RBP and RBC to find out the capacity needs on IWRM knowledge of development and management of the basin (wetland management, flood management and irrigation development)	Laos	PT, WG, RBC, RBP and relevant pro. and dist. Officers				1,500
Milestone 1.2.1.2 Gap Analysis and Capacity Needed reported (Q4 2014)			-	-	-	1,500
Task 1.2.1.2 Writing a report on gap analysis and capacity needs of the WG, RBP and RBC in the basin by project team	Laos	WG and PT				1,500

Total for Lao PDR	Country	Implementers	2014			
			Q1	Q2	Q3	Q4
Activity 1.2.2. Prepare road map of action plan to implement capacity building in each river basin	Lao PDR		-	-	-	
Milestone 1.2.2.1 Work Plan in Pilot Areas prepared (Q4 2015)			-	-	-	-
Task 1.2.2.1 Based on capacity needs or gaps the WG and project team prepare the workplan to fill the capacity gaps.						
Milestone 1.2.2.2 Capacity Development Plan in Pilot Areas prepared (Q4 2015)			-	-	-	
Task 1.2.2.2 Detail plan for capacity gaps prepared, resource persons and training materials identified .						
Activity 1.2.3. Evaluate the previous capacity building and develop the future capacity building plan.	Lao PDR		-		-	-



Total for Lao PDR	Country	Implementers	2014			
			Q1	Q2	Q3	Q4
Milestone 1.2.3.1 Capacity Building Action Plan developed (Q2 2015)			-		-	-
Task 1.2.3.1 Training workshop prepared, participants identified and venue of workshop selected						
Activity 1.2.4 Link with related stakeholders to strengthen working group understanding of IWRM process to put it into real practices	Lao PDR		-	-	-	-
M:1.2.4.1 Workshop held for related stakeholders and WG (Q1 2015)				-	-	-
Task 1.2.4.1 Training workshop in action in project site						
Activity 1.2.5 Design the IWRM tools to apply at the local areas.	Lao PDR			-	-	-
Milestone 1.2.5.1 Selected Tools applied to Xe Bang Hieng / Nam Kam (Q1 2015)				-	-	-
Task 1.2.5.1 With the cooperation of MRCS, WG and project team select IWRM tools suitable to the basin conditions.						

Total for Lao PDR	Country	Implementers	2014			
			Q1	Q2	Q3	Q4
Output 1.3 : Enhancement of river basin networks and knowledge transferred to sub-basin level			-	-	-	1,500
Activity 1.3.1: Establish river basin networks at sub-basin level	Lao PDR		-	-	-	-
Milestone 1.3.1.1 Networks Established (Q2 2015)			-	-	-	-
Task 1.3.1.1 Identify stakeholders and build up line communication with them and sharing knowledge on IWRM and lesson learned						
Activity 1.3.2. Build a common understanding and integrated views and needs on river basin planning and management in each country.	Lao PDR		-	-	-	1,500
Milestone 1.3.2.1 Regular planning meetings held with network participation (Q4 2014 and Q1,Q2,Q3 2015)			-	-	-	1,500
Milestone 1.3.2.1 Regular planning meetings held with network participation (Q4 2014 and Q1,Q2,Q3 2015)	Laos	WG, PT, RBC, RBP, FP				1,500

Total for Lao PDR	Country	Implementers	2014			
			Q1	Q2	Q3	Q4
<b>Outcome 2: Knowledge and IWRM tools to support river basin planning and management being used effectively.</b>			-	-	-	1,500
<b>Output 2.1 : Databases and base maps of the river basins</b>			-	-	-	-
Activity 2.1.1 Identify purposes of use of data and maps according to collected data, quality, and assurance.	Lao PDR		-	-	-	-
Milestone 2.1.1.1 WG capacitated in use data and map (Q2 2015)			-	-	-	-
Task 2.1.1.1 workshop training for WG to understand IWRM tools (basin basic data, map, water law, rules and regulation on water and environment as well as MRC Procedures						
Activity 2.1.2 Workshop for data analysis.	Lao PDR		-	-	-	-
Milestone 2.1.2.1 Workshop organised for RBC/RBP/WG and focal point (Q2 2015)			-	-	-	-
Task 2.1.2.1 Joint workshop with RBC,WG and RBP and focal points to have common understanding on basin data, map rules and regulation on water and environment						

Total for Lao PDR	Country	Implementers	2014			
			Q1	Q2	Q3	Q4
Activity 2.1.3 Build databases and base maps	Lao PDR		-	-	-	-
Milestone 2.1.3.1 Database and base maps completed (Q4 2015)			-	-	-	-
Task 2.1.3.1 With agreed data and information and expert on GIS develop GIS map of the pilot area						
Activity 2.1.4 Develop a road map to update, maintain and improve database for the future strategies to develop sub-district/villages levels.	Lao PDR		-	-	-	-
Milestone 2.1.4.1 Database Management Plan developed (Q2 2016)			-	-	-	-
Task 2.1.4.1 Develop tables and templates for WG to collect data and information						

Total for Lao PDR	Country	Implementers	2014			
			Q1	Q2	Q3	Q4
Output 2.2 : State and trends of the river basins			-	-	-	-
Activity 2.2.1 Prepare concept note on the pilot areas.	Lao PDR		-	-	-	-
Milestone 2.2.1.1 Work plan and goal in pilot areas prepared (Q2 2015)			-	-	-	-
Task 2.2.1.1 workshop organized for WG to select pilot area with goals and objectives of the pilot area						
Milestone 2.2.1.2. Lesson learnt from pilot areas prepared (Q3 2016)			-	-	-	-
Task 2.2.1.2 Data and information collected by WG in the pilot area						
Activity 2.2.2 Analyse data and issues to input to the report.	Lao PDR		-	-	-	-
Milestone 2.2.2.1 Draft report prepared (Q2 2015 and Q3 2016)			-	-	-	-

Total for Lao PDR	Country	Implementers	2014			
			Q1	Q2	Q3	Q4
Task 2.2.2.1 Workshop with WG to analyse the data and information available in pilot area to prepare and outline the report						
<b>Output 2.3: Demonstration and application of relevant IWRM tools to support river basin planning and management</b>			-	-	-	-
Activity 2.3.1 Identify relevant IWRM tools to support planning and management in the river basins (Pilot areas).	Lao PDR		-	-	-	-
Milestone 2.3.1.1 IWRM tools identified for each pilot area (Q3 2015)			-	-	-	-
Milestone 2.3.1.1 IWRM tools identified for each pilot area (Q3 2015)						
Activity 2.3.2 Train and demonstrate how to apply the identified IWRM tools.	Lao PDR		-	-	-	-
Milestone 2.3.2.1 Workshop organised for basin WG (Q3 2015 and Q2 2016)			-	-	-	-

Total for Lao PDR	Country	Implementers	2014			
			Q1	Q2	Q3	Q4
Task 2.3.2.1 Workshop organized for all WG members and focal points to understand IWRM tools						
Activity 2.3.3 Apply the identified IWRM tools to support preparation of IWRM based river basin management plans.	Lao PDR		-	-	-	-
Milestone 2.3.3.1 IWRM tools applied in River Basin and Pilot Areas (Quarterly from Q4 2015)			-	-	-	-
Task 2.3.3.1 With selected IWRM tools, identify issues in the pilot area in the WG meeting						
Activity 2.3.4 Setting up learning areas for IWRM through demonstration.	Lao PDR		-	-	-	-
Milestone 2.3.4.1 Learning areas established in river basin and pilot areas (Q4 2016)			-	-	-	-
Task 2.3.4.1 workshops and meeting organized in the pilot area to demonstrate on IWRM-based basin management and development						

Total for Lao PDR	Country	Implementers	2014			
			Q1	Q2	Q3	Q4
Output 2.4 : IWRM-based river basin management plans and action plans focused on integrated wetland and flood management and sustainable irrigation development			-	-	-	1,500
Activity 2.4.1. Update environmental and eco-social data and information on the development of the Basin relevant IWRM tools.	Lao PDR		-	-	-	-
Milestone 2.4.1.1 Database updated (Q2 2015)			-	-	-	-
Task 2.4.1.1 data and information frequently collect for adapting data base of the pilot area.						
Activity 2.4.2 Identify and prepare management action plans for integrated wetland, irrigation and flood managements in the sustainable development.	Lao PDR		-	-	-	-
Milestone 2.4.2.1 Work plan for pilot area Implemented (T) (Q2 2016)			-	-	-	-



Total for Lao PDR	Country	Implementers	2014			
			Q1	Q2	Q3	Q4
Task 2.4.2.1 WG reviews all wetland, irrigation project and flood area in the pilot area for compliance with IWRM principle as agreed in the work plan.						
Milestone 2.4.2.2 Management and development plan prepared (L) (Q2 2016)			-	-	-	-
Task 2.4.2.2 with outcomes from the review, WG develop guidelines for management and development in the pilot area.						
Activity 2.4.3 Widely consult with relevant stakeholders on the river Basin Management and development.	Lao PDR		-	-	-	-
Milestone 2.4.3.1 Workshop held with all stakeholders (Q1 2015)			-	-	-	-
Task 2.4.3.1 Workshop organized in the pilot area for WG, RBC, RBP and relevant agencies on the guideline for basin development and management in the basin.						

Total for Lao PDR	Country	Implementers	2014			
			Q1	Q2	Q3	Q4
Activity 2.4.4 Spawning of conservation areas.	Lao PDR		-	-	-	1,500
Milestone 2.4.4.1 Conservation areas suitable for spawning selected (Q4 2014)			-	-	-	1,500
Task 2.4.4.1 Based on the guideline, WG select the spawning site to apply the guideline on fishery management.						1,500
Milestone 2.4.4.2 Capacity building for local population (Q4 2015)			-	-	-	-
Task 2.4.4.2 Training workshop organized for local people in the selected site to have their understanding on fishery conservation and management for their own benefit						

Total for Lao PDR	Country	Implementers	2014			
			Q1	Q2	Q3	Q4
<b>Outcome 3: Strengthened cooperation and effective transboundary project implementation and management</b>			-	9,500	7,000	4,500
Output 3.1: Project implementation and management structures established			-	8,000	7,000	-
Activity 3.1.1. Design and agree on project implementation and management structures and working principles (Project Internal regulation).	Lao PDR		-	8,000	-	-
Milestone 3.1.1.1 Project management plan developed and agreed (Q2 2014)			-	8,000	-	-
Task 3.1.1.1 WG in cooperation with relevant authorities of province, district, MONRE and project team, develop the basin management plan and submit to high authority for approval.				8,000		
Activity 3.1.2 Review and improve existing and future mechanisms for effective National and Transboundary coordination and management	Lao PDR		-	-	7,000	-
Milestone 3.1.2.1 Mechanisms of line of communication and coordination in the basin agreed (Q3 2014)			-	-	7,000	-
Task 3.1.2.1 Workshop organized to setup land agree on line of communication among relevant authorities of province, districts, WG and project team.					7,000	

Total for Lao PDR	Country	Implementers	2014			
			Q1	Q2	Q3	Q4
Output 3.2 : Data and information shared, experiences and lessons exchanged and MRC PDIES Procedure applied			-	1,500	-	2,000
Activity 3.2.1 Apply principles of MRC-Procedures for Data and Information Exchange and Sharing (PDIES) between both river basins	Lao PDR		-	-	-	-
Milestone 3.2.1.1 Data sharing procedures and types of data agreed (Q3 2015)			-	-	-	-
Task 3.2.1.1 Workshop with participation of RBCs, RBP, WG and focal points to agree on implementation of MRC Procedures and types of data and information for sharing						
Milestone 3.2.1.2 Data shared on regular basis (quarterly from Q4 2015)			-	-	-	-
Task 3.2.1.2 Publish agreed data and information for exchange and sharing with all stakeholders						

Total for Lao PDR	Country	Implementers	2014			
			Q1	Q2	Q3	Q4
Activity 3.2.2 Local Data Management workshops/meetings to share experiences and lesson for internal basins	Lao PDR		-	-	-	-
Milestone 3.2.2.1 Experiences exchanged between sub-river basins (Q1 2015 and Q2 2016)			-	-	-	-
Task 3.2.2.1 Workshop organized for all RBC, RBP and WG to share experience on data and information in their basin.						
Activity 3.2.3 Joint Data Management workshops/meetings to exchange experiences and lesson for both basins.	Lao PDR		-	-	-	-
Milestone 3.2.3.1 Experiences exchanged between river basins (Q2 2015)			-	-	-	-
Task 3.2.3.1						

Total for Lao PDR	Country	Implementers	2014			
			Q1	Q2	Q3	Q4
Activity 3.2.4 Transboundary field visits between both river basins	Lao PDR		-	-	-	2,000
Milestone 3.2.4.1 Field Visit to river basin completed (Q4 2014, Q3 2015, Q3 2016)			-	-	-	2,000
Task 3.2.4.1 Organized field visit to Nam Ngum RBC, Nam thurn RBC to exchange experience.						2,000
Activity 3.2.5 Transboundary field visits to other basins.	Lao PDR		-	-	-	-
Milestone 3.2.5.1 Field visit to external basin completed (Q4 2015)			-	-	-	-
Task 3.2.5.1 WG and project team to visit Nam Kam RBC in Sakonnakorn to exchange experience on implementation IWRM principles and guidelines						
Activity 3.2.6 National Consultation Workshop on progress of the project implementation	Lao PDR		-	1,500	-	-

Total for Lao PDR	Country	Implementers	2014			
			Q1	Q2	Q3	Q4
Milestone 3.2.6.1 Bi-annual Workshop completed (Q2 2014 to Q4 2016)			-	1,500	-	-
Task 3.2.6.1 Workshop organized in June 2014 and November 2014 with participation of RBCs, RBPs, WG and focal points to review all IWRM-based works done in the basin at project site.				1,500		
<b>Output 3.3 : Effective transboundary project implementation and management</b>			-	-	-	2,500
Activity 3.3.1 Joint Transboundary Annual Reflection Workshop.	Lao PDR		-	-	-	2,500
Milestone 3.3.1.1 Joint TB workshop held (Q4 every year)			-	-	-	2,500
Task 3.3.1.1 Study of trans-boundary issues and its impact by WG and project team presented in the workshop in November every year for RBC, RBP and focal points						2,500
Activity 3.3.2 Joint Transboundary Project Evaluation.	Lao PDR		-	-	-	-

Total for Lao PDR	Country	Implementers	2014			
			Q1	Q2	Q3	Q4
Milestone 3.3.2.1 Joint Evaluation Report prepared (Q4 2015, Q4 2016)			-	-	-	-
Task 3.3.2.1 Joint workshop of RBC, RBP, WG and focal point to assess the trans-boundary impacts.						
Activity 3.3.3 Joint Transboundary consultation meeting for management level.	Lao PDR		-	-	-	-
Milestone 3.3.3.1 Meeting organised for senior management (Q3 2015, Q3 2016)			-	-	-	-
Task 3.3.3.1 Outcomes from transboundary impact assessment presented to provincial, district and MONRE high authorities for their action.						
<b>Programme Management</b>			<b>700</b>	<b>2,700</b>	<b>700</b>	<b>700</b>
Xe Bang Hieng-Nam Kam Activities well managed			700	2,700	700	700
Activity 4.1.1 Strengthen administrative management	Lao PDR		-	2,000	-	-



Total for Lao PDR	Country	Implementers	2014			
			Q1	Q2	Q3	Q4
Milestone 4.1.1.1 Financial Management procedures agreed (Q2 2014)			-	2,000	-	-
Task 4.1.1.1 with assistance from MRCS, financial management procedure introduce to WG and project team in line with MRCS financial procedure.				2,000		
Activity 4.1.2 Conduct the Project Monitoring and evaluation. Quarterly Activities Progress Reports; Six Monthly Outputs Progress Report; Annual Outcome Progress Report; Internal Reports (Baseline and Completion reports);	Lao PDR		700	700	700	700
Milestone 4.1.2.1 Progress Reports submitted (very quarter)			700	700	700	700
Task 4.1.2.1 WG in cooperation with project team produce the completion report.			700	700	700	700
Project documentation			-	-	-	-
Activity 4.2.1 Media publication.	Lao PDR		-	-	-	-

Total for Lao PDR	Country	Implementers	2014			
			Q1	Q2	Q3	Q4
Milestone 4.2.1.1 Final Report submitted (Q4 2016)			-	-	-	-
Task 4.2.1.1 Workshop organized for WG, RBP, focal point to approve the completion report and submit to MRCS M-IWRM project.						